

WAAS CH <b>7773B</b> <b>W04B</b>	APP CRS <b>037°</b>	Rwy Idg <b>7864</b> TDZE <b>14</b> Apt Elev <b>19</b>
--	------------------------	---

# RNAV (GPS) RWY 4L

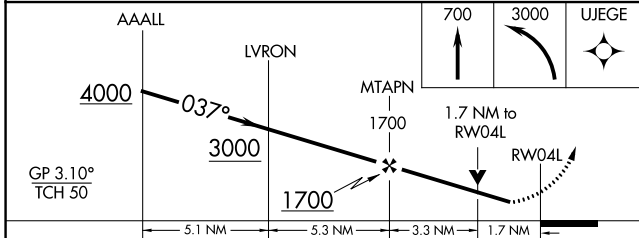
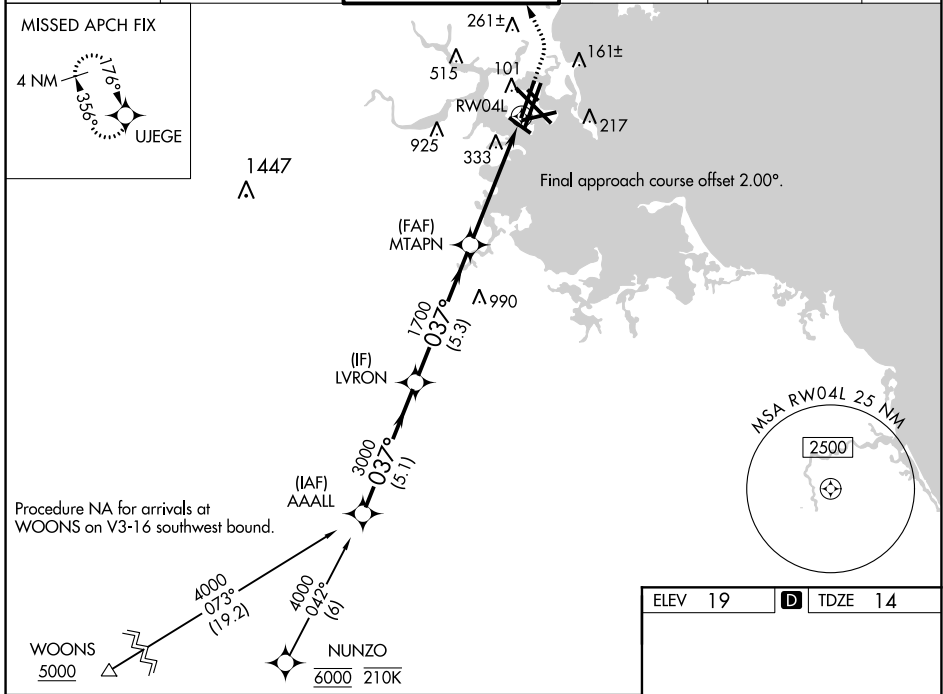
GENERAL EDWARD LAWRENCE LOGAN INTL (BOS)

RNP APCH - GPS.

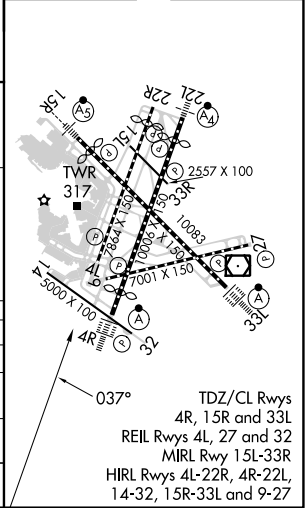
▼ For uncompensated Baro-VNAV systems, LNAV/VNAV NA below -14°C or above 54°C. Rwy 4L helicopter visibility reduction below RVR 4000 NA. When control tower reports tall vessels in approach area: increase LPV DA to 369 and all Cats visibility to RVR 5500. LPV and LNAV/VNAV NA when vessels taller than 137 feet present.

MISSED APPROACH: Climb to 700 then climbing left turn to 3000 direct UJEGE and hold, continue climb-in-hold to 3000.  
# Missed approach requires minimum climb of 425 feet per NM to 900.

D-ATIS <b>135.0</b>	BOSTON APP CON <b>120.6 263.1</b>	BOSTON TOWER <b>128.8 257.8 (WEST)</b> <b>132.225 257.8 (EAST)</b>	GND CON <b>121.75 121.9</b>	CLNC DEL <b>121.65 257.8</b>	CPDLC
------------------------	--------------------------------------	--	--------------------------------	---------------------------------	-------



ELEV 19	<b>D</b> TDZE 14
---------	------------------



CATEGORY	A	B	C	D
LPV DA		318/45	304 (300-7%)	
LNAV/VNAV DA#		680-17%	666 (700-17%)	
LNAV/VNAV DA		768-2	754 (800-2)	
LNAV MDA	600/55	586 (600-1)	600-1¾	586 (600-1¾)

NE-1, 13 JUN 2024 to 11 JUL 2024

NE-1, 13 JUN 2024 to 11 JUL 2024