

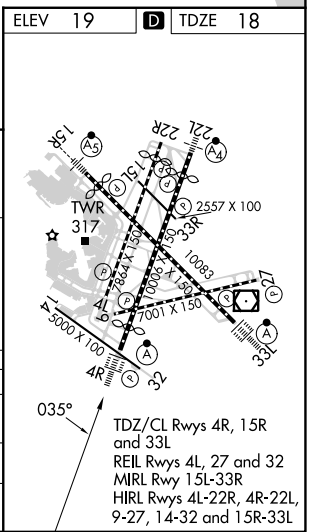
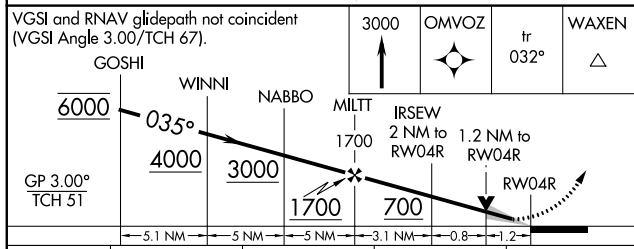
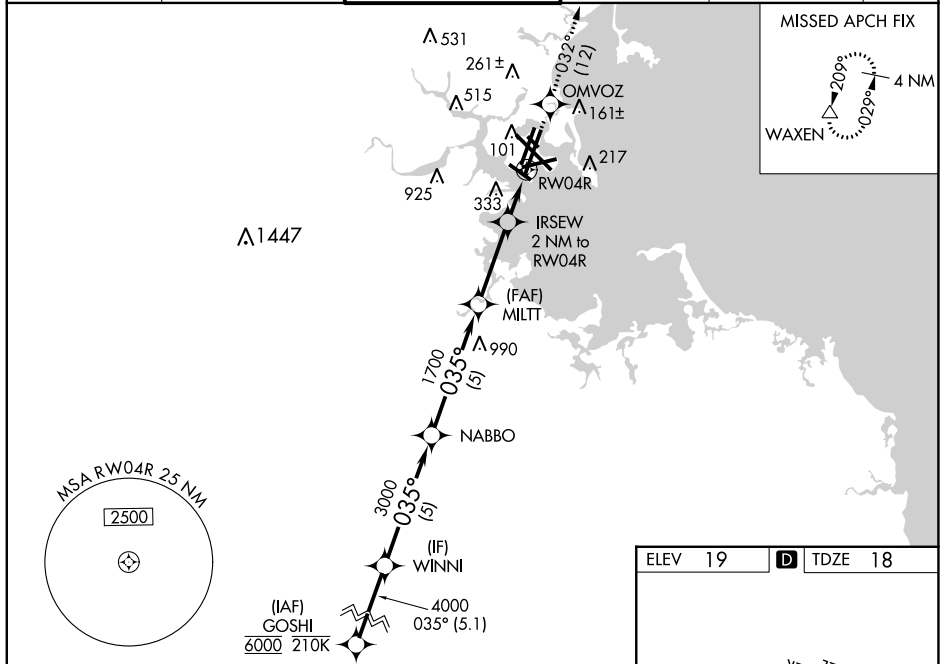
WAAS CH <b>50124</b> <b>W04A</b>	APP CRS <b>035°</b>	Rwy ldg <b>8851</b> TDZE <b>18</b> Apt Elev <b>19</b>
--	------------------------	---

# RNAV (GPS) RWY 4R

GENERAL EDWARD LAWRENCE LOGAN INTL (BOS)

RNP APCH - GPS.		<p>▼ For uncompensated Baro-VNAV systems, LNAV/VNAV NA below -16°C or above 54°C. For inop ALS increase LNAV/VNAV all Cats visibility to 1½ SM. When control tower reports tall vessels in approach area: increase LPV DA to 374 and all Cats visibility to RVR 4000, increase LNAV Cat A/B visibility to RVR 4000, for inop ALS with tall vessels increase LNAV/VNAV all Cats visibility to 1½ SM, LNAV Cat A/B visibility to RVR 5500 and LNAV Cat C/D to 1½ SM. For tall vessels Rwy 4R helicopter visibility reduction below RVR 4000 NA. When vessels taller than 144 feet present, LPV and LNAV/VNAV NA.</p>		<p>ALSF-2</p>		<p>MISSED APPROACH: Climb to 3000 direct OMVOZ and on track 032° to WAXEN and hold.</p>	
-----------------	--	--	--	---------------	--	---	--

D-ATIS <b>135.0</b>	BOSTON APP CON <b>120.6 263.1</b>	BOSTON TOWER <b>128.8 257.8 (WEST)</b> <b>132.225 257.8 (EAST)</b>	GND CON <b>121.75 121.9</b>	CLNC DEL <b>121.65 257.8</b>	CPDLC
------------------------	--------------------------------------	--	--------------------------------	---------------------------------	-------



CATEGORY	A	B	C	D
LPV DA	218/18		200 (200-½)	
LNAV/VNAV DA	514/50		496 (500-1)	
LNAV MDA	480/24 462 (500-½)		480/50 462 (500-1)	

NE-1, 13 JUN 2024 to 11 JUL 2024

NE-1, 13 JUN 2024 to 11 JUL 2024