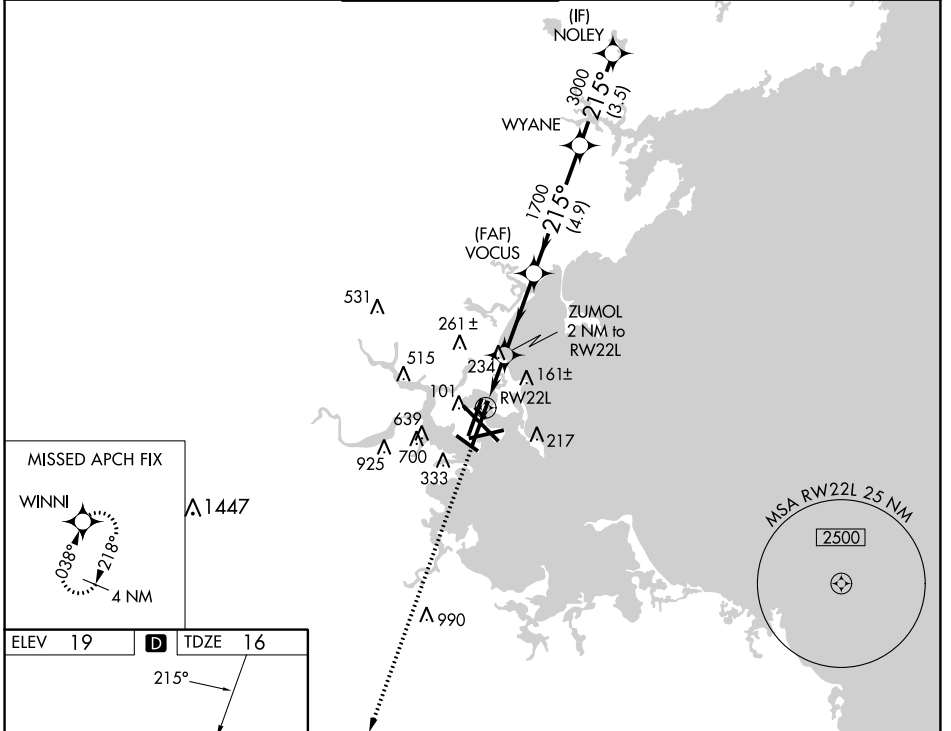


WAAS CH 45925 W22A	APP CRS 215°	Rwy Idg TDZE Apt Elev	8806 16 19
--	------------------------	-----------------------------	---------------------------------------

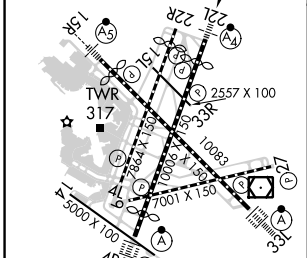
RNAV (GPS) X RWY 22L

GENERAL EDWARD LAWRENCE LOGAN INTL (BOS)

RNP APCH - GPS.					MALSF	MISSED APPROACH: Climb to 3000 direct WINNI and hold.
▼ For inop ALS, increase LNAV/VNAV Cat D visibility to RVR 6000 and LNAV Cat D visibility to 1½ SM. For uncompensated Baro-VNAV systems, LNAV/VNAV NA below -13°C or above 43°C.						
D-ATIS 135.0	BOSTON APP CON 120.6 263.1	BOSTON TOWER 128.8 257.8 (WEST) 132.225 257.8 (EAST)		GND CON 121.75 121.9	CNLC DEL 121.65 257.8	CPDLC



ELEV 19	D	TDZE 16
---------	----------	---------



3000	WINNI	VGSi and RNAV glidepath not coincident (VGSi Angle 3.00°/TCH 71).				
		ZUMOL 2 NM to RW22L	VOCUS 1700	WYANE 3000	NOLEY 4000	
		1.4 NM to RW22L	700	1700	GP 3.00° TCH 55	
		1.4 NM	0.6	3.1 NM	4.9 NM	3.5 NM

TDZ/CL Rwy 4R, 15R and 33L REIL Rwy 4L, 27 and 32 MIRL Rwy 15L-33R HIRL Rwy 4L-22R, 4R-22L, 9-27, 14-32 and 15R-33L	CATEGORY	A	B	C	D
	LPV DA		216/40	200 (200-¾)	
	LNAV/VNAV DA		408/50	392 (400-1)	
	LNAV MDA	540/40	524 (600-¾)	540-1¼	524 (600-1¼)

NE-1, 13 JUN 2024 to 11 JUL 2024

NE-1, 13 JUN 2024 to 11 JUL 2024