

APP CRS	Rwy Idg	<b>8994</b>
<b>303°</b>	TDZE	<b>4462</b>
	Apt Elev	<b>4473</b>

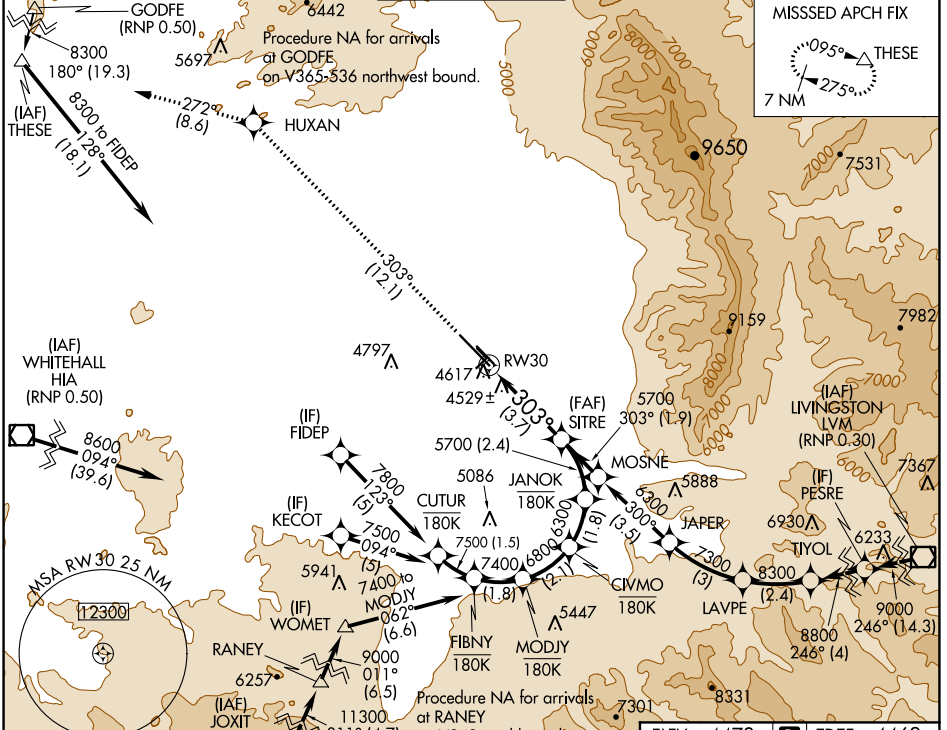
# RNAV (RNP) RWY 30

BOZEMAN YELLOWSTONE INTL (BZN)

**⚠** For uncompensated Baro-VNAV systems, procedure NA below -24°C (-11°F) or above 51°C (124°F). When VGSI inoperative, procedure NA at night. RF Required. GPS required. \*Missed approach requires minimum climb of 350 feet per NM to 6000.

**MISSED APPROACH:** Climb to 8300 on track 303° to HUXAN and on track 272° to THESE and hold, continue climb-in-hold to 8300.

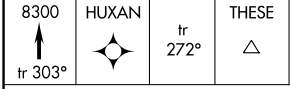
ATIS <b>135.425</b>	BIG SKY APP CON * <b>118.975 226.675</b>	BOZEMAN TOWER * <b>118.2 (CTAF) 0</b>	GND CON <b>121.8</b>	UNICOM <b>122.95</b>
------------------------	---	--	-------------------------	-------------------------



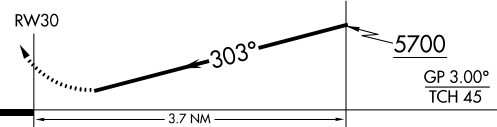
NW-1, 13 JUN 2024 to 11 JUL 2024

NW-1, 13 JUN 2024 to 11 JUL 2024

ELEV	<b>4473</b>	TDZE	<b>4462</b>
------	-------------	------	-------------



See planview for multiple IF locations.



CATEGORY	A	B	C	D
RNP 0.11* DA		4742-1	280 (300-1)	
RNP 0.20 DA		4824-1 ¼	362 (400-1 ¼)	
RNP 0.30 DA		4881-1 ½	419 (500-1 ½)	

## AUTHORIZATION REQUIRED

