

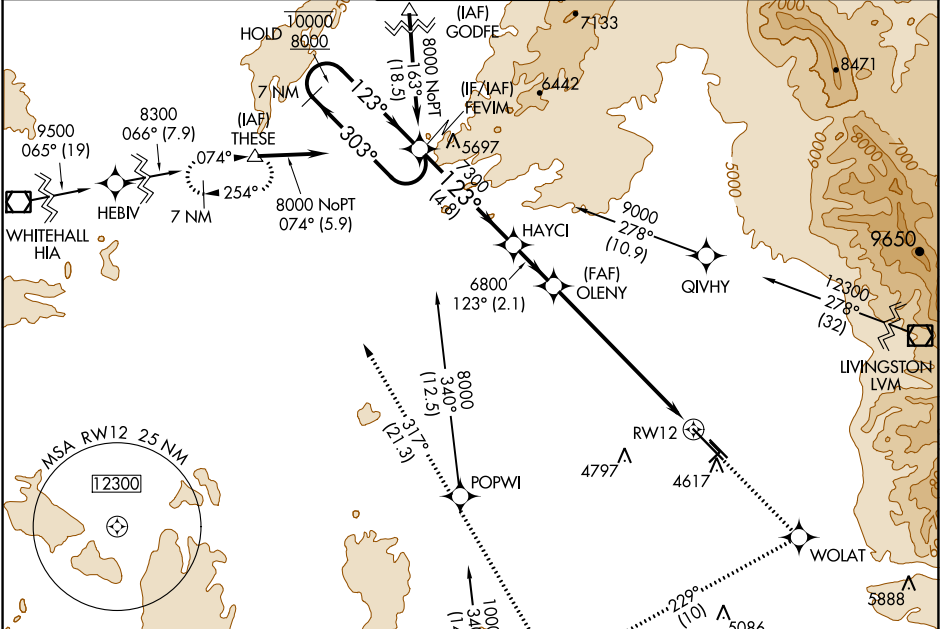
WAAS CH 72816 W12A	APP CRS 123°	Rwy Idg TDZE Apt Elev	8994 4443 4473
--	------------------------	-----------------------------	---

RNAV (GPS) Y RWY 12

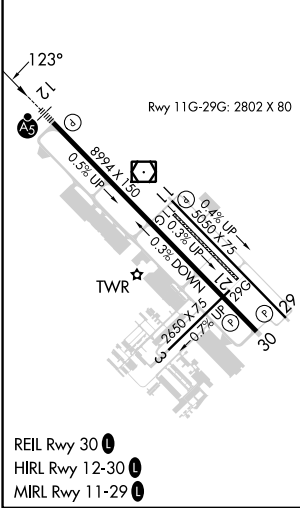
BOZEMAN YELLOWSTONE INTL (BZN)

RNP APCH.	MALSR	MISSED APPROACH: Climb to 8300 direct WOLAT and right turn on track 229° to CISED and on track 317° to THESE and hold.
<p>⚠ Circling NA to Rwys 3-21 and 11-29. For uncompensated Baro-VNAV systems, procedure NA below -23°C or above 49°C. For inop ALS, increase</p> <p>⚠ -31°C LNAV/VNAV visibility to 1½ SM and LNAV visibility Cats C and D to 1½ SM.</p>		

ATIS 135.425	BIG SKY APP CON* 118.975 226.675	BOZEMAN TOWER* 118.2 (CTAF) 0	GND CON 121.8	UNICOM 122.95
------------------------	--	---	-------------------------	-------------------------



ELEV 4473	D	TDZE 4443
-----------	---	-----------



	FEVIM	8300	WOLAT	CISED	THESE
	7 NM Holding Pattern	↑	✧	tr 229°	✧ tr 317°
	10000 ← 303°	HAYCI	OLENY	* LNAV only	
	8000 → 123°		6800	* 1.5 NM to RWY 12	
	GP 3.00°		6800	RWY 12	
	TCH 53	4.8 NM		2.1 NM	5.7 NM
				1.5-	
CATEGORY	A	B	C	D	
LPV DA		4693-½	250 (300-½)		
LNAV/VNAV DA		5094-1¾	651 (700-1¾)		
LNAV MDA	4960-½	517 (500-½)	4960-1	517 (500-1)	4960-1¼
ⓐ CIRCLING	4960-1	487 (500-1)	5160-2	687 (700-2)	5360-3
				887 (900-3)	

NW-1, 13 JUN 2024 to 11 JUL 2024

NW-1, 13 JUN 2024 to 11 JUL 2024