

BUFFALO, NEW YORK

AL-65 (FAA)

23110

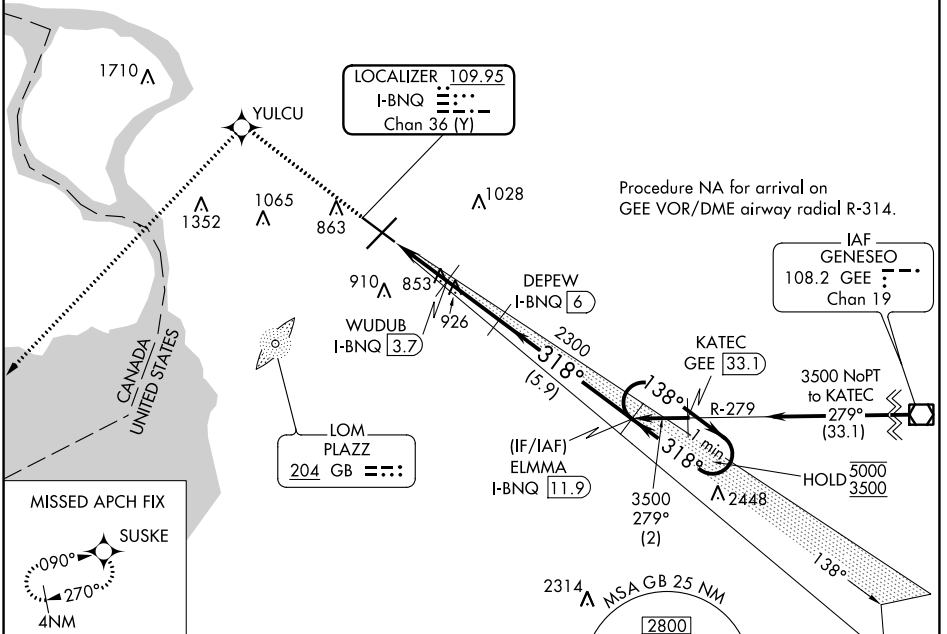
LOC/DME I-BNQ <b>109.95</b>	APP CRS <b>318°</b>	Rwy Idg TDZE Apt Elev	<b>6121</b> <b>713</b> <b>727</b>
Chan <b>36 (Y)</b>			

# ILS or LOC RWY 32

## BUFFALO NIAGARA INTL (BUF)

DME required. RNP APCH-GPS.			MALSR 	MISSED APPROACH: Climb to 3000 direct YULCU and on track 235° to SUSKE and hold.	
-----------------------------	--	--	-----------	--	--

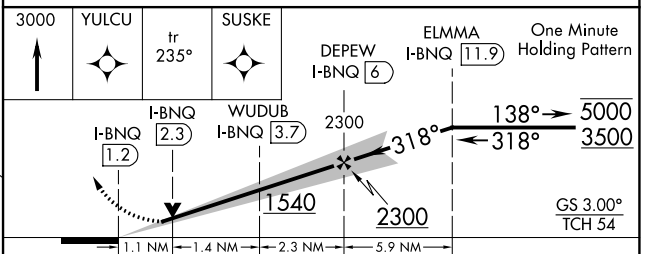
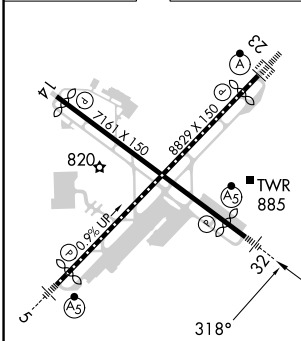
D-ATIS <b>135.35</b>	BUFFALO APP CON <b>126.15 263.125</b>	BUFFALO TOWER <b>120.5 257.8</b>	GND CON <b>133.2 257.8</b>	CLNC DEL <b>124.7 257.8</b>	CPDLC
-------------------------	--	-------------------------------------	-------------------------------	--------------------------------	-------



NE-2, 13 JUN 2024 to 11 JUL 2024

NE-2, 13 JUN 2024 to 11 JUL 2024

ELEV 727	<b>D</b>	TDZE 713
----------	----------	----------



CATEGORY	A	B	C	D
S-ILS 32	913-1/2 200 (200-1/2)			
S-LOC 32	1120-1/2 407 (400-1/2)	1120-3/4 407 (400-3/4)		
<b>C</b> CIRCLING	1200-1 473 (500-1)	1220-1 1/2 493 (500-1 1/2)	1340-2 613 (700-2)	

BUFFALO, NEW YORK  
Amdt 3 02DEC21

42°56'N-78°44'W

# BUFFALO NIAGARA INTL (BUF)

## ILS or LOC RWY 32