

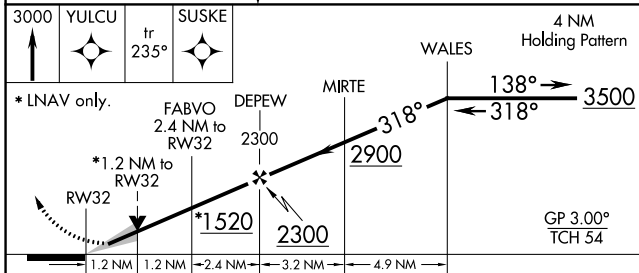
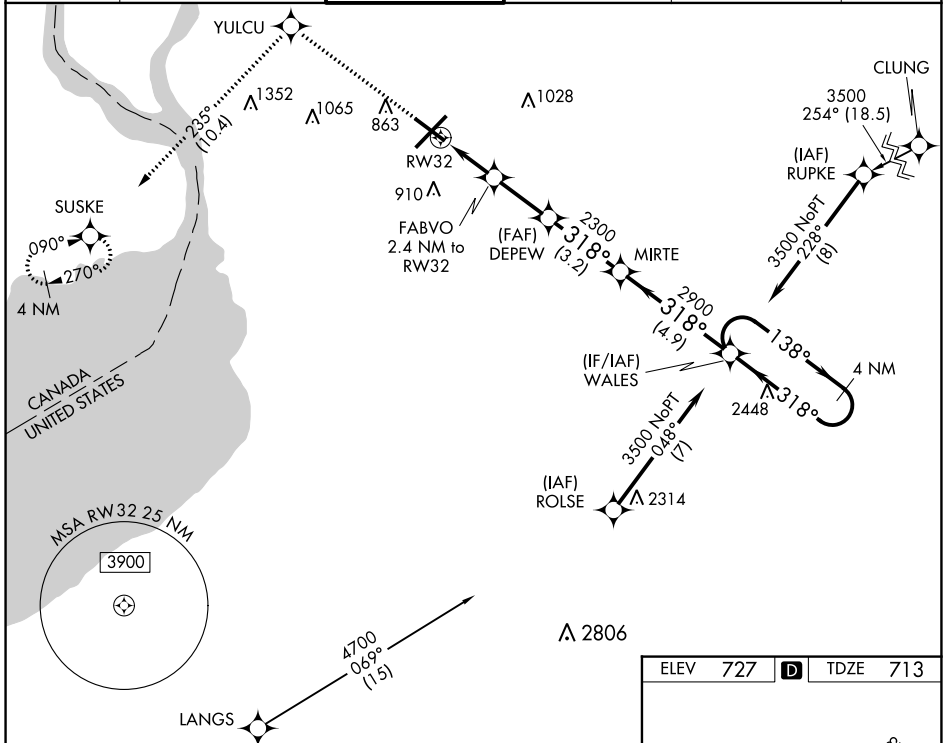
WAAS CH 81811 W32A	APP CRS 318°	Rwy Idg TDZE Apt Elev	6121 713 727
--	------------------------	-----------------------------	---

RNAV (GPS) RWY 32

BUFFALO NIAGARA INTL (BUF)

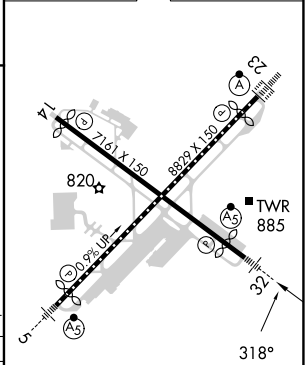
RNP APCH - GPS	MALSR	MISSED APPROACH: Climb to 3000 direct YULCU on track 235° to SUSKE and hold.
For uncompensated Baro-VNAV systems LNAV/VNAV NA below -17°C or above 54°C. For inop ALS, increase LNAV/VNAV visibility all Cats to 1 SM. Inop table does not apply to LPV all Cats.		

D-ATIS 135.35	BUFFALO APP CON 126.15 263.125	BUFFALO TOWER 120.5 257.8	GND CON 133.2 257.8	CLNC DEL 124.7 257.8	CPDLC
-------------------------	--	-------------------------------------	-------------------------------	--------------------------------	-------



CATEGORY	A	B	C	D
LPV DA		913-½	200 (200-½)	
LNAV/VNAV DA		1092-⅝	379 (400-⅝)	
LNAV MDA	1140-½ 427 (500-½)		1140-¾ 427 (500-¾)	
CIRCLING	1200-1 473 (500-1)		1220-1½ 493 (500-1½)	1340-2 613 (700-2)

ELEV 727	D TDZE 713
----------	-------------------



REIL Rwy 14
 TDZ/CL Rwys 5 and 23
 HIRL Rwys 5-23 and 14-32

NE-2, 13 JUN 2024 to 11 JUL 2024

NE-2, 13 JUN 2024 to 11 JUL 2024