

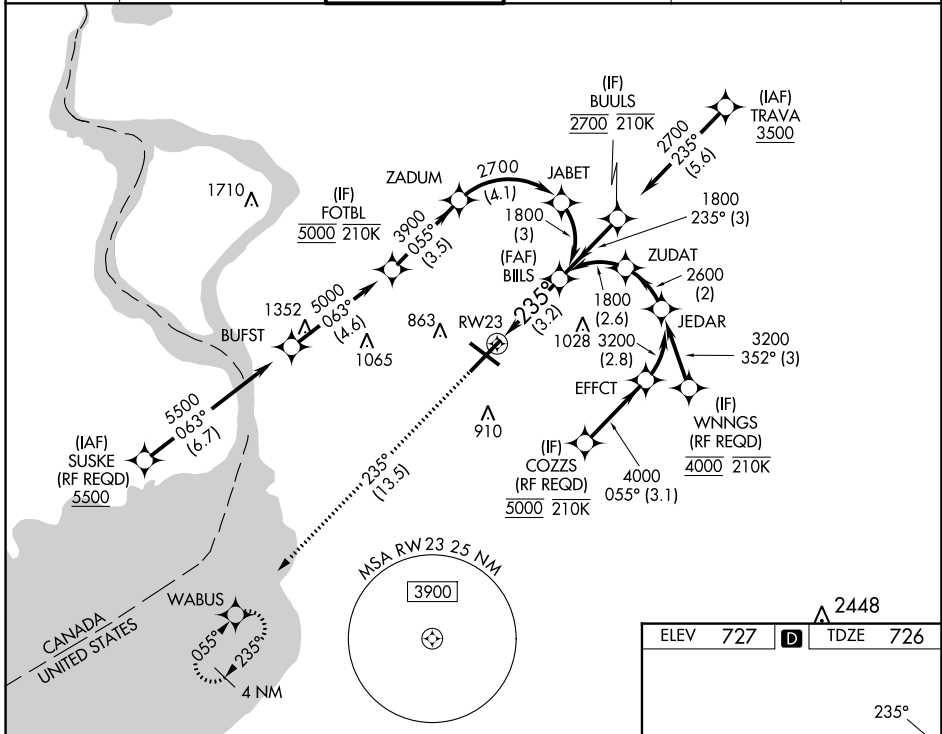
APP CRS	Rwy Idg	<b>7569</b>
<b>235°</b>	TDZE	<b>726</b>
	Apt Elev	<b>727</b>

# RNAV (RNP) Z RWY 23

BUFFALO NIAGARA INTL (BUF)

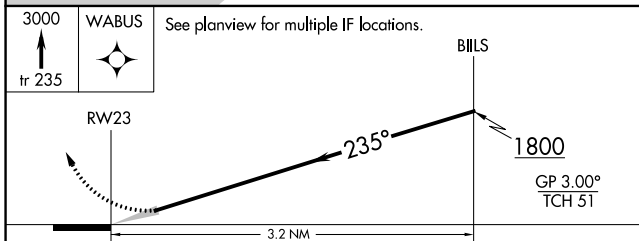
RNP AR APCH.	ALSF-2	MISSED APPROACH: Climb to 3000 on the RNAV missed approach route to WABUS and hold.
<p>▼ For uncompensated Baro-VNAV systems, procedure NA below -18°C or above 54°C. For inop ALSF, increase RNP 0.10 all Cats visibility to 1½. For inop ALSF, increase RNP 0.20 all Cats visibility to 1½. For inop ALSF, increase RNP 0.30 all Cats visibility to 1½.</p>		

D-ATIS	BUFFALO APP CON	BUFFALO TOWER	GND CON	CLNC DEL	CPDLC
<b>135.35</b>	<b>126.15 263.125</b>	<b>120.5 257.8</b>	<b>133.2 257.8</b>	<b>124.7 257.8</b>	



NE-2, 13 JUN 2024 to 11 JUL 2024

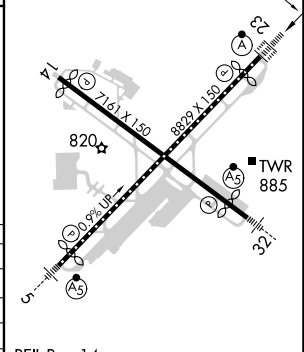
NE-2, 13 JUN 2024 to 11 JUL 2024



CATEGORY	A	B	C	D
RNP 0.10 DA		1114/45	388 (400-¾)	
RNP 0.20 DA		1170/55	444 (500-1)	
RNP 0.30 DA		1228-1¼	502 (600-1¼)	

**AUTHORIZATION REQUIRED**

ELEV	727	TDZE	726
------	-----	------	-----



REIL Rwy 14  
 TDZ/CL Rwys 5 and 23  
 HIRL Rwys 5-23 and 14-32