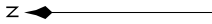
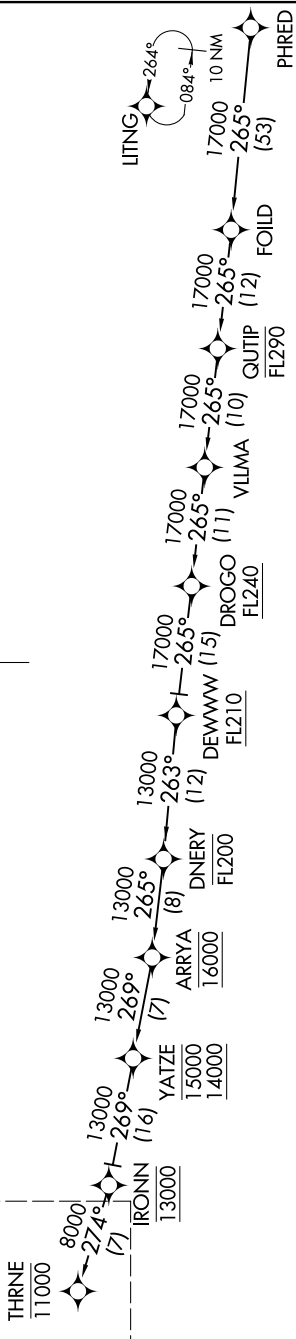


THRNE THREE ARRIVAL (RNAV) Transition Route AL-67 (FAA) BURBANK, CALIFORNIA

SOCAL APP CON
 126.7 370.95
 BUR D-ATIS
 134.5
 SMO ATIS
 119.15
 VNY ATIS
 127.55
 BURBANK TOWER
 118.7 254.3
 SANTA MONICA TOWER *
 120.1 257.8
 VAN NUYS TOWER *
 119.3 239.0



See following page
 for Arrival Routes.



- NOTE: RADAR required.
- NOTE: RNAV 1.
- NOTE: DME/DME/IRU or GPS required.
- NOTE: Turbojet and turboprop aircraft only.
- NOTE: Expect local area altimeter setting reaching FL200.

(CONTINUED ON FOLLOWING PAGE)

NOTE: Chart not to scale.

THRNE THREE ARRIVAL (RNAV) Transition Route BURBANK, CALIFORNIA