

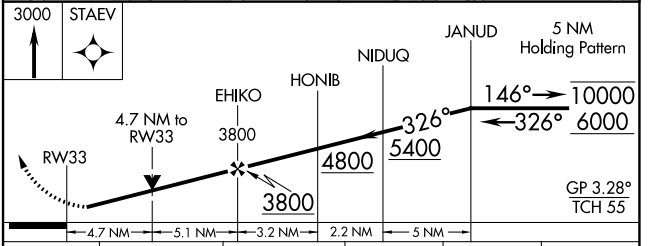
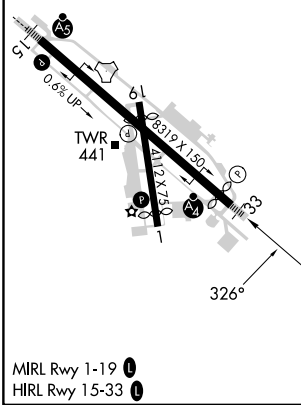
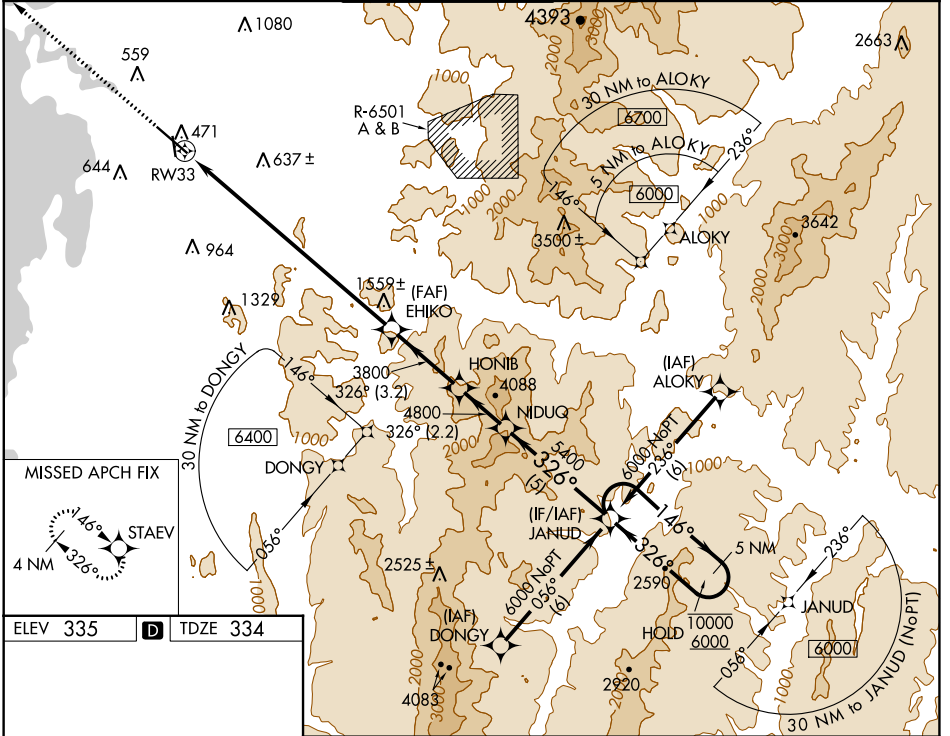
WAAS CH 65812 W33A	APP CRS 326°	Rwy Idg 7819 TDZE 334 Apt Elev 335
--	------------------------	---

RNAV (GPS) Z RWY 33

PATRICK LEAHY BURLINGTON INTL (BTV)

RNP APCH - GPS.		MALSF	MISSED APPROACH: Climb to 3000 direct STAEV and hold.	
<p>▼ Inop table does not apply. For uncompensated Baro-VNAV systems, LNAV/VNAV NA below -15°C or above 54°C.</p> <p>⚠ -10°C Rwy 33 helicopter visibility reduction below ¾ SM NA.</p>				

ATIS 123.8 269.9	BURLINGTON APP CON * 121.1 278.8	BURLINGTON TOWER * 118.3 (CTAF) 0 257.8	GND CON 126.3 348.6	CLNC DEL 119.15	UNICOM 122.95
----------------------------	--	---	-------------------------------	---------------------------	-------------------------



CATEGORY	A	B	C	D	E
LPV DA		584/40	250 (300-¾)		
LNAV/VNAV DA		1782-5	1448 (1500-5)		
LNAV MDA	2000-1¼	1666 (1700-1¼)		2000-3	1666 (1700-3)

NE-1, 13 JUN 2024 to 11 JUL 2024

NE-1, 13 JUN 2024 to 11 JUL 2024