

FTHLS SIX DEPARTURE (RNAV)

AL-74 (FAA)

PHOENIX-MESA GATEWAY (IWA)
PHOENIX, ARIZONA

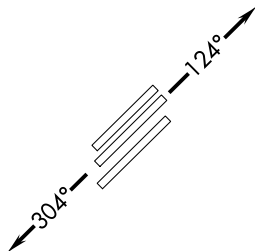
SW-4, 13 JUN 2024 to 11 JUL 2024

ATIS*
133.5 270.275
CLNC DEL
135.05
GND CON
128.25 275.8
GATEWAY TOWER*
120.6 289.4
PHOENIX DEP CON
124.9 353.8

NOTE: RNAV 1.
NOTE: Turbojets and turboprops only.
NOTE: RADAR required.
NOTE: GPS required.
NOTE: ABQ transition ATC assigned only.
NOTE: Aircraft filing over ACH, LBL, ONM, CNX, PNH, MMB, TCC, IRW and TXO file FTHLS DEPARTURE.
NOTE: Aircraft filing over ABQ, CIM, FTI, and GCK file LALUZ DEPARTURE.
NOTE: Aircraft filing over DEN, RSK, ALS, and points north of ALS file YOTES DEPARTURE.
NOTE: Aircraft departing KGEU and KGYR ATC assigned only.

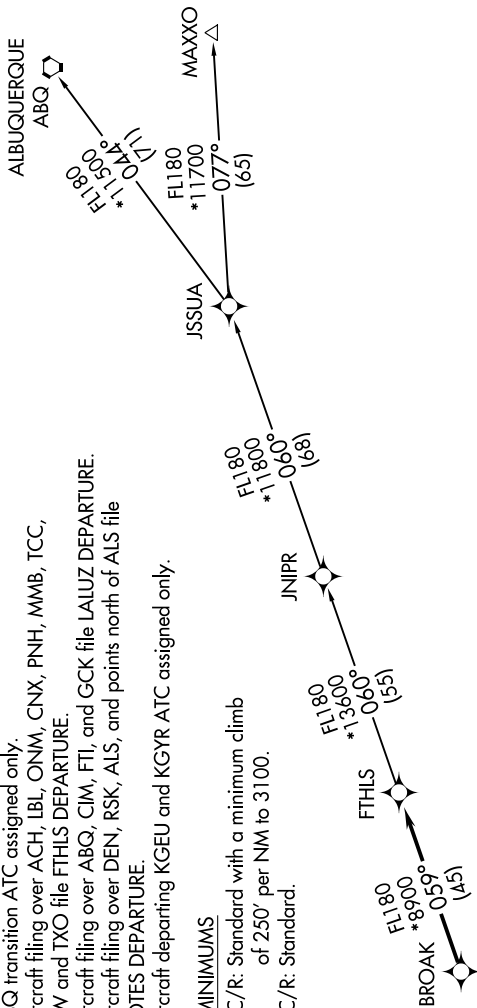
TAKEOFF MINIMUMS

Rwys 12L/C/R: Standard with a minimum climb of 250' per NM to 3100.
Rwys 30L/C/R: Standard.



NOTE: Chart not to scale.

TOP ALTITUDE: ASSIGNED BY ATC



DEPARTURE ROUTE DESCRIPTION

TAKEOFF RUNWAYS 12L/C/R: Climb heading 124° or as assigned by ATC. Thence. . . .
TAKEOFF RUNWAYS 30L/C/R: Climb heading 304° or as assigned by ATC. Thence. . . .

. . . .expect RADAR vectors to BROAK, then on track 059° to FTHLS, then on (transition).
Maintain ATC assigned altitude, expect filed altitude 3 minutes after departure.

ALBUQUERQUE TRANSITION (FTHLS6.ABQ)

JNIPR TRANSITION (FTHLS6.JNIPR)

MAXXO TRANSITION (FTHLS6.MAXXO)

FTHLS SIX DEPARTURE (RNAV)

(FTHLS6.FTHLS) 24MAY18

PHOENIX, ARIZONA
PHOENIX-MESA GATEWAY (IWA)

SW-4, 13 JUN 2024 to 11 JUL 2024