

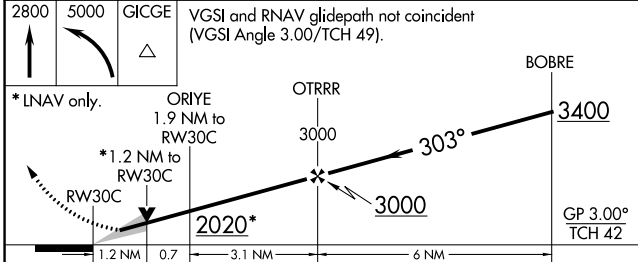
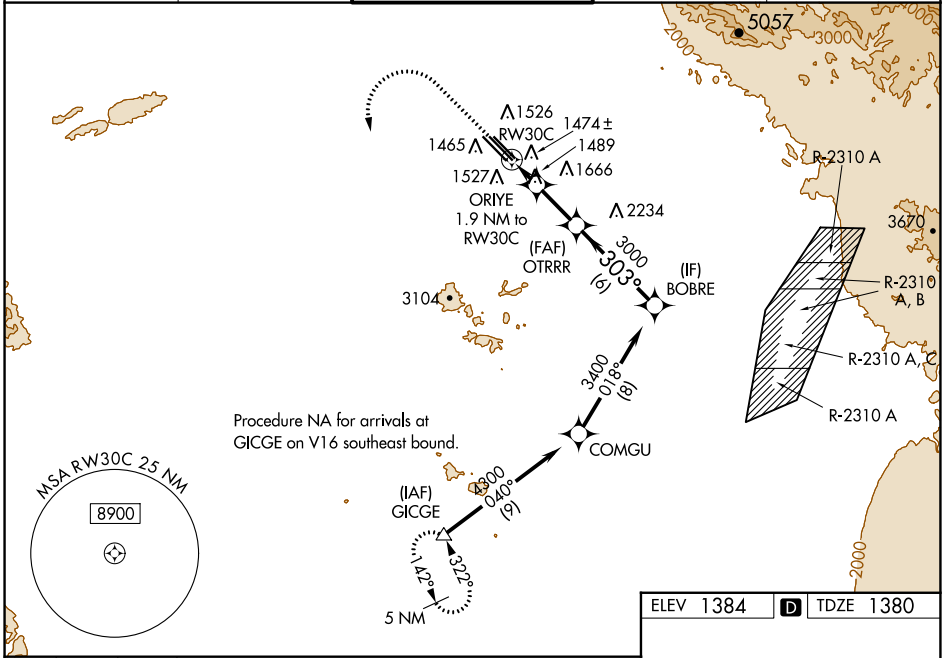
RNAV (GPS) Y RWY 30C

PHOENIX-MESA GATEWAY (IWA)

WAAS CH 62911 W30A	APP CRS 303°	Rwy ldg 10201 TDZE 1380 Apt Elev 1384
-------------------------------------	---------------------	--

<p>⚠ For uncompensated Baro-VNAV systems, LNAV/VNAV NA below -2°C (29°F) or above 35°C (95°F). DME/DME RNP-0.3 NA. When local altimeter setting not received, use Phoenix Sky Harbor Intl altimeter setting and increase LPV DA to 1660 feet, LNAV/VNAV DA to 1710 feet and all MDA 80 feet; increase LPV all Cats visibility 1/8 SM, increase LNAV/VNAV all Cats, LNAV Cats C, D and E, and Circling Cats D, E visibility 1/4 SM. VDP and Baro-VNAV NA with Phoenix Sky Harbor Intl altimeter setting.</p>	<p>MISSED APPROACH: Climb to 2800 then climbing left turn to 5000 direct GICGE and hold.</p>
--	---

ATIS* 133.5 270.275	PHOENIX APP CON 124.9 353.8	GATEWAY TOWER* 120.6 (CTAF) 289.4	GND CON 128.25 275.8	CLNC DEL 135.05
-------------------------------	---------------------------------------	---	--------------------------------	---------------------------



ELEV 1384	D TDZE 1380
-----------	--------------------

MIRL Rwy 12R-30L
HIRL Rwy 12L-30R and 12C-30C
REIL Rwy 12L and 30R

CATEGORY	A	B	C	D	E
LPV DA		1580-3/4	200 (200-3/4)		
LNAV/VNAV DA		1630-7/8	250 (300-7/8)		
LNAV MDA	1800-1 420 (500-1)		1800-1 1/8 420 (500-1 1/8)		
CIRCLING	1880-1 496 (500-1)		1880-1 1/2 496 (500-1 1/2)	2000-2 616 (700-2)	2040-2 1/4 656 (700-2 1/4)

SW-4, 13 JUN 2024 to 11 JUL 2024

SW-4, 13 JUN 2024 to 11 JUL 2024