

| | | | | |
|---------------------------------------|------------------------|----------|-------|------|
| VORTAC IWA 113.3 Chan 80 | APP CRS 302° | Rwy Idg | 30C | 30R |
| | | TDZE | 10201 | 9301 |
| | | | 1380 | 1382 |
| | | Apt Elev | 1384 | 1384 |

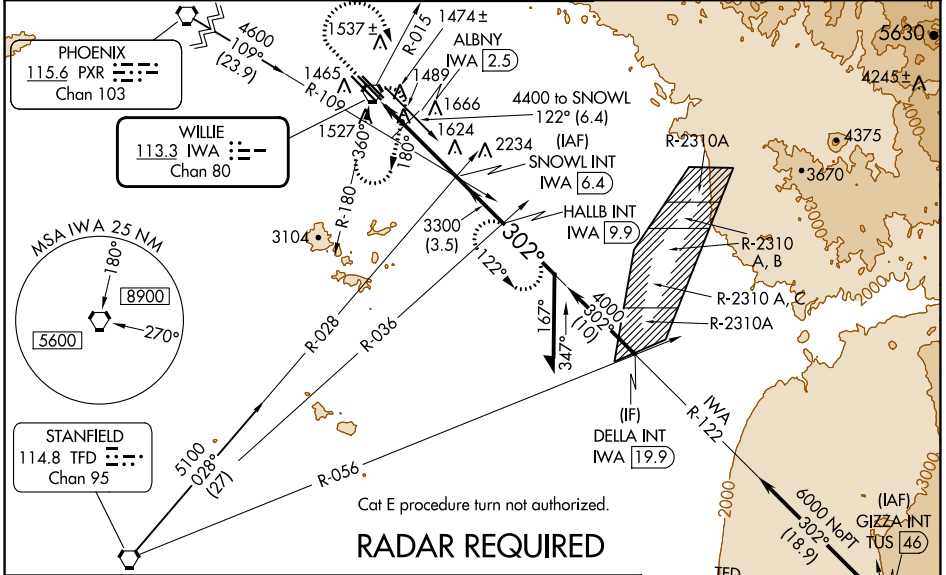
VOR or TACAN RWY 30C

PHOENIX-MESA GATEWAY (IWA)

⚠ When local altimeter setting not received, use Phoenix Sky Harbor Intl altimeter setting and increase all MDA 80 feet, increase S-30C, SIDESTEP 30R, and Circling Cats C/D/E visibility ¼ SM.

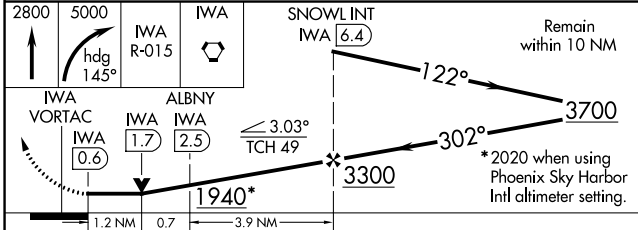
MISSED APPROACH: Climb to 2800 then climbing right turn to 5000 via heading 145° and IWA VORTAC R-015 to IWA VORTAC and hold, continue climb-in-hold to 5000 (TACAN aircraft continue via IWA VORTAC R-122 to HALLB INT/IWA 9.9 DME and hold, continue climb-in-hold to 5000, hold SE, LT, 302° inbound).

| | | | | |
|--------------------------------|---------------------------------------|--|--------------------------------|---------------------------|
| ATIS ★ 133.5 270.275 | PHOENIX APP CON 124.9 353.8 | GATEWAY TOWER ★ 120.6 (CTAF) 289.4 | GND CON 128.25 275.8 | CLNC DEL 135.05 |
|--------------------------------|---------------------------------------|--|--------------------------------|---------------------------|



Cat E procedure turn not authorized.

RADAR REQUIRED



| CATEGORY | A | | B | | C | D | E |
|--------------|--------|-------------|---------|--------------|---------|--------------|-------------|
| | 1 | 2 | 1 | 2 | | | |
| S-30C | 1940-1 | 560 (600-1) | 1940-1½ | 560 (600-1½) | 1940-1¾ | 560 (600-1¾) | 1940-2 |
| SIDESTEP 30R | 1940-1 | 558 (600-1) | 1940-1½ | 558 (600-1½) | 1940-2 | 558 (600-2) | 558 (600-2) |
| CIRCLING | 1940-1 | 556 (600-1) | 1940-1½ | 556 (600-1½) | 2000-2 | 616 (700-2) | 2020-2¼ |
| DME MINIMUMS | | | | | | | |
| S-30C | 1800-1 | 420 (500-1) | 1800-1¼ | 420 (500-1¼) | 1800-1½ | 420 (500-1½) | 1800-1½ |
| SIDESTEP 30R | 1800-1 | 418 (500-1) | 1800-1½ | 418 (500-1½) | 1800-2 | 418 (500-2) | 418 (500-2) |
| CIRCLING | 1880-1 | 496 (500-1) | 1880-1½ | 496 (500-1½) | 2000-2 | 616 (700-2) | 2020-2¼ |

