

(BANKR.BANKR5) 24137

BANKR FIVE ARRIVAL (RNAV)

AL-78 (FAA)

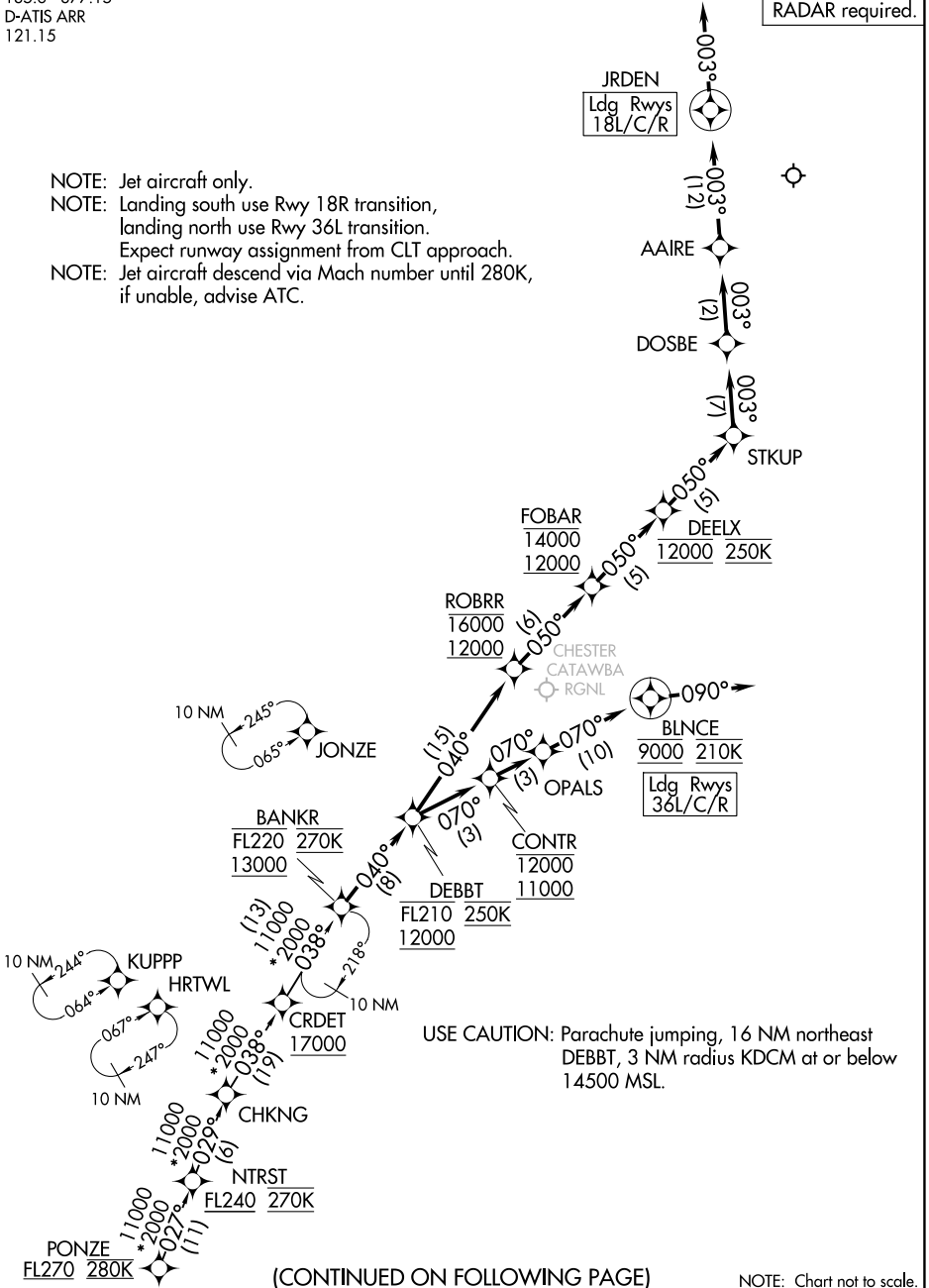
CHARLOTTE/DOUGLAS INTL (CLT)
CHARLOTTE, NORTH CAROLINA

CHARLOTTE APP CON
135.6 377.15
D-ATIS ARR
121.15

RNAV 1 - DME/DME/IRU or GPS.

RADAR required.

- NOTE: Jet aircraft only.
- NOTE: Landing south use Rwy 18R transition, landing north use Rwy 36L transition.
- NOTE: Expect runway assignment from CLT approach.
- NOTE: Jet aircraft descend via Mach number until 280K, if unable, advise ATC.



USE CAUTION: Parachute jumping, 16 NM northeast DEBBT, 3 NM radius KDCM at or below 14500 MSL.

(CONTINUED ON FOLLOWING PAGE)

NOTE: Chart not to scale.

BANKR FIVE ARRIVAL (RNAV)

(BANKR.BANKR5) 16MAY24

CHARLOTTE, NORTH CAROLINA
CHARLOTTE/DOUGLAS INTL (CLT)

SE-2, 13 JUN 2024 to 11 JUL 2024

SE-2, 13 JUN 2024 to 11 JUL 2024