

# ESTRR FIVE DEPARTURE (RNAV)

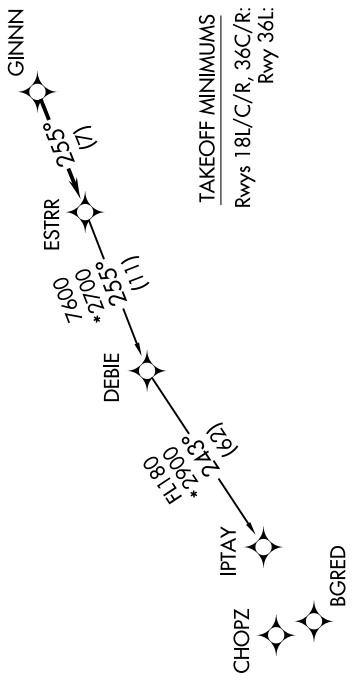
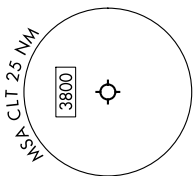
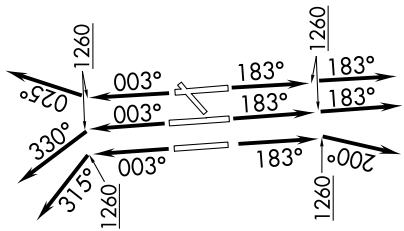
SE-2, 13 JUN 2024 to 11 JUL 2024

**TOP ALTITUDE:**  
8000

RNAV 1 - DME/DME/IRU or GPS.  
RADAR required.

CHARLOTTE DEP CON  
120.5 257.2  
D-ATIS DEP 132.1  
CLNC DEL  
127.15 348.6  
GND CON  
121.8 348.6 (WEST)  
121.9 348.6 (EAST)  
CHARLOTTE TOWER  
118.1 257.8 (Rwys 18L-36R)  
126.4 257.8 (Rwy 18C-36C)  
133.35 257.8 (Rwy 18R-36L)

- NOTE: For turbo jets only.
- NOTE: If unable to accept climb rates, advise ATC on initial contact.
- NOTE: Transponder code will be issued via PDC or Charlotte CLNC DEL.
- NOTE: Accelerate to 250K, if unable advise ATC. Upon reaching 10000 MSL, accelerate to and maintain 280K, if unable advise ATC.



TAKEOFF MINIMUMS  
Rwys 18L/C/R, 36C/R:  
Rwy 36L:

Standard with minimum climb of 500' per NM to 1260.  
Standard with minimum climb of 500' per NM to 1400.

(CONTINUED ON FOLLOWING PAGE)

NOTE: Chart not to scale.

SE-2, 13 JUN 2024 to 11 JUL 2024