

LOC/DME I-RGS <b>110.15</b> Chan 38(Y)	APP CRS <b>183°</b>	Rwy Idg TDZE <b>744</b> Apt Elev <b>748</b>	<b>9000</b>
--	------------------------	---	-------------

# ILS RWY 18R (CAT II & III)

CHARLOTTE/DOUGLAS INTL (CLT)

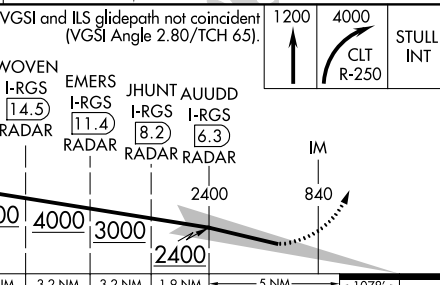
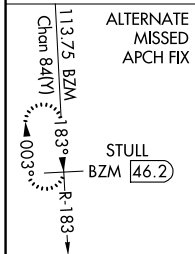
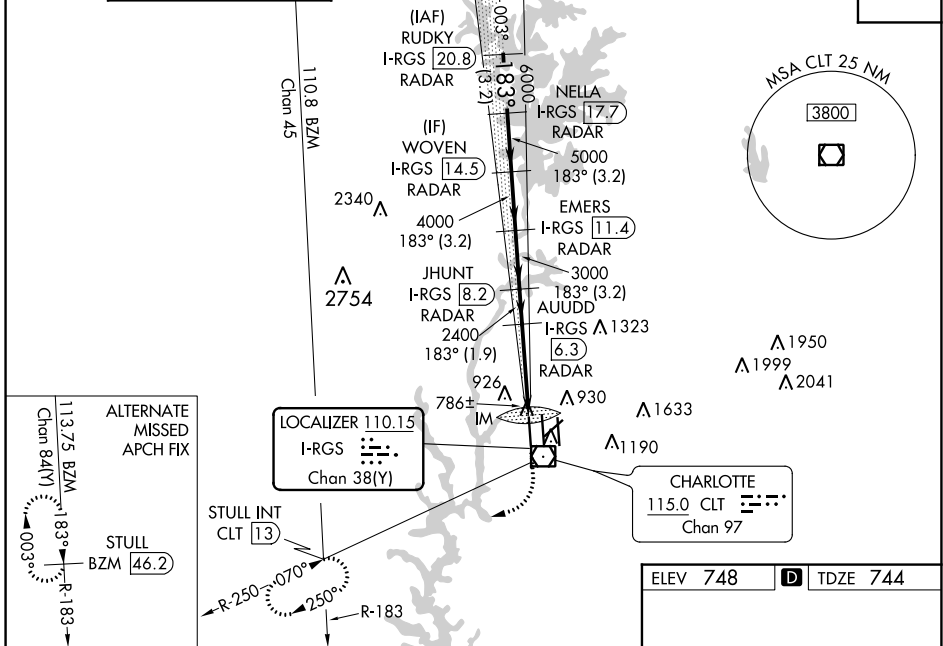
**RADAR required for procedure entry. DME or RADAR required.**

Simultaneous approach authorized.

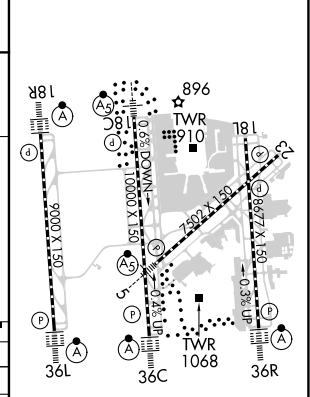
ALSF-2

MISSED APPROACH: Climb to 1200 then climbing right turn to 4000 on CLT VOR/DME R-250 to STULL INT/CLT 13 DME and hold, continue climb-in-hold to 4000.

D-ATIS	CHARLOTTE APP CON	CHARLOTTE TOWER	GND CON	CLNC DEL
ARR <b>121.15</b> DEP <b>132.1</b>	(001°-119°) <b>128.32</b> (120°-295°) <b>120.05</b> (296°-360°) <b>134.75</b> (180°-359°) <b>257.2</b> (360°-179°) <b>307.8</b>	(Rwys 18L-36R) <b>118.1 257.8</b> (Rwy 18C-36C) <b>126.4 257.8</b> (Rwy 18R-36L) <b>133.35 257.8</b>	<b>121.8 348.6</b> (WEST) <b>121.9 348.6</b> (EAST)	<b>127.15</b> <b>348.6</b>



ELEV 748	<b>D</b> TDZE 744
----------	-------------------



CATEGORY	A	B	C	D
S-ILS 18R	CAT II RA 106/12 100 DA 844			
S-ILS 18R	CAT III RVR 06			

## CATEGORY II & III ILS SPECIAL AIRCREW & AIRCRAFT CERTIFICATION REQUIRED

HIRL all Rwys  
REIL Rws 18L and 23  
TDZ/CL Rws 18R, 36L, 36C and 36R

SE-2, 13 JUN 2024 to 11 JUL 2024

SE-2, 13 JUN 2024 to 11 JUL 2024