

LOC/DME I-RGS <b>110.15</b> Chan <b>38(Y)</b>	APP CRS <b>183°</b>	Rwy Idg <b>9000</b> TDZE <b>744</b> Apt Elev <b>748</b>
---	------------------------	---

# ILS RWY 18R (SA CAT I)

CHARLOTTE/DOUGLAS INTL (CLT)

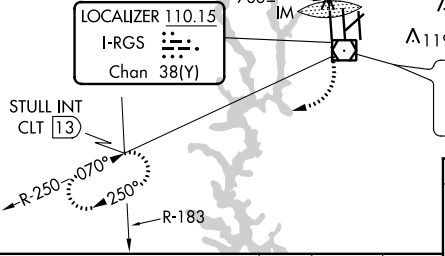
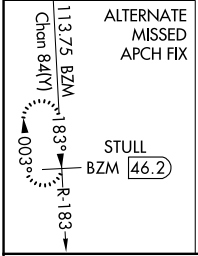
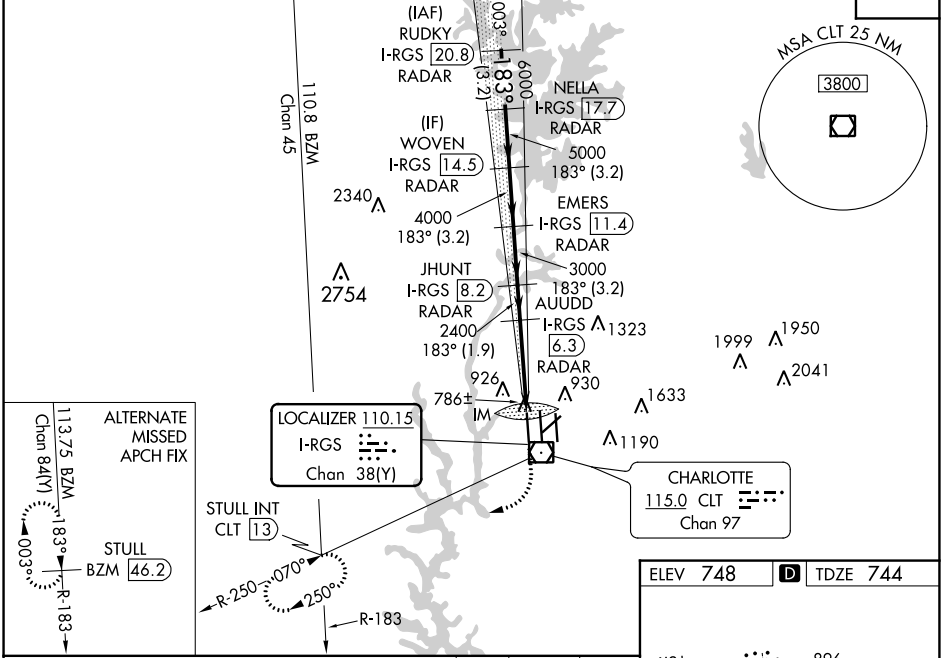
**RADAR** required for procedure entry. DME or RADAR required.

Simultaneous approach authorized.  
Requires specific OPSPEC, MSPEC or LOA approval and use of HUD to DH.

ALSF-2

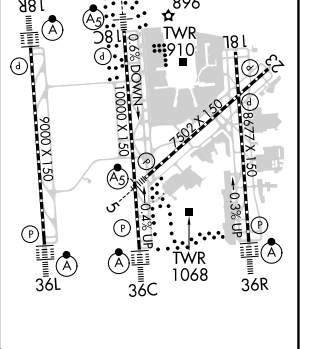
MISSED APPROACH: Climb to 1200 then climbing right turn to 4000 on CLT VOR/DME R-250 to STULL INT/CLT 13 DME and hold, continue climb-in-hold to 4000.

D-ATIS ARR <b>121.15</b> DEP <b>132.1</b>	CHARLOTTE APP CON (001°-119°) <b>128.32</b> (120°-295°) <b>120.05</b> (296°-360°) <b>134.75</b> (180°-359°) <b>257.2</b> (360°-179°) <b>307.8</b>	CHARLOTTE TOWER (Rwys 18L-36R) <b>118.1 257.8</b> (Rwy 18C-36C) <b>126.4 257.8</b> (Rwy 18R-36L) <b>133.35 257.8</b>	GND CON <b>121.8 348.6</b> (WEST) <b>121.9 348.6</b> (EAST)	CLNC DEL <b>127.15</b> <b>348.6</b>
---	--	---	---	---



ELEV 748	<b>D</b> TDZE 744
----------	-------------------

VGSi and ILS glidepath not coincident (VGSi Angle 2.80/TCH 65).				
RUDKY I-RGS 20.8 RADAR	NELLA I-RGS 17.7 RADAR	WOVEN I-RGS 14.5 RADAR	EMERS I-RGS 11.4 RADAR	JHUNT I-RGS 8.2 RADAR
AUDD I-RGS 6.3 RADAR	2400	2400	2400	2400
7000	6000	5000	4000	3000
GS 3.00° TCH 55	183°			
	3.2 NM	3.2 NM	3.2 NM	3.2 NM
			1.9 NM	5 NM
				1078'
CATEGORY	A	B	C	D
S-ILS 18R	RA 228/14 150 DA 894			



## SA CATEGORY I ILS SPECIAL AIRCREW & AIRCRAFT CERTIFICATION REQUIRED

HIRL all Rwys  
REIL Rwys 18L and 23  
TDZ/CL Rwys 18R, 36L, 36C and 36R

SE-2, 13 JUN 2024 to 11 JUL 2024

SE-2, 13 JUN 2024 to 11 JUL 2024