

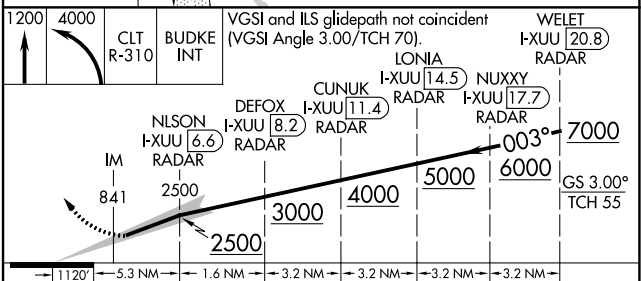
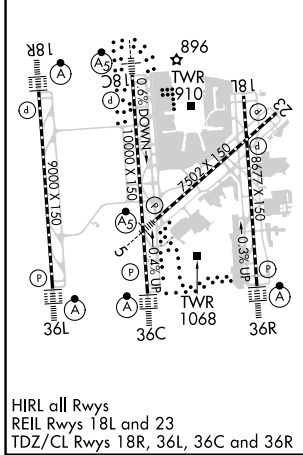
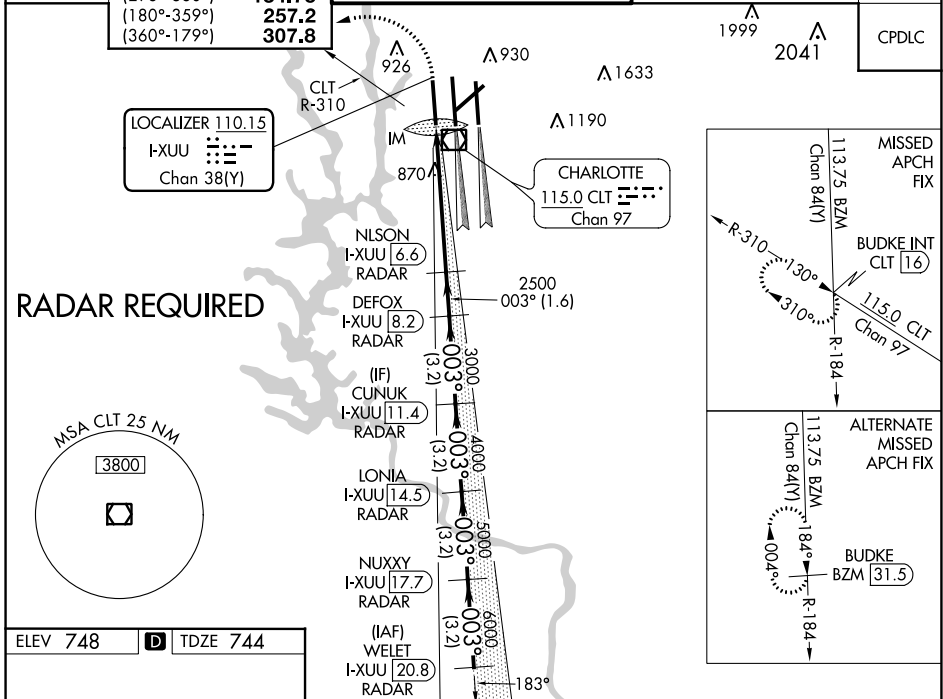
LOC/DME I-XUU 110.15 Chan 38(Y)	APP CRS 003°	Rwy Idg TDZE 744 Apt Elev 748	9000
--	------------------------	---	-------------

ILS RWY 36L (CAT II & III)

CHARLOTTE/DOUGLAS INTL (CLT)

⚠ Simultaneous approach authorized. DME or RADAR required.	ALSF-2 (A)	MISSED APPROACH: Climb to 1200 then climbing left turn to 4000 on CLT VOR/DME R-310 to BUDKE INT/CLT 16 DME and hold.
--	----------------------	---

D-ATIS ARR 121.15 DEP 132.1	CHARLOTTE APP CON (001°-119°) 128.32 (120°-295°) 120.05 (296°-360°) 134.75 (180°-359°) 257.2 (360°-179°) 307.8	CHARLOTTE TOWER (Rwys 18L-36R) 118.1 257.8 (Rwy 18C-36C) 126.4 257.8 (Rwy 18R-36L) 133.35 257.8	GND CON 121.8 348.6 (WEST) 121.9 348.6 (EAST)	CLNC DEL 127.15 348.6
---	--	---	---	---



CATEGORY	A	B	C	D
S-ILS 36L	CAT II RA 106/12 100 DA 844			
S-ILS 36L	CAT IIIa RVR 07			
S-ILS 36L	CAT IIIb RVR 06			
S-ILS 36L	CAT IIIc NA			

CATEGORY II & III ILS SPECIAL AIRCREW & AIRCRAFT CERTIFICATION REQUIRED

SE-2, 13 JUN 2024 to 11 JUL 2024

SE-2, 13 JUN 2024 to 11 JUL 2024