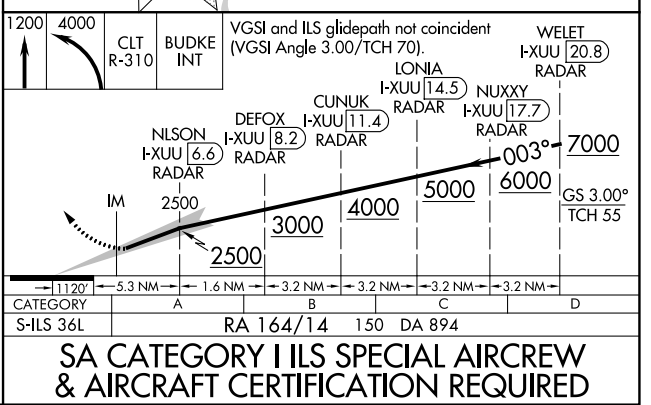
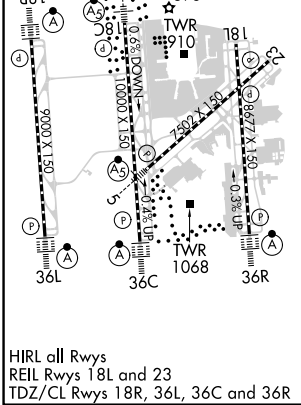
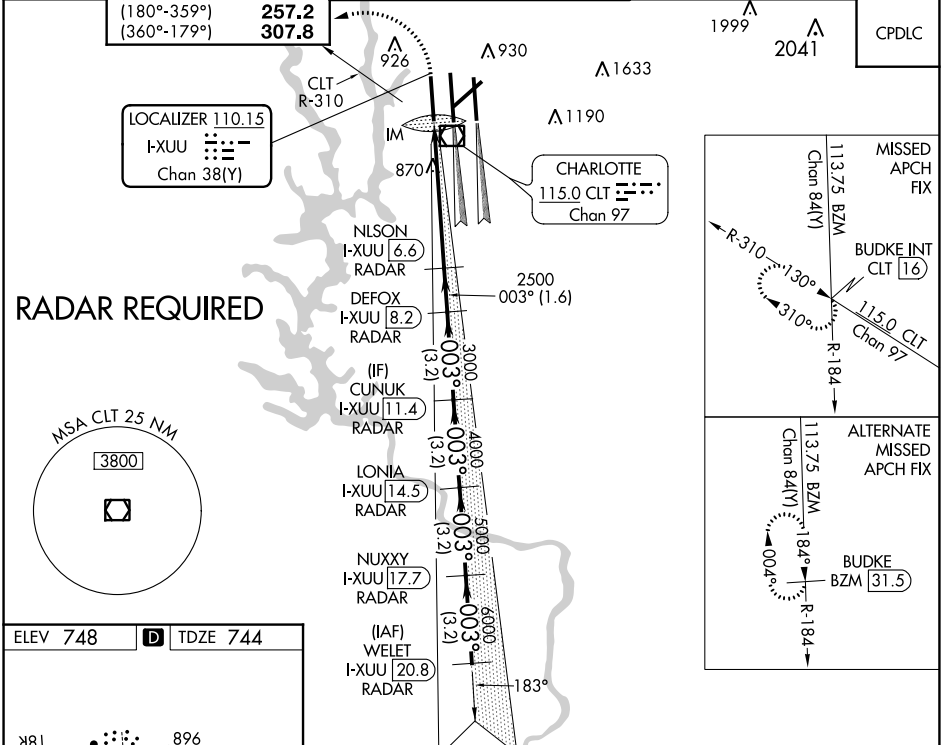


LOC/DME I-XUU <b>110.15</b> Chan <b>38(Y)</b>	APP CRS <b>003°</b>	Rwy Idg TDZE <b>744</b> Apt Elev <b>748</b>	<b>9000</b>
---	------------------------	---	-------------

# ILS RWY 36L (SA CAT I)

CHARLOTTE/DOUGLAS INTL (CLT)

<b>⚠</b> Simultaneous approach authorized. <b>⚠</b> DME or RADAR required. Requires specific OPSPEC, MSPEC, or LOA approval and use of HUD to DH.	<b>ALSF-2</b> 	<b>MISSED APPROACH:</b> Climb to 1200 then climbing left turn to 4000 and on CLT VOR/DME R-310 to BUDKE INT/CLT 16 DME and hold.		
		D-ATIS	CHARLOTTE APP CON	CHARLOTTE TOWER
ARR <b>121.15</b>	(001°-119°) <b>128.32</b>	(Rwys 18L-36R) <b>118.1 257.8</b>	<b>121.8 348.6 (WEST)</b>	<b>127.15</b>
DEP <b>132.1</b>	(120°-295°) <b>120.05</b>	(Rwy 18C-36C) <b>126.4 257.8</b>	<b>121.9 348.6 (EAST)</b>	<b>348.6</b>
	(296°-360°) <b>134.75</b>	(Rwy 18R-36L) <b>133.35 257.8</b>		
	(180°-359°) <b>257.2</b>			
	(360°-179°) <b>307.8</b>			



SE-2, 13 JUN 2024 to 11 JUL 2024

SE-2, 13 JUN 2024 to 11 JUL 2024