

LOC/DME I-PEP 111.3 Chan 50	APP CRS 183°	Rwy Idg 10000 TDZE 742 Apt Elev 748
--	------------------------	--

ILS or LOC RWY 18C

CHARLOTTE/DOUGLAS INTL (CLT)

RADAR required for procedure entry. DME or RADAR required

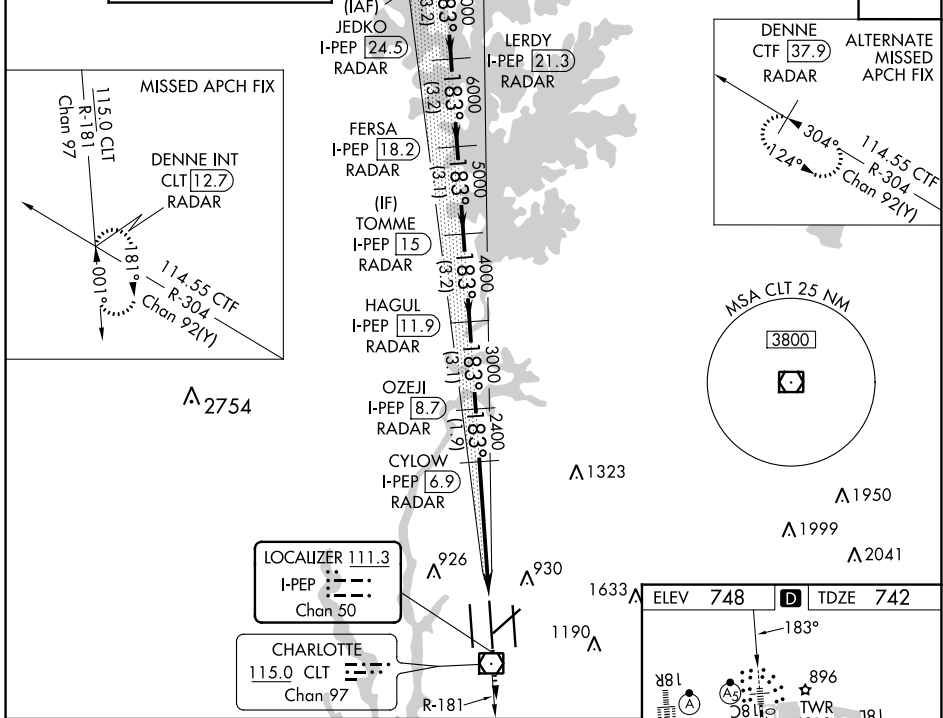
⚠ Circling NA at night. Simultaneous approach authorized. For inop ALS, increase S-LOC 18C Cat C/D visibility to 1/8 SM.

⚠ ** RVR 1800 authorized with the use of FD or AP or HUD to DA.

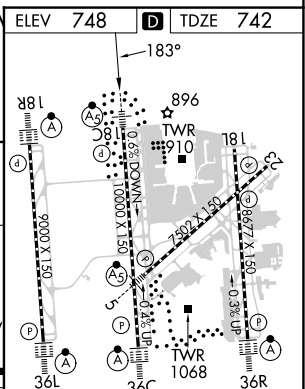
MALSRR

MISSED APPROACH: Climb to 3000 on CLT VOR/DME R-181 to DENNE INT/CLT 12.7 DME/RADAR and hold.

D-ATIS ARR 121.15 DEP 132.1	CHARLOTTE APP CON (001°-119°) 128.32 (120°-295°) 120.05 (296°-360°) 134.75 (180°-359°) 257.2 (360°-179°) 307.8	CHARLOTTE TOWER (Rwys 18L-36R) 118.1 257.8 (Rwy 18C-36C) 126.4 257.8 (Rwy 18R-36L) 133.35 257.8	GND CON 121.8 348.6 (WEST) 121.9 348.6 (EAST)	CLNC DEL 127.15 348.6
---	--	---	---	---



JEDKO I-PEP 24.5 RADAR	LERDY I-PEP 21.3 RADAR	VGSI and ILS glidepath not coincident (VGSI Angle 3.00/TCH 69).	FERSA I-PEP 18.2 RADAR	TOMME I-PEP 15 RADAR	HAGUL I-PEP 11.9 RADAR	OZEJI I-PEP 8.7 RADAR	CYLOW I-PEP 6.9 RADAR	DENNE INT I-PEP 1.8
8000	7000	6000	5000	4000	3000	2400	2000	
GS 3.00° TCH 55								
-3.2 NM		-3.2 NM		-3.1 NM		-3.1 NM		-1.9 NM



CATEGORY	A	B	C	D
S-ILS 18C **	942/24		200 (200-1/2)	
S-LOC 18C	1220/24 478 (500-1/2)		1220/50 478 (500-1)	
CIRCLING	1380-1 632 (700-1)		1500-2 1/4 752 (800-2 1/4) 1500-2 1/2 752 (800-2 1/2)	

HIRL all Rwys
REIL Rwys 18L and 23
TDZ/CL Rwys 18R, 36L, 36C and 36R

FAF to MAP 5 NM

Knots	60	90	120	150	180
Min:Sec	5:00	3:20	2:30	2:00	1:40

SE-2, 13 JUN 2024 to 11 JUL 2024

SE-2, 13 JUN 2024 to 11 JUL 2024