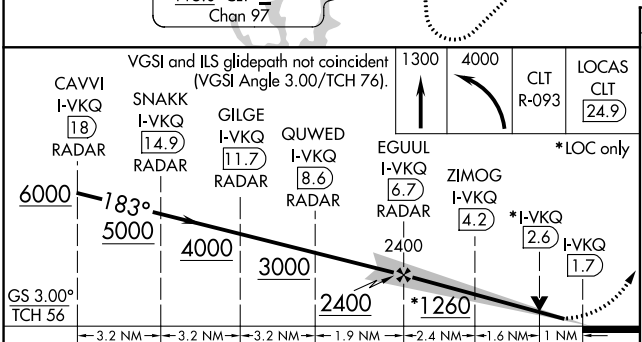
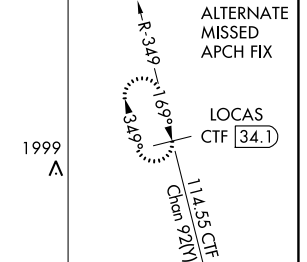
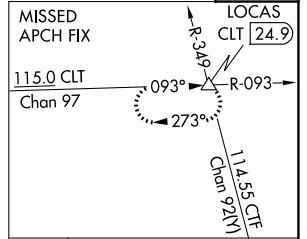
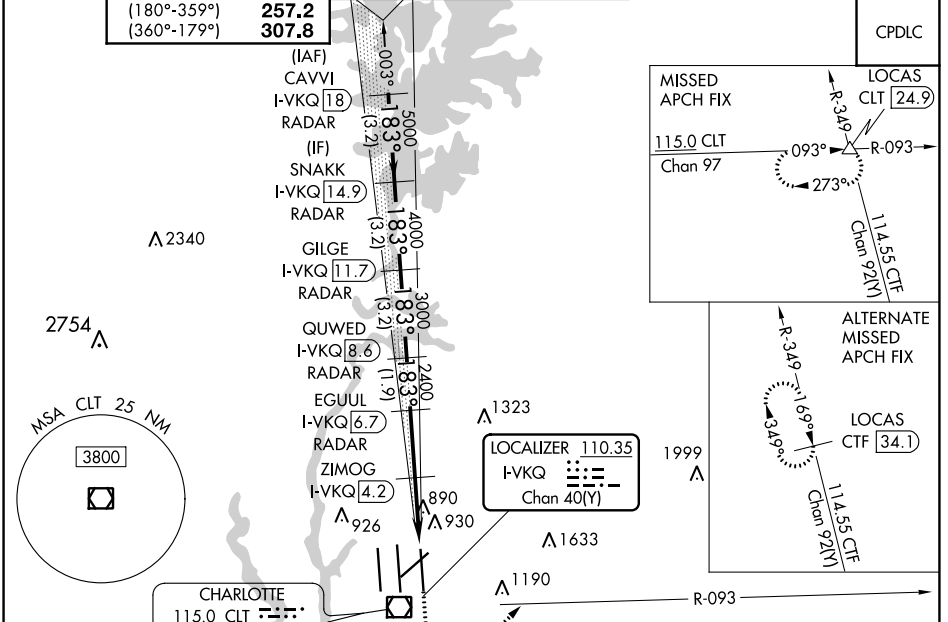


LOC/DME I-VKQ <b>110.35</b> Chan <b>40(Y)</b>	APP CRS <b>183°</b>	Rwy Idg <b>8676</b> TDZE <b>748</b> Apt Elev <b>748</b>
---	------------------------	---

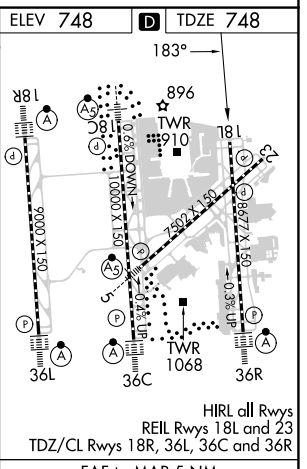
# ILS or LOC RWY 18L

CHARLOTTE/DOUGLAS INTL (CLT)

RADAR required for procedure entry. DME or RADAR required.		MISSED APPROACH: Climb to 1300 then climbing left turn to 4000 on CLT VOR/DME R-093 to LOCAS INT/CLT 24.9 DME and hold.	
<p><b>Simultaneous approach authorized.</b></p> <p>Rwy 18L helicopter visibility reduction below RVR 4000 NA.</p>			
D-ATIS <b>ARR 121.15</b> <b>DEP 132.1</b>	CHARLOTTE APP CON <b>128.32</b> (001°-119°) <b>120.05</b> (120°-295°) <b>134.75</b> (296°-360°) <b>257.2</b> (180°-359°) <b>307.8</b> (360°-179°)	CHARLOTTE TOWER <b>118.1 257.8</b> (Rwys 18L-36R) <b>126.4 257.8</b> (Rwy 18C-36C) <b>133.35 257.8</b> (Rwy 18R-36L)	GND CON <b>121.8 348.6</b> (WEST) <b>121.9 348.6</b> (EAST)



CATEGORY	A	B	C	D
S-ILS 18L	1002/40 254 (300-¾)			
S-LOC 18L	1260/55	512 (600-1)	1260-1⅓	512 (600-1⅓)
ZIMOG FIX MINIMUMS (DME REQUIRED)				
S-LOC 18L	1140/55	392 (400-1)	1140/60	392 (400-1¼)



Knots	FAF to MAP 5 NM				
	60	90	120	150	180
Min:Sec	5:00	3:20	2:30	2:00	1:40

SE-2, 13 JUN 2024 to 11 JUL 2024