

LOC/DME I-RGS <b>110.15</b> Chan <b>38(Y)</b>	APP CRS <b>183°</b>	Rwy Idg TDZE <b>744</b> Apt Elev <b>748</b>	<b>9000</b>
---	------------------------	---	-------------

# ILS or LOC RWY 18R

CHARLOTTE/DOUGLAS INTL (CLT)

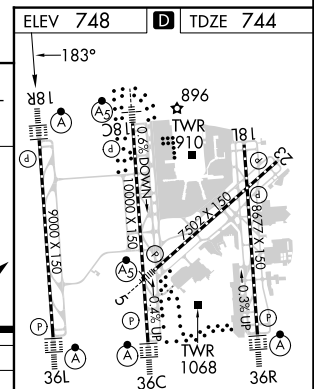
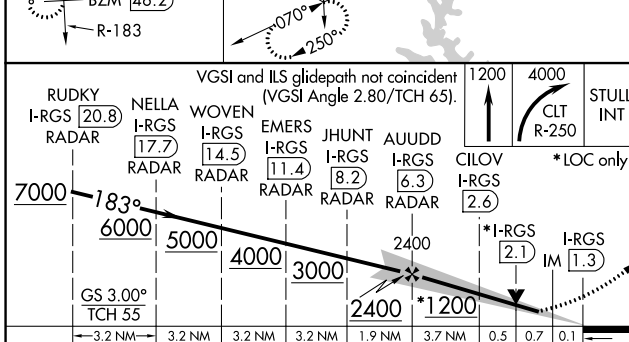
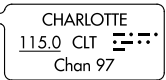
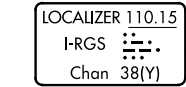
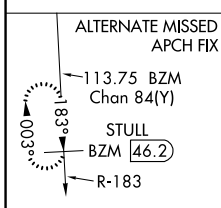
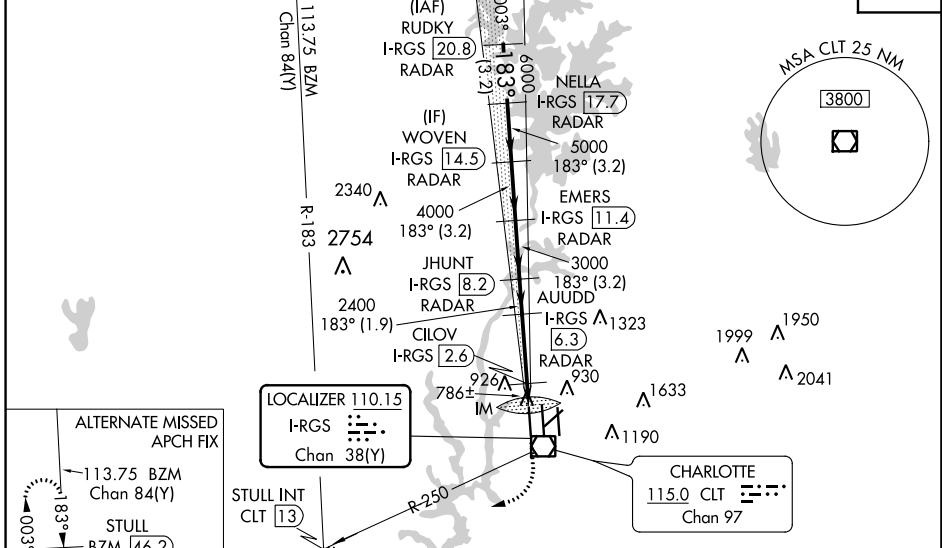
RADAR required for procedure entry. DME or RADAR required.

ALSF-2

MISSED APPROACH: Climb to 1200 then climbing right turn to 4000 on CLT VOR/DME R-250 to STULL INT/CLT 13 DME and hold, continue climb-in-hold to 4000.

Simultaneous approach authorized. CILOV minimums: For inop ALS, increase S-LOC 18R all Cats visibility to RVR 4500.

D-ATIS ARR <b>121.15</b> DEP <b>132.1</b>	CHARLOTTE APP CON (001°-119°) <b>128.32</b> (120°-295°) <b>120.05</b> (296°-360°) <b>134.75</b> (180°-359°) <b>257.2</b> (360°-179°) <b>307.8</b>	CHARLOTTE TOWER (Rwys 18L-36R) <b>118.1 257.8</b> (Rwy 18C-36C) <b>126.4 257.8</b> (Rwy 18R-36L) <b>133.35 257.8</b>	GND CON <b>121.8 348.6</b> (WEST) <b>121.9 348.6</b> (EAST)	CLNC DEL <b>127.15</b> <b>348.6</b>
---	--	---	---	---



CATEGORY	A	B	C	D
S-ILS 18R	944/18 200 (200-½)			
S-LOC 18R	1200/24 456 (500-½)	1200/45 456 (500-¾)		
CILOV FIX MINIMUMS (DME REQUIRED)				
S-LOC 18R	1040/24 296 (300-½)			

FAF to MAP 5 NM					
Knots	60	90	120	150	180
Min:Sec	5:00	3:20	2:30	2:00	1:40

SE-2, 13 JUN 2024 to 11 JUL 2024

SE-2, 13 JUN 2024 to 11 JUL 2024