

LOC I-DQG	APP CRS	Rwy Idg	10000
111.7	003°	TDZE	707
		Apt Elev	748

ILS or LOC RWY 36C

CHARLOTTE/DOUGLAS INTL (CLT)

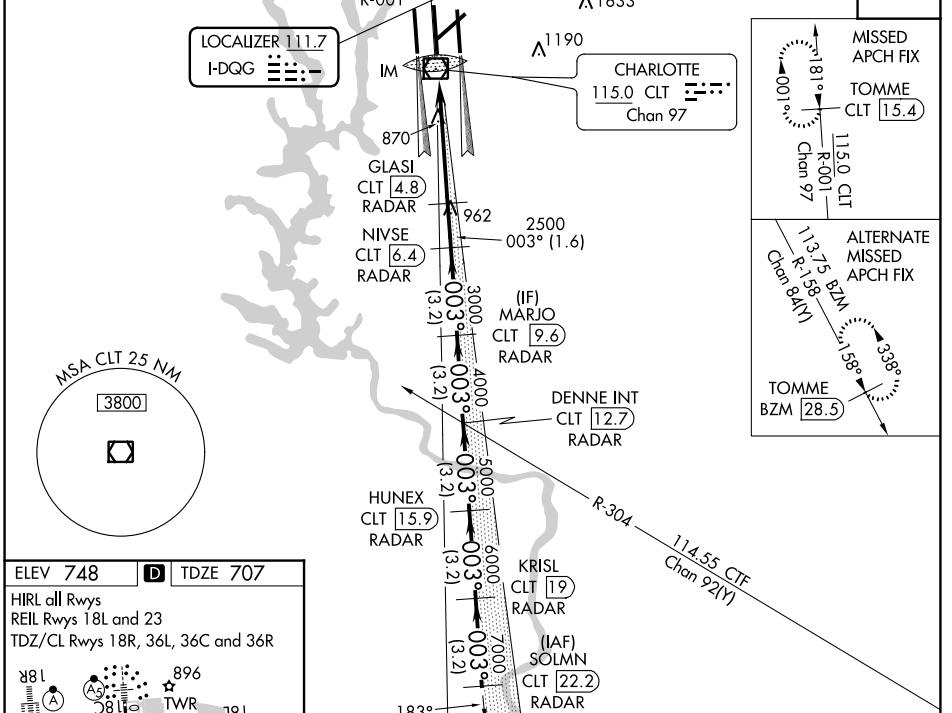
RADAR required for procedure entry. DME or RADAR required.

⚠ Circling NA at night. Simultaneous approach authorized. DQG ILS LLZ Rwy 36C unusable for rollout guidance.

ALSF-2
A

MISSED APPROACH: Climb to 3000 on CLT VOR/DME R-001 to TOMME/CLT 15.4 DME and hold.

D-ATIS	CHARLOTTE APP CON	CHARLOTTE TOWER	GND CON	CLNC DEL
ARR 121.15	(001°-119°) 128.32	(Rwys 18L-36R) 118.1 257.8	121.8 348.6 (WEST)	127.15
DEP 132.1	(120°-295°) 120.05	(Rwy 18C-36C) 126.4 257.8	121.9 348.6 (EAST)	348.6
	(296°-360°) 134.75	(Rwy 18R-36L) 133.35 257.8		
	(180°-359°) 257.2			
	(360°-179°) 307.8			



ELEV 748	D	TDZE 707			
HIRL all Rwys					
REIL Rwys 18L and 23					
TDZ/CL Rwys 18R, 36L, 36C and 36R					
FAF to MAP 5.4 NM					
Knots	60	90	120	150	180
Min:Sec	5:24	3:36	2:42	2:10	1:48

3000	CLT R-001	TOMME CLT 15.4	VGSi and ILS glidepath not coincident (VGSi Angle 3.00/TCH 72).				SOLMN CLT 22.2
2500	GLASI CLT 4.8	NIVSE CLT 6.4	MARJO CLT 9.6	DENNE INT CLT 12.7	HUNEX CLT 15.9	KRISL CLT 19	
2000	IM						
1500							
1000							
500							
0							
	0.2	5.2 NM	1.6 NM	3.2 NM	3.2 NM	3.2 NM	
CATEGORY	A		B		C		
S-ILS 36C	907/18		200 (200-1/2)				
S-LOC 36C	1120/24		413 (400-1/2)				
C CIRCLING	1380-1 632 (700-1)		1500-2 1/4 752 (800-2 1/4)		1500-2 1/2 752 (800-2 1/2)		

SE-2, 13 JUN 2024 to 11 JUL 2024

SE-2, 13 JUN 2024 to 11 JUL 2024