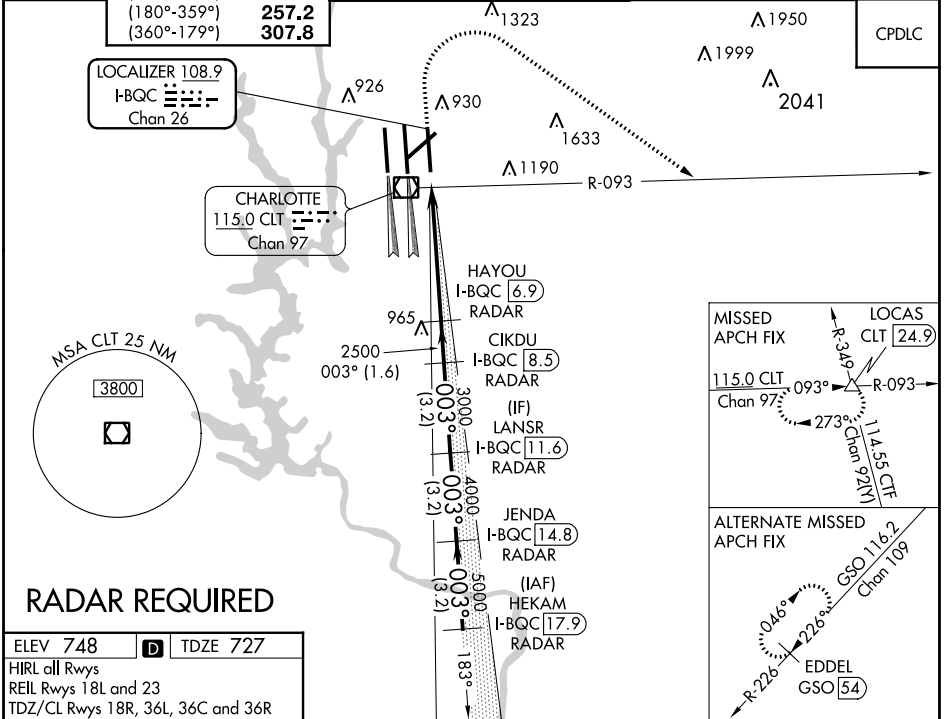


LOC/DME I-BQC 108.9 Chan 26	APP CRS 003°	Rwy Idg TDZE Apt Elev	8390 727 748
------------------------------------------	------------------------	-----------------------------	-----------------------------------------

ILS or LOC RWY 36R

CHARLOTTE/DOUGLAS INTL (CLT)

⚠ Circling NA at night. Simultaneous approach authorized. DME or RADAR required.	ALSF-2 	MISSED APPROACH: Climb to 1320 then climbing right turn to 4000 on CLT VOR/DME R-093 to LOCAS INT/24.9 DME and hold.		
	D-ATIS ARR 121.15 DEP 132.1	CHARLOTTE APP CON (001°-119°) 128.32 (120°-295°) 120.05 (296°-360°) 134.75 (180°-359°) 257.2 (360°-179°) 307.8	CHARLOTTE TOWER (Rwys 18L-36R) 118.1 257.8 (Rwy 18C-36C) 126.4 257.8 (Rwy 18R-36L) 133.35 257.8	GND CON 121.8 348.6 (WEST) 121.9 348.6 (EAST)



RADAR REQUIRED

ELEV 748	D	TDZE 727			
HIRL all Rwys					
REIL Rwys 18L and 23					
TDZ/CL Rwys 18R, 36L, 36C and 36R					
FAF to MAP 5.4 NM					
Knots	60	90	120	150	180
Min:Sec	5:24	3:36	2:42	2:10	1:48

1320 4000 CLT R-093	LOCAS CLT [24.9]	VGSJ and ILS glidepath not coincident (VGSJ Angle 3.00/TCH 74). HEKAM JENDA I-BQC [17.9] RADAR LANSR I-BQC [14.8] RADAR CIKDU I-BQC [11.6] RADAR HAYOU I-BQC [8.5] RADAR I-BQC [6.9] RADAR		
* LOC only.				
I-BQC [1.5] *I-BQC [2.5]	2500 3000 4000 5000 6000	GS 3.00° TCH 55		
CATEGORY S-ILS 36R	A 927/18	B 200 (200-½)	C 1120/35	D 393 (400-½)
S-LOC 36R	1120/24 393 (400-½)	1120/35 393 (400-½)	1500-2¼ 752 (800-2¼)	1500-2½ 752 (800-2½)
C CIRCLING	1380-1 632 (700-1)	1500-2¼ 752 (800-2¼)	1500-2½ 752 (800-2½)	

SE-2, 13 JUN 2024 to 11 JUL 2024

SE-2, 13 JUN 2024 to 11 JUL 2024