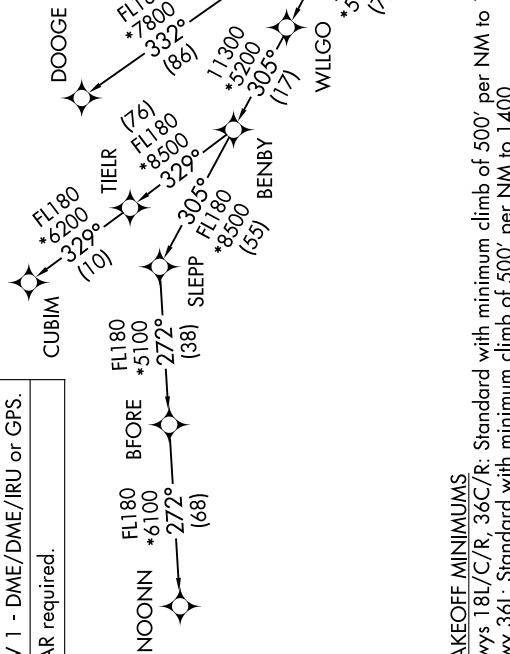


# JOJO FIVE DEPARTURE (RNAV)

CHARLOTTE DEP CON  
120.5 257.2  
D-ATIS DEP  
132.1  
CUNC DEL  
127.15 348.6  
CPDIC  
GND CON  
121.8 348.6 (WEST)  
121.9 348.6 (EAST)  
CHARLOTTE TOWER  
118.1 257.8 (Rwy 18L-36R)  
126.4 257.8 (Rwy 18C-36C)  
133.35 257.8 (Rwy 18R-36L)

**TOP ALTITUDE:  
8000**



### TAKEOFF MINIMUMS

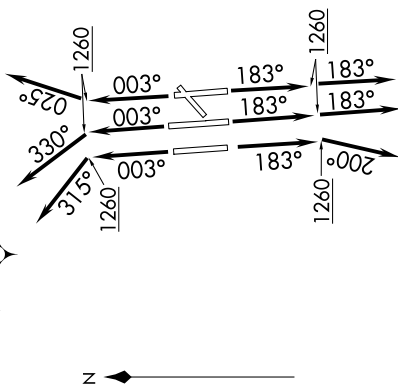
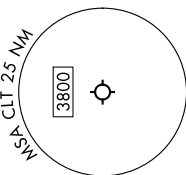
Rwys 18L/C/R, 36C/R: Standard with minimum climb of 500' per NM to 1260.  
Rwy 36L: Standard with minimum climb of 500' per NM to 1400.

NOTE: For turbo jets only.

NOTE: If unable to accept climb rates, advise ATC on initial contact.

NOTE: NOONN Transition ATC assigned only.

NOTE: Accelerate to 250K, if unable advise ATC. Upon reaching 10000 MSL, accelerate to and maintain 280K, if unable advise ATC.



(CONTINUED ON FOLLOWING PAGE)

NOTE: Chart not to scale.

# JOJO FIVE DEPARTURE (RNAV)