

WAAS CH 81800 W18B	APP CRS 183°	Rwy Idg 10000 TDZE 742 Apt Elev 748
--	------------------------	--

RNAV (GPS) Y RWY 18C

CHARLOTTE/DOUGLAS INTL (CLT)

RNP APCH.

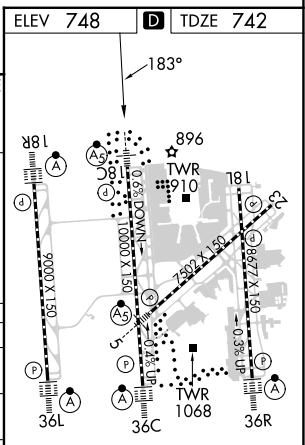
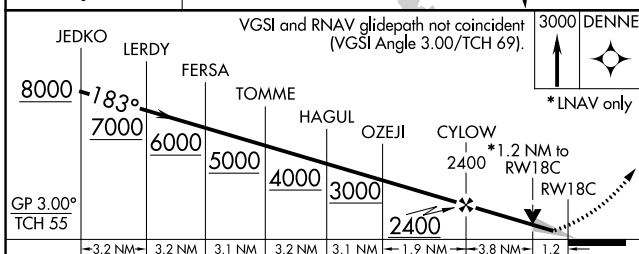
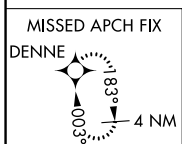
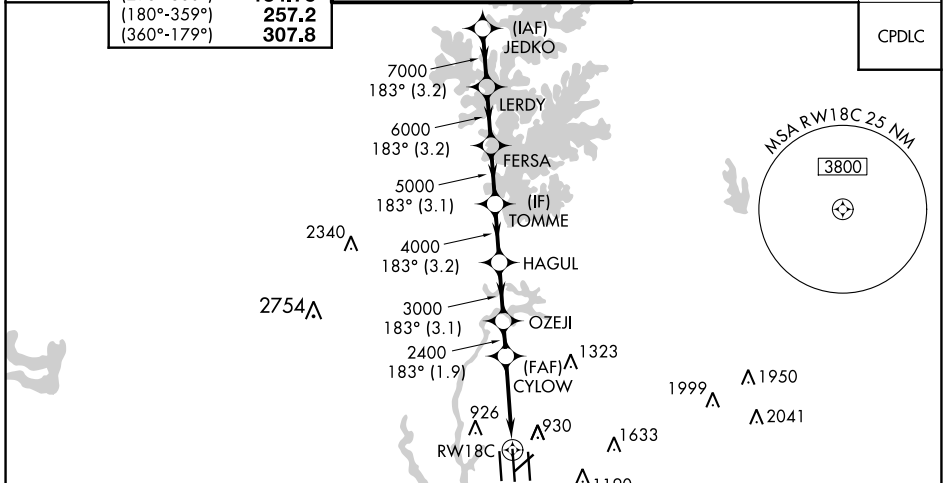
⚠ Circling NA at night. Simultaneous approach authorized. LNAV procedure NA during simultaneous operations. Use of FD or AP required during simultaneous operations. For uncompensated Baro-VNAV systems, LNAV/VNAV NA below -11°C or above 54°C.
**** RVR 1800 authorized with use of FD or AP or HUD to DA.**

MALSR



MISSED APPROACH:
Climb to 3000 direct DENNE and hold.

D-ATIS ARR 121.15 DEP 132.1	CHARLOTTE APP CON (001°-119°) 128.32 (120°-295°) 120.05 (296°-360°) 134.75 (180°-359°) 257.2 (360°-179°) 307.8	CHARLOTTE TOWER (Rwys 18L-36R) 118.1 257.8 (Rwy 18C-36C) 126.4 257.8 (Rwy 18R-36L) 133.35 257.8	GND CON 121.8 348.6 (WEST) 121.9 348.6 (EAST)	CLNC DEL 127.15 348.6
---	--	---	---	---



CATEGORY	A	B	C	D
LPV DA **	942/24		200 (200-½)	
LNAV/VNAV DA	1070/26		328 (400-½)	
LNAV MDA	1200/24	458 (500-½)	1200/45	458 (500-¾)
C CIRCLING	1380-1	632 (700-1)	1500-2¼ 752 (800-2¼)	1500-2½ 752 (800-2½)

HIRL all Rwys
REIL Rwys 18L and 23
TDZ/CL Rwys 18R, 36L, 36C and 36R

SE-2, 13 JUN 2024 to 11 JUL 2024

SE-2, 13 JUN 2024 to 11 JUL 2024