

WAAS CH 82415 W18D	APP CRS 183°	Rwy Idg 9000 TDZE 744 Apt Elev 748
--	------------------------	---

RNAV (GPS) Y RWY 18R

CHARLOTTE/DOUGLAS INTL (CLT)

RNP APCH

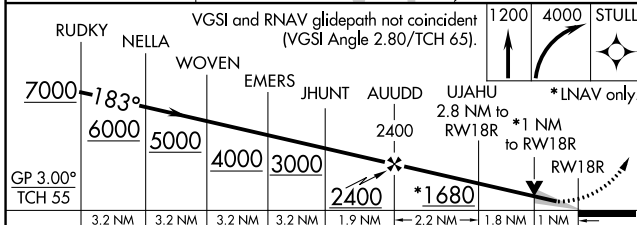
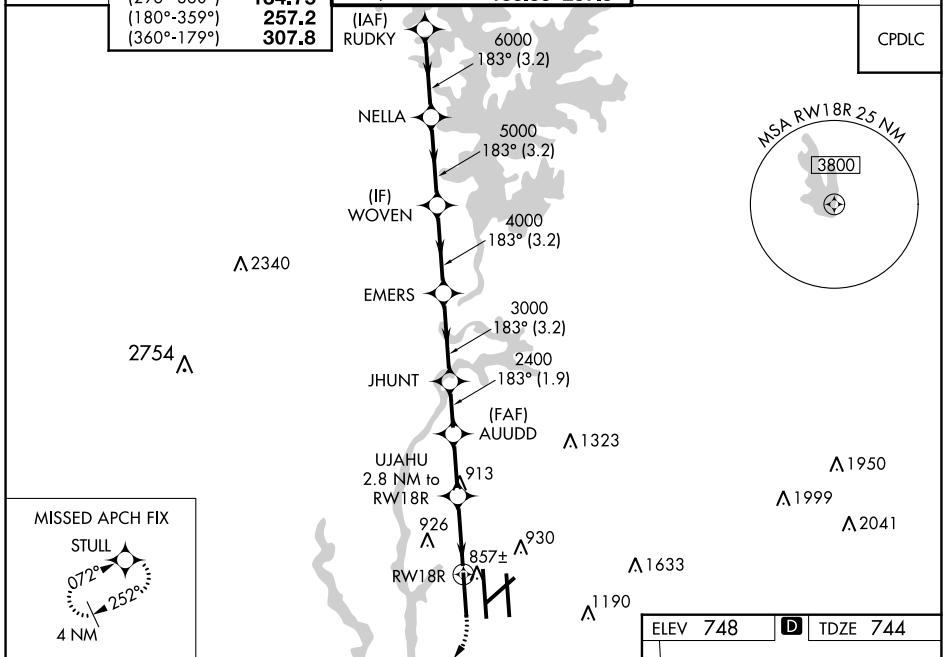
⚠ Circling NA at night. Simultaneous approach authorized. RNAV procedure NA during simultaneous operations. Use of FD or AP providing Baro-VNAV track guidance required during simultaneous operations. For uncompensated Baro-VNAV systems, LNAV/VNAV NA below -11°C or above 54°C. For inop ALS, increase LNAV/VNAV all Cats visibility to RVR 4500. For inop ALS, increase LNAV Cat C/D visibility to RVR 5500.

ALSF-2

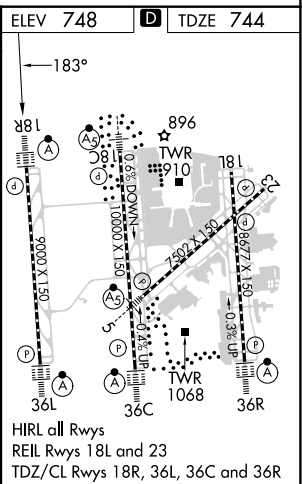


MISSED APPROACH: Climb to 1200 then climbing right turn to 4000 direct STULL and hold, continue climb-in-hold to 4000.

D-ATIS ARR 121.15 DEP 132.1	CHARLOTTE APP CON (001°-119°) 128.32 (120°-295°) 120.05 (296°-360°) 134.75 (180°-359°) 257.2 (360°-179°) 307.8	CHARLOTTE TOWER (Rwys 18L-36R) 118.1 257.8 (Rwy 18C-36C) 126.4 257.8 (Rwy 18R-36L) 133.35 257.8	GND CON 121.8 348.6 (WEST) 121.9 348.6 (EAST)	CLNC DEL 127.15 348.6
---	--	---	---	---



CATEGORY	A	B	C	D
LPV DA	944/18		200 (200-½)	
LNAV/VNAV DA	1018/24		274 (300-½)	
LNAV MDA	1120/24 376 (400-½)		1120/40 376 (400-¾)	
C CIRCLING	1380-1 632 (700-1)		1500-2¼ 752 (800-2¼) 1500-2½ 752 (800-2½)	



SE-2, 13 JUN 2024 to 11 JUL 2024

SE-2, 13 JUN 2024 to 11 JUL 2024