

| | | | |
|--|------------------------|-----------------------------|---|
| WAAS CH 56515 W36A | APP CRS 003° | Rwy Idg TDZE Apt Elev | 9000 744 748 |
|--|------------------------|-----------------------------|---|

RNAV (GPS) Y RWY 36L

CHARLOTTE/DOUGLAS INTL (CLT)

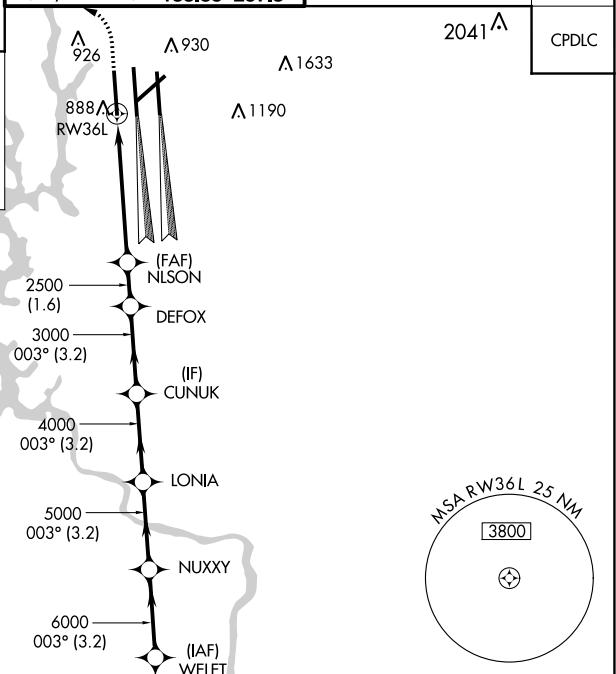
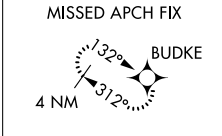
RADAR required for procedure entry. RNP APCH.

⚠ Circling NA at night. Simultaneous approach authorized. LNAV procedure NA during simultaneous operations. Use of FD or AP required during simultaneous operations. For inop ALS, increase LNAV/VNAV all Cats visibility to RVR 4500 and increase LNAV Cats C/D visibility to RVR 6000. For uncompensated Baro-VNAV systems, LNAV/VNAV NA below -10°C or above 54°C.

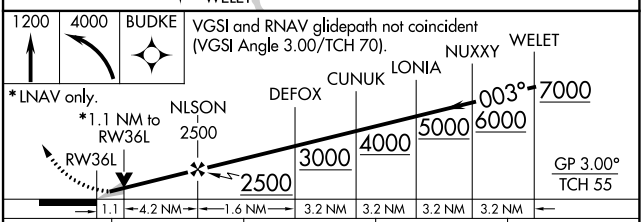
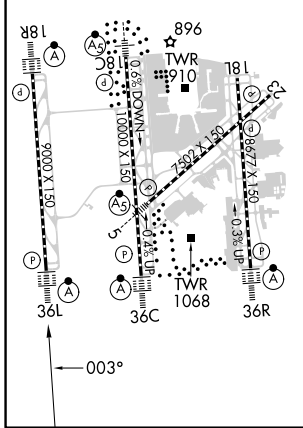
ALS-F-2

MISSED APPROACH: Climb to 1200 then climbing left turn to 4000 direct BUDKE and hold.

| | | | | |
|---|--|---|---|---|
| D-ATIS ARR 121.15 DEP 132.1 | CHARLOTTE APP CON (001°-119°) 128.32 (120°-295°) 120.05 (296°-360°) 134.75 (180°-359°) 257.2 (360°-179°) 307.8 | CHARLOTTE TOWER (Rwys 18L-36R) 118.1 257.8 (Rwy 18C-36C) 126.4 257.8 (Rwy 18R-36L) 133.35 257.8 | GND CON 121.8 348.6 (WEST) 121.9 348.6 (EAST) | CLNC DEL 127.15 348.6 |
|---|--|---|---|---|



| | | |
|--|----------|-----------------|
| ELEV 748 | D | TDZE 744 |
| HIRL all Rwys REIL Rwys 18L and 23 TDZ/CL Rwys 18R, 36L, 36C and 36R | | |



| | | | | |
|-------------------|---------|-------------|-------------------------|-------------------------|
| CATEGORY | A | B | C | D |
| LPV DA | 944/18 | | 200 (200-½) | |
| LNAV/VNAV DA | 1049/24 | | 305 (400-½) | |
| LNAV MDA | 1140/24 | 396 (400-½) | 1140/35 | 396 (400-¾) |
| C CIRCLING | 1380-1 | 632 (700-1) | 1500-2¼ 752 (800-2¼) | 1500-2½ 752 (800-2½) |

SE-2, 13 JUN 2024 to 11 JUL 2024

SE-2, 13 JUN 2024 to 11 JUL 2024