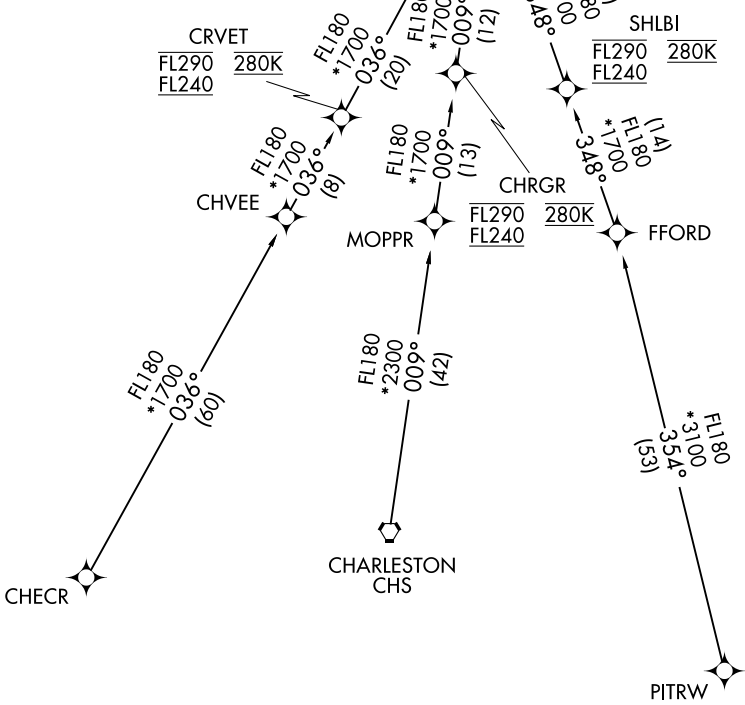
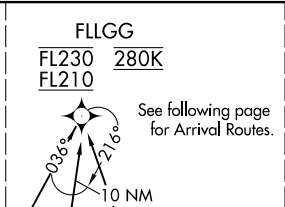


# STOCR FOUR ARRIVAL (RNAV) Transition Routes

CHARLOTTE APP CON  
126.15 282.325  
D-ATIS ARR  
121.15

RNAV 1 - DME/DME/IRU OR GPS.  
RADAR required.



- NOTE: Jet aircraft only.
- NOTE: Landing south use Rwy 18L transition, landing north use Rwy 36R transition. Expect runway assignment from CLT approach.
- NOTE: Jet aircraft descend via Mach number until 280K, if unable, advise ATC.

NOTE: Chart not to scale.

CHARLESTON TRANSITION (CHS.STOCR4)  
CHECR TRANSITION (CHECR.STOCR4)  
PITRW TRANSITION (PITRW.STOCR4)

(CONTINUED ON FOLLOWING PAGE)

SE-2, 13 JUN 2024 to 11 JUL 2024

SE-2, 13 JUN 2024 to 11 JUL 2024