

CICERO THREE DEPARTURE

AL-81 (FAA)

CHICAGO MIDWAY INTL (MDW)

CHICAGO, ILLINOIS

**TOP ALTITUDE:
3000**

RNAV 1 - GPS from ACITO, BACEN, CMSKY, DENNT, EARN, LEWKE, PEKUE, PMPKN, RAYNR.
RADAR required.
DME required (I-MXT when Rwy 31C in use, I-MDW when Rwy 13C in use).

D-ATIS 132.75
CLNC DEL 124.625
CPDLC
GND CON 118.075
MIDWAY TOWER 135.2 269.125
CHICAGO DEP CON 128.2 353.875

BADGER
116.4 BAE
Chan 111

SIMMN

PMPKN

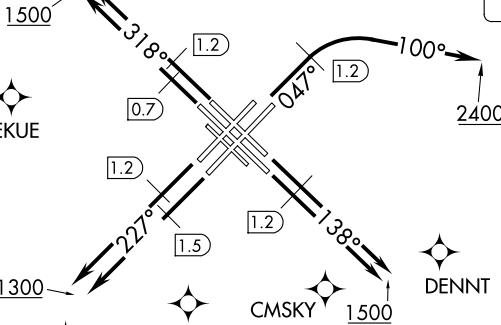
RAYNR

PETTY

GIPPER
115.4 GU
Chan 101

MSA CGT 25 NM
3400

090° 270°
2800



IOWA CITY
116.2 IOW
Chan 109

TAKEOFF MINIMUMS:
Rwys 4L/R, 13C/L,
22L/R, 31C/R:
Standard.

ROBERTS
116.8 RBS
Chan 115

NOTE: All Turbo-Jet departures, in all directions, accelerate to 250K immediately upon entering or outside the lateral confines of ORD Class B airspace, then maintain 250K until advised by ATC.

NOTE: Chart not to scale.

DEPARTURE ROUTE DESCRIPTION

TAKEOFF RUNWAYS 4L/R: Assigned headings 360° (CW) thru 080° climb on heading 047° to 1.2 DME, then continue climbing right turn heading 100° to 2400, thence . . .

TAKEOFF RUNWAYS 13C/L: Climb on heading 138° to 1.2 DME, then continue climb to 1500, thence . . .

TAKEOFF RUNWAY 22L: Climb on heading 227° to 1.5 DME, then continue climb to 1300, thence . . .

TAKEOFF RUNWAY 22R: Climb on heading 227° to 1.2 DME, then continue climb to 1300, thence . . .

TAKEOFF RUNWAY 31C: Climb on heading 318° to 0.7 DME, then continue climb to 1500, thence . . .

TAKEOFF RUNWAY 31R: Climb on heading 318° to 1.2 DME, then continue climb to 1500, thence . . .

ALL AIRCRAFT: Expect RADAR vectors to first enroute fix. Maintain 3000 or assigned lower altitude. Expect clearance to requested altitude/flight level 10 (ten) minutes after departure. Complete initially assigned turn within 4 DME.

. . . on tower assigned heading/vector to assigned altitude.

CICERO THREE DEPARTURE

CHICAGO, ILLINOIS

CHICAGO MIDWAY INTL (MDW)