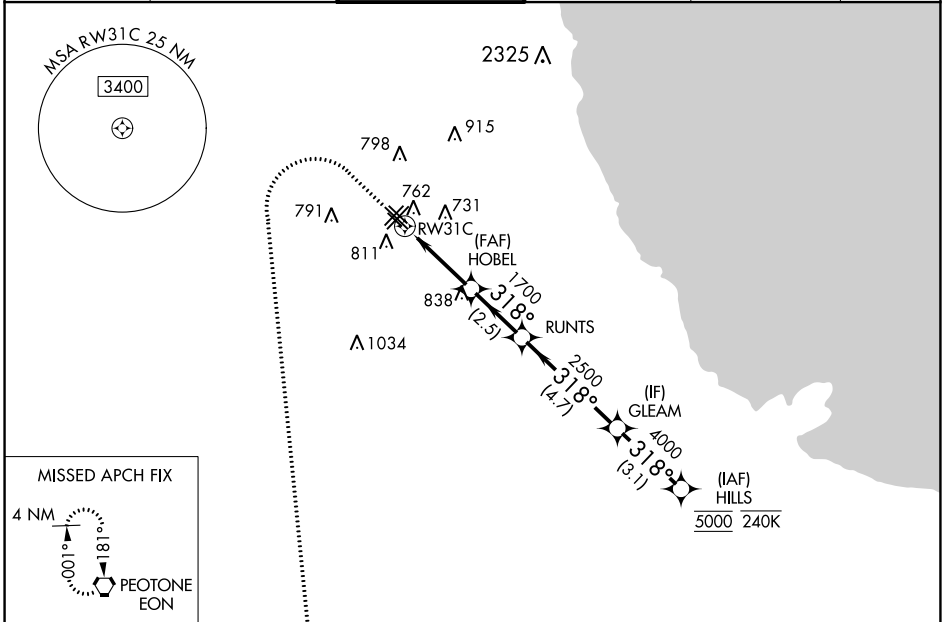


WAAS CH 50512 W31A	APP CRS 318°	Rwy Idg TDZE 613 Apt Elev 620
--	------------------------	---

RNAV (GPS) Z RWY 31C

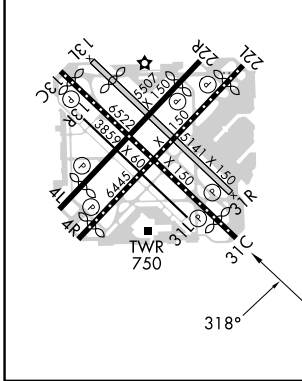
CHICAGO MIDWAY INTL (MDW)

RNP APCH - GPS. RADAR required.		MISSED APPROACH: Climb to 1100 then climbing left turn to 2600 direct EON VORTAC and hold.			
<p>▼ Circling Rwy 31R NA at night. Rwy 31C helicopter visibility reduction below RVR 4000 NA. ▲ For uncompensated Baro-VNAV systems, LNAV/VNAV NA below -19°C or above 54°C.</p>					
D-ATIS 132.75	CHICAGO APP CON 128.2 353.875	MIDWAY TOWER 135.2 269.125	GND CON 118.075	CLNC DEL 124.625	CPDLC



ELEV 620	D	TDZE 613
-----------------	----------	-----------------

HIRL Rws 4R-22L and 13C-31C
MIRL Rws 4L-22R, 13L-31R, and 13R-31L
REIL Rws 4R, 22L, and 31C
RLS Rws 13C and 31C



1100	2600	EON	VGSI and RNAV glidepath not coincident (VGSI Angle 3.00/TCH 63).		
RW31C		HOBEL 1700	RUNTS 2500	GLEAM 4000	HILLS 5000
1.1 NM to RW31C		1.1	2.2	2.5	4.7
CATEGORY		A	B	C	D
LPV DA	DA	863/40	250 (300-¾)		
LNAV/VNAV DA	DA	953/50	340 (400-1)		
LNAV MDA	MDA	1020/55	407 (400-1)	1020/60	407 (400-1¼)
C CIRCLING	CIRCLING	1120-1	500 (500-1)	1340-2	1340-2¼
				720 (800-2)	720 (800-2¼)

EC-3, 13 JUN 2024 to 11 JUL 2024

EC-3, 13 JUN 2024 to 11 JUL 2024