

LOC/DME I- LUK	APP CRS	Rwy Idg	6101
110.9	205°	TDZE	475
Chan 46		Apt Elev	483

ILS or LOC RWY 21L

CINCINNATI MUNI/LUNKEN FLD (LUK)

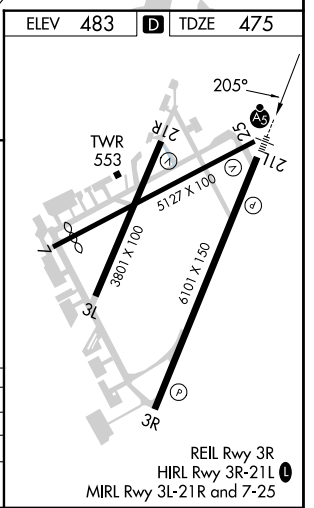
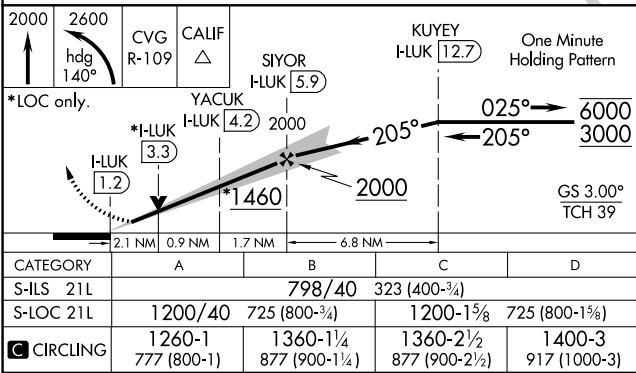
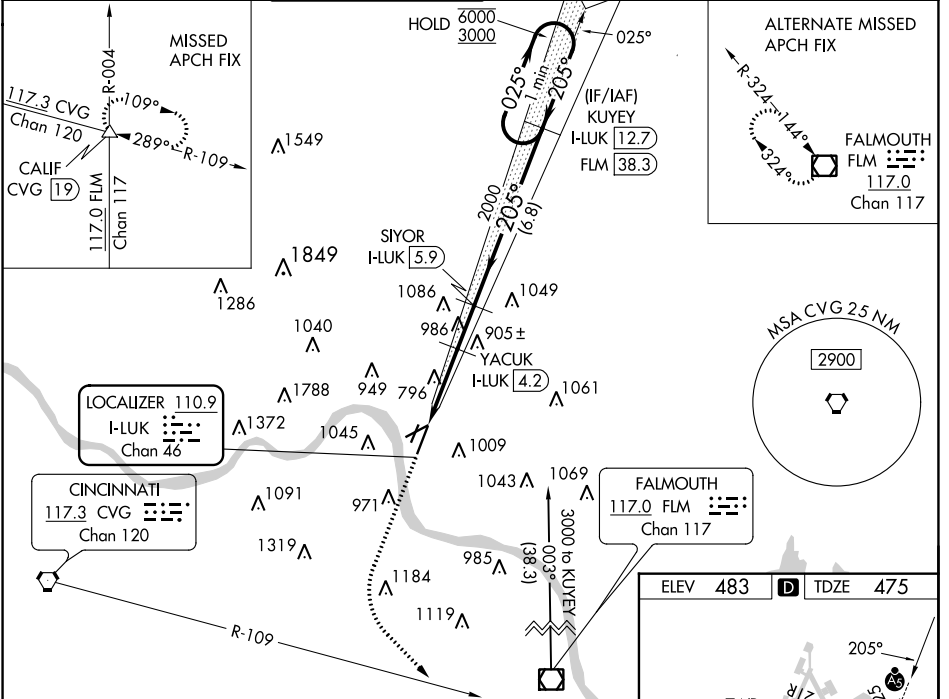
DME required.

Circle NA for Cat D northwest of Rws 7 and 21R. Rwy 21L helicopter visibility reduction below 3/4 SM NA. VDP NA when using Cincinnati/Northern Kentucky Intl altimeter setting. When local altimeter setting not received, use Cincinnati/Northern Kentucky 21L altimeter setting and increase all DA 86 feet and all MDA 100 feet; increase S-LOC 21L Cat A/B visibility to RVR 5500 and Cat C/D to 2 SM. For inop ALS when using Cincinnati/Northern Kentucky Intl altimeter setting and increase S-ILS 21L all Cats visibility to RVR 6000 and S-LOC 21L Cat A to RVR 5500 and Cat C/D to 2 1/2 SM. For inop ALS, increase S-LOC 21L Cat A/B visibility to RVR 5500, and Cat C/D to 2 SM. Circling Rwy 3L, 7, 21R NA at night.



MISSED APPROACH:
Climb to 2000 then climbing left turn to 2600 on heading 140° and CVG VORTAC R-109 to CALIF/CVG 19 DME and hold.

ATIS 123.6	CINCINNATI APP CON 121.0 254.25	LUNKEN TOWER * 118.7 (CTAF) 0 257.8	GND CON 121.9	CLNC DEL 121.9	CLNC DEL 124.9 (when twr closed)	UNICOM 122.95
----------------------	---	---	-------------------------	--------------------------	---	-------------------------



EC-2, 13 JUN 2024 to 11 JUL 2024

EC-2, 13 JUN 2024 to 11 JUL 2024