

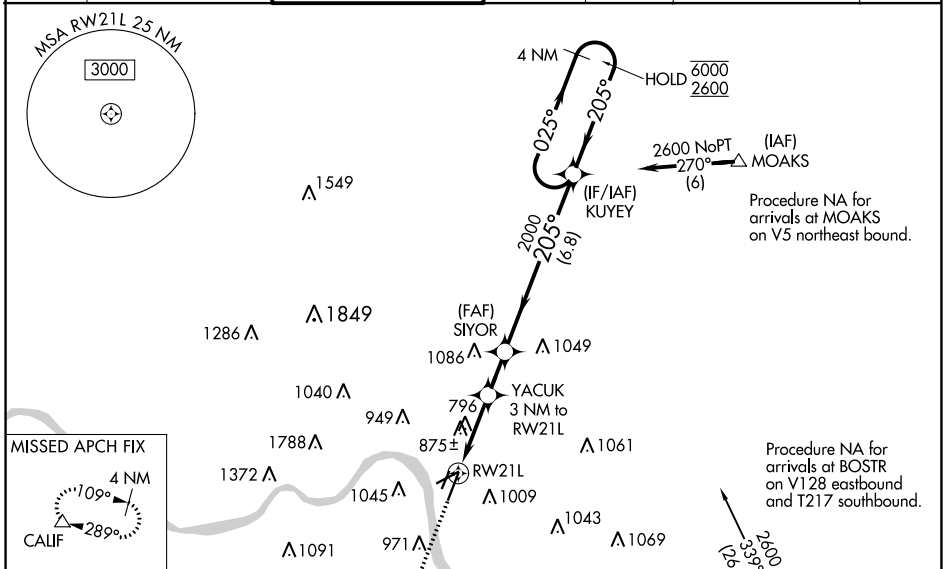
WAAS CH 42511 W21A	APP CRS 205°	Rwy Idg TDZE Apt Elev	6101 475 483
--	------------------------	-----------------------------	---

RNAV (GPS) RWY 21L

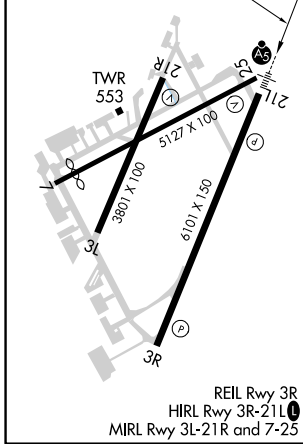
CINCINNATI MUNI/LUNKEN FLD (LUK)

RNP APCH. ▼ Circling NA for Cat D north of Rwy 7 and northwest of Rwy 21R. Circling Rwy 3L, 7, 21R NA at night. Rwy 21L helicopter visibility reduction below 3/4 SM NA. Inop table does not apply to LNAV/VNAV. For uncompensated Baro-VNAV systems, LNAV/VNAV NA below -15°C or above 54°C. For inop ALS, increase LPV all Cats visibility to RVR 4500, LNAV Cats A/B visibility to RVR 5500 and LNAV Cats C/D visibility to 2 SM.	MALSR 	MISSED APPROACH: Climb to 2500 direct WONAN and on track 130° to CALIF and hold, continue climb-in-hold to 2600.
---	-----------	---

ATIS 123.6	CINCINNATI APP CON 121.0 254.25	LUNKEN TOWER ★ 118.7 (CTAF) 257.8	GND CON 121.9	CLNC DEL 121.9	CLNC DEL 124.9 (when twr closed)	UNICOM 122.95
----------------------	---	---	-------------------------	--------------------------	---	-------------------------



ELEV 483	D	TDZE 475
----------	---	----------



2500 WONAN	Ir 130°	CALIF	4 NM Holding Pattern
*LNAV only.		YACUK 3 NM to RW21L	KUYEY
RW21L	*2.1 NM to RW21L	SIYOR 2000	6000/2600
	*1460		2000
			GP 3.00° TCH 39

CATEGORY	A	B	C	D
LPV DA		756/40	281 (300-3/4)	
LNAV/VNAV DA		1217-2 1/4	742 (800-2 1/4)	
LNAV MDA	1200/40	725 (800-3/4)	1200-1 5/8 725 (800-1 5/8)	
CIRCLING	1300-1 1/4 817 (900-1 1/4)	1360-1 1/4 877 (900-1 1/4)	1360-2 1/2 877 (900-2 1/2)	1360-2 3/4 877 (900-2 3/4)

EC-2, 13 JUN 2024 to 11 JUL 2024

EC-2, 13 JUN 2024 to 11 JUL 2024