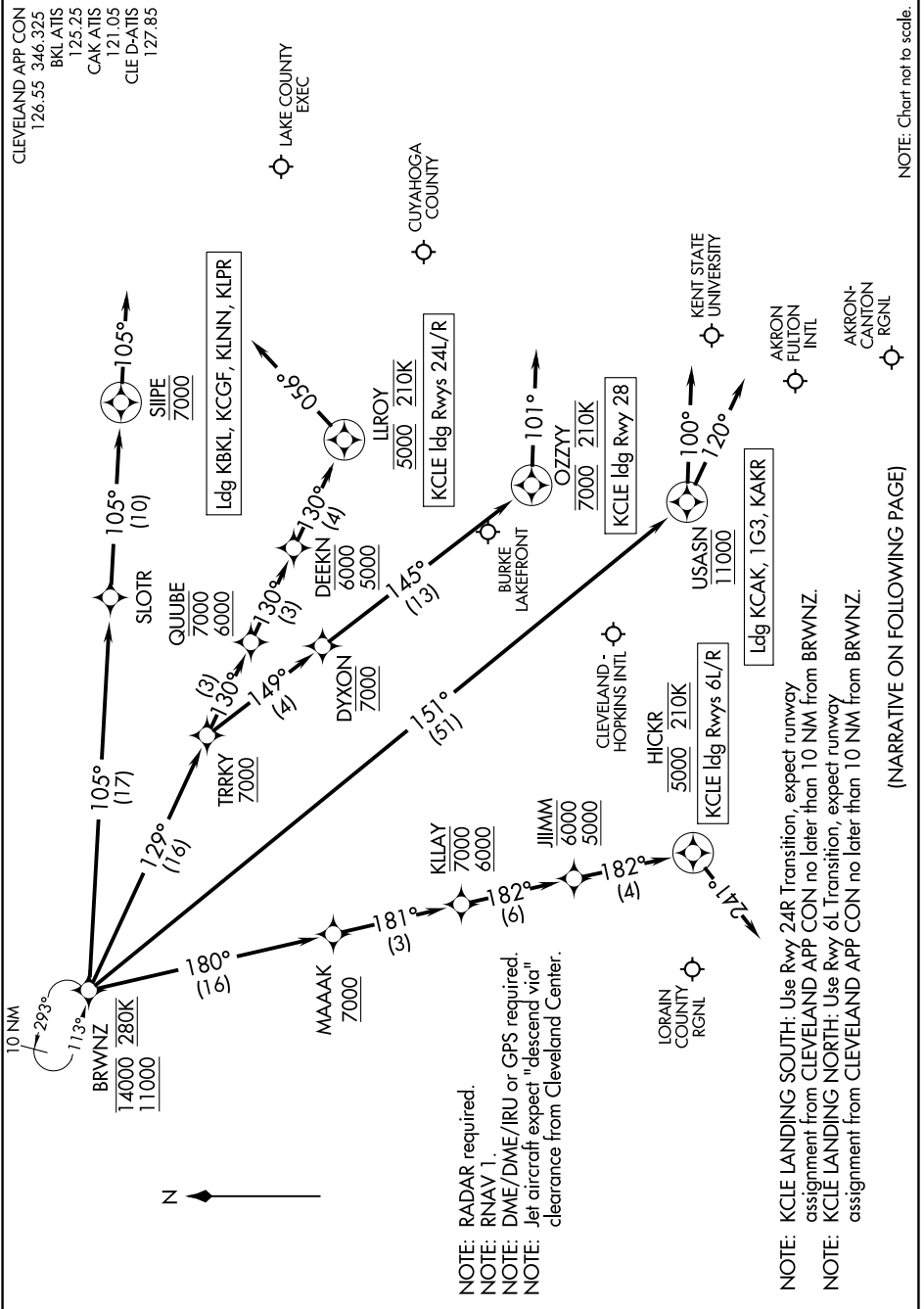


# BRWNZ FOUR ARRIVAL (RNAV) Arrival Routes

CLEVELAND, OHIO

EC-2, 13 JUN 2024 to 11 JUL 2024



NOTE: Chart not to scale.

NOTE: RADAR required.  
 NOTE: RNAV 1.  
 NOTE: DME/DME/IRU or GPS required.  
 NOTE: Jet aircraft expect "descend via" clearance from Cleveland Center.

NOTE: KCLE LANDING SOUTH: Use Rwy 24R Transition, expect runway assignment from CLEVELAND APP CON no later than 10 NM from BRWNZ.  
 NOTE: KCLE LANDING NORTH: Use Rwy 6L Transition, expect runway assignment from CLEVELAND APP CON no later than 10 NM from BRWNZ.

(NARRATIVE ON FOLLOWING PAGE)

# BRWNZ FOUR ARRIVAL (RNAV) Arrival Routes

CLEVELAND, OHIO

EC-2, 13 JUN 2024 to 11 JUL 2024