

CLEVELAND, OHIO

AL-84 (FAA)

22139

LOC/DME I-CLE 111.9 Chan 56	APP CRS 058°	Rwy Idg 8029 TDZE 777 Apt Elev 799
--	------------------------	---

ILS RWY 6R (SA CAT II)

CLEVELAND-HOPKINS INTL (CLE)

From GROHL, HICKR, and RUHSH: RNAV 1-DME/DME/IRU or GPS required for procedure entry. Aircraft not DME/DME/IRU or GPS equipped - RADAR required for procedure entry. RNAV 1.

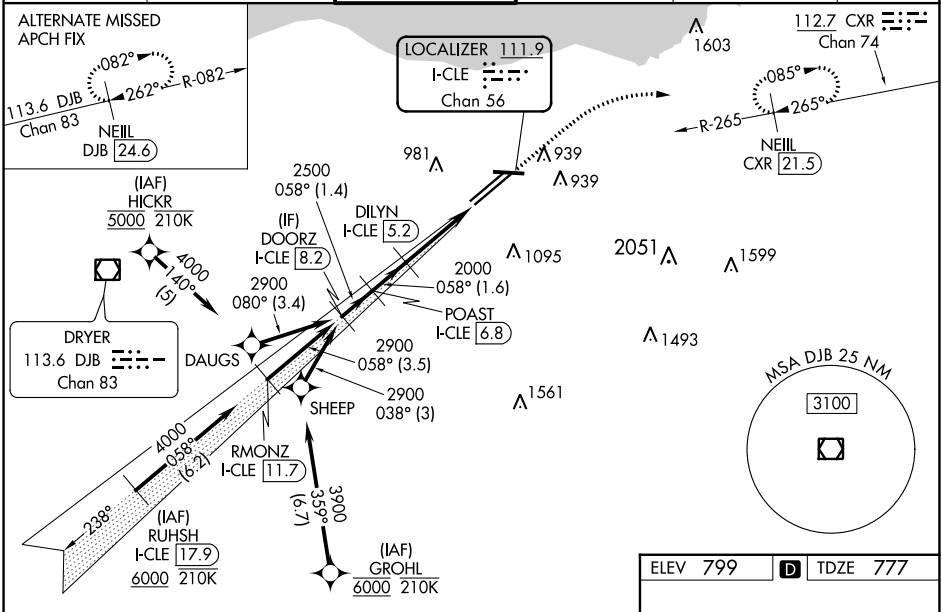


MISSED APPROACH: Climb to 1600 then climbing right turn to 3100 on CXR VOR/DME R-265 to NEILL/CXR 21.5 DME and hold.

DME required.

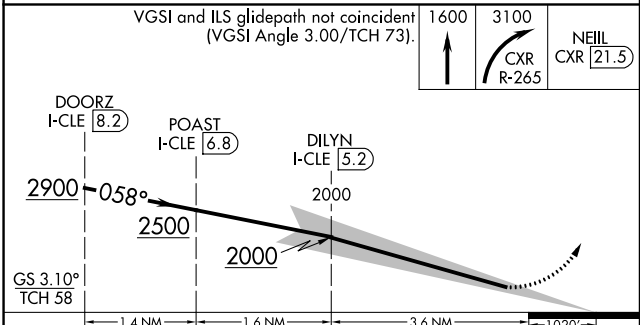
Simultaneous approach authorized. Simultaneous operations require use of vertical guidance; maintain last assigned altitude until established on glideslope. Reduced lighting: Requires specific OPSPEC, MSPEC, or LOA approval and use of autoland or HUD to touchdown.

D-ATIS ARR 127.85 DEP 132.375	CLEVELAND APP CON 126.55 346.325	CLEVELAND TOWER 124.5 273.45	GND CON 121.7 273.45	CLNC DEL 125.05 273.45	CPDLC
---	--	--	--------------------------------	----------------------------------	-------

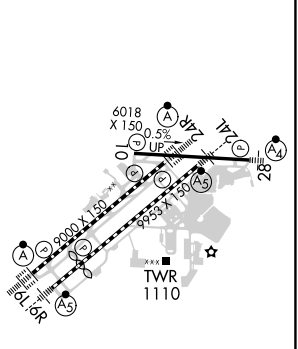


EC-2, 13 JUN 2024 to 11 JUL 2024

EC-2, 13 JUN 2024 to 11 JUL 2024



ELEV 799	D TDZE 777
----------	-------------------



CATEGORY	A	B	C	D
S-ILS 6R	RA 100/12 100 DA 877			

SA CATEGORY II ILS - SPECIAL AIRCREW & AIRCRAFT CERTIFICATION REQUIRED

REIL Rwy 10
TDZ/CL Rwy 6L, 6R, 24L and 24R
HIRL Rwy 6L-24R, 6R-24L and 10-28

CLEVELAND, OHIO
Amdt 22 24MAY18

41°25'N-81°51'W

CLEVELAND-HOPKINS INTL (CLE)

ILS RWY 6R (SA CAT II)