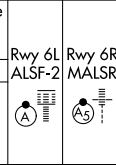


LOC/DME I-CLE <b>111.9</b> Chan 56	APP CRS <b>058°</b>	Rwy Idg TDZE Apt Elev	6R <b>8029</b> <b>777</b> <b>799</b>	6L <b>9000</b> <b>773</b> <b>799</b>
--	------------------------	-----------------------------	---	---

# ILS or LOC RWY 6R

CLEVELAND-HOPKINS INTL (CLE)

From GROHL, HICKR, and RUHSH: RNAV 1-DME/DME/IRU or GPS required for procedure entry. Aircraft not DME/DME/IRU or GPS equipped - RADAR required for procedure entry. RNAV 1.

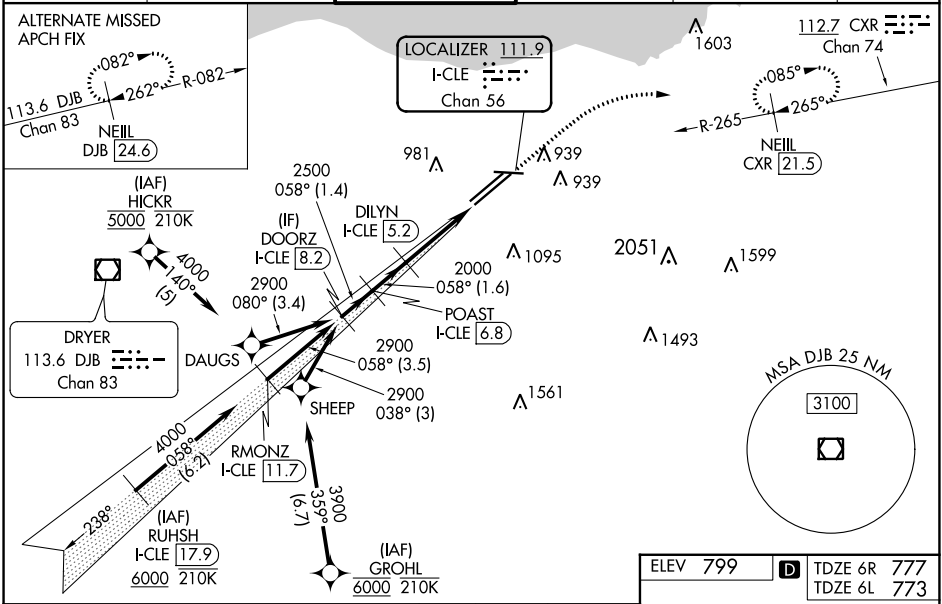


**MISSED APPROACH:**  
Climb to 1600 then climbing right turn to 3100 on CXR VOR/DME R-265 to NEILL/CXR 21.5 DME and hold.

DME required.

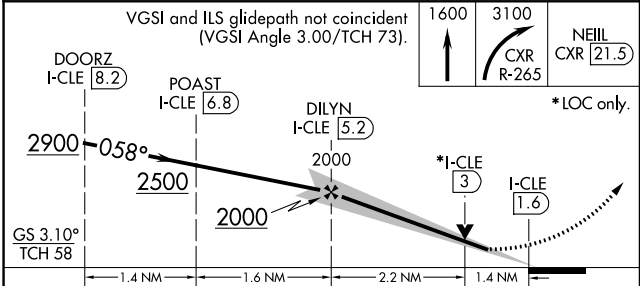
**▼** Circling Rwy 10 NA at night. Simultaneous approach authorized. Simultaneous operations require use of vertical guidance; maintain last assigned altitude until established on glideslope. Inop table does not apply to Sidestep 6L. For inop ALS, increase S-LOC 6R Cats C/D visibility to 1 1/8 SM.

D-ATIS ARR <b>127.85</b> DEP <b>132.375</b>	CLEVELAND APP CON <b>126.55 346.325</b>	CLEVELAND TOWER <b>124.5 273.45</b>	GND CON <b>121.7 273.45</b>	CLNC DEL <b>125.05 273.45</b>	CPDLC
---	--	--	--------------------------------	----------------------------------	-------



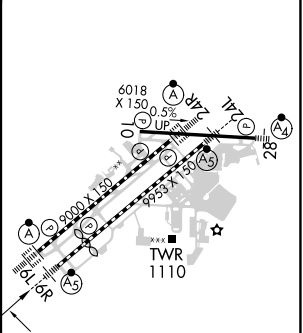
EC-2, 13 JUN 2024 to 11 JUL 2024

EC-2, 13 JUN 2024 to 11 JUL 2024



ELEV 799	<b>D</b> TDZE 6R 777
	TDZE 6L 773

CATEGORY	A	B	C	D
S-ILS 6R	977/18		200 (200-1/2)	
S-LOC 6R	1260/24	483 (500-1/2)	1260/50	483 (500-1)
SIDESTEP 6L	1260/55	487 (500-1)	1260-1 1/2 487 (500-1 1/2)	1260-2 487 (500-2)
<b>C</b> CIRCLING	1420-1	621 (700-1)	1420-1 3/4 621 (700-1 3/4)	1420-2 621 (700-2)



REIL Rwy 10  
TDZ/CL Rwy 6L, 6R, 24L and 24R  
HIRL Rwy 6L-24R, 6R-24L and 10-28