


WAAS CH 45526 W05A	APP CRS 052°	Rwy Idg TDZE Apt Elev	7001 228 236
--	------------------------	-----------------------------	---

RNAV (GPS) RWY 5

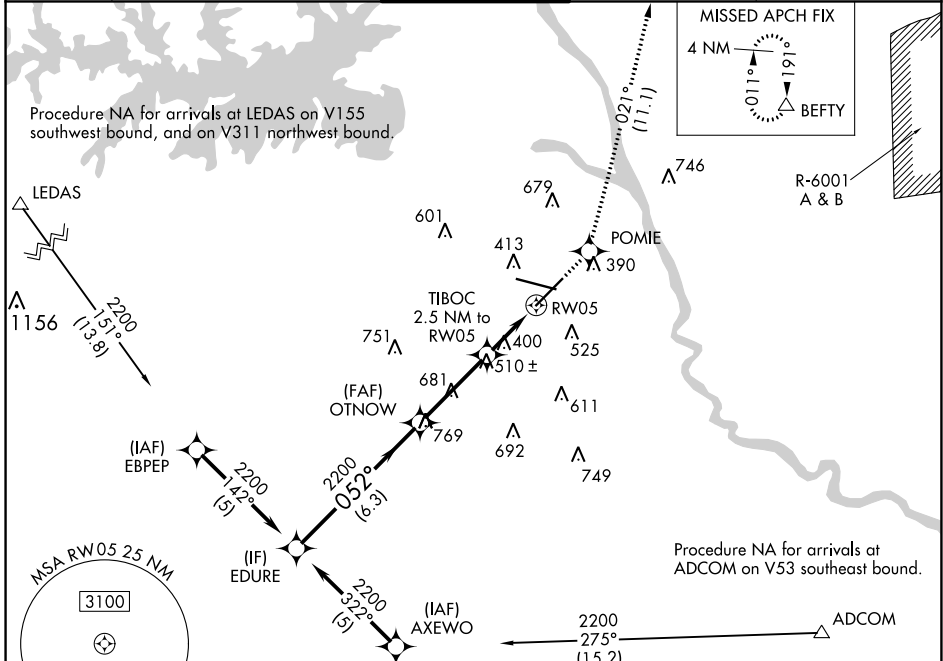
COLUMBIA METRO (CAE)

▽ For uncompensated Baro-VNAV systems, LNAV/VNAV NA below -15°C (5°F) or above 48°C (118°F). DME/DME RNP-0.3 NA.
▲ **RVR 1800 authorized with use of FD or AP or HUD to DA.

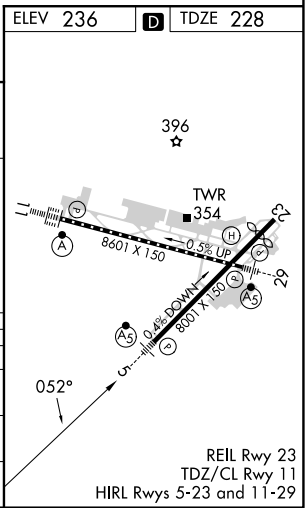
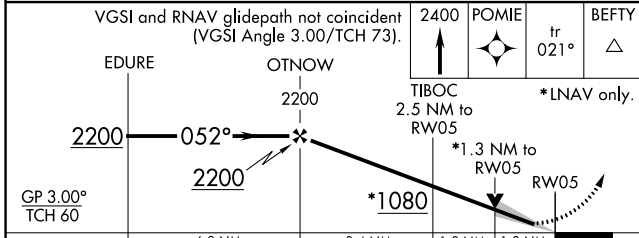
MALSR 

MISSED APPROACH: Climb to 2400 direct POMIE and on track 021° to BEFTY and hold.

ATIS 120.15	COLUMBIA APP CON 133.4 285.6 (290°-109°) 124.15 338.2 (110°-289°)	COLUMBIA TOWER 119.5 257.8	GND CON 121.9 348.6	CLNC DEL 119.75
-----------------------	---	--------------------------------------	-------------------------------	---------------------------



ELEV 236	D TDZE 228
----------	-------------------



CATEGORY	A	B	C	D
LPV DA **		428/24	200 (200-½)	
LNAV/VNAV DA		638/50	410 (500-1)	
LNAV MDA	700/24	472 (500-½)	700/40 472 (500-¾)	700/50 472 (500-1)
CIRCLING	740-1 504 (600-1)	860-1 624 (700-1)	1040-2¼ 804 (900-2¼)	1040-2½ 804 (900-2½)

SE-2, 13 JUN 2024 to 11 JUL 2024

SE-2, 13 JUN 2024 to 11 JUL 2024