

COLUMBUS FOUR DEPARTURE

AL-91 [USAF]

COLUMBUS, MISSISSIPPI

ATIS ★ 115.2 273.5
 CLNC DEL ★
 269.55
 GND CON ★
 121.9 275.8
 TOWER ★
 126.65 379.925
 DEP CON ★
 134.55 350.3

RADAR required

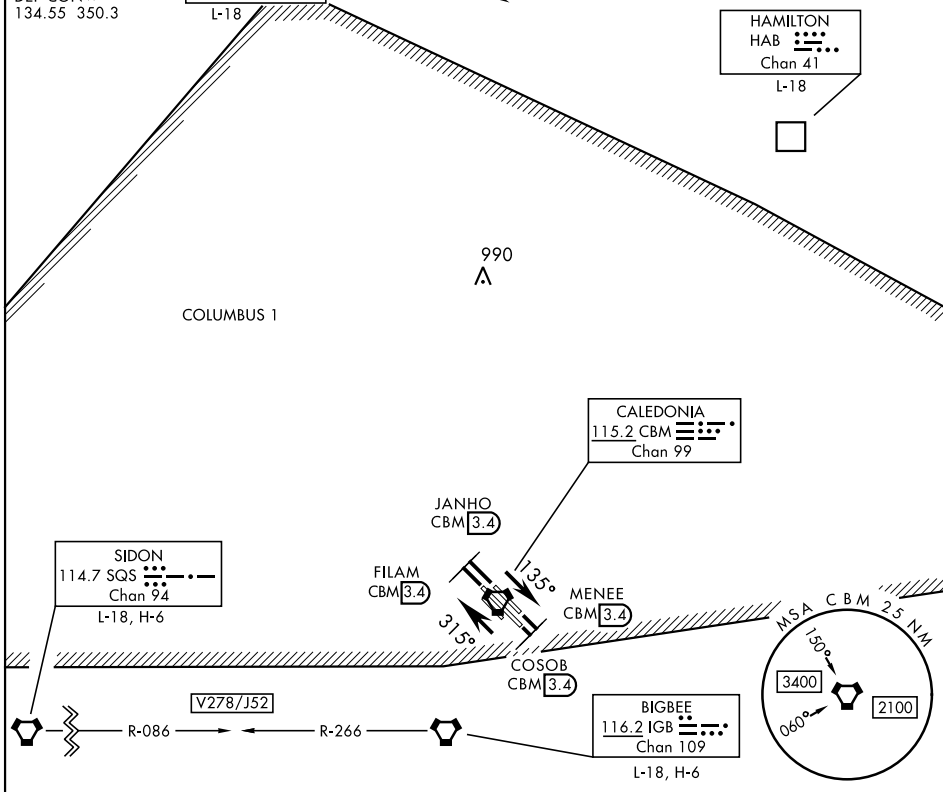
Rwy	Knots	60	120	180	240	300	360
13C	V/V(fpm)	210	420	630	840	1050	1260
13L	V/V(fpm)	220	440	660	880	1100	1320

Minimum Climb Rate to 700

1020

HOLLY SPRINGS
 112.4 HLI
 Chan 71
 L-18

HAMILTON HAB
 Chan 41
 L-18



SC-4, 13 JUN 2024 to 11 JUL 2024

SC-4, 13 JUN 2024 to 11 JUL 2024

DEPARTURE ROUTE DESCRIPTION

NOTE: Rwy 13/31C departure will be towards a raised MA-1A barrier approximately 110' into the overrun and 4' high.

TAKEOFF RWY 13C: Climb on heading 135° to intercept CBM VORTAC R-138, direct COSOB (CBM R-138/3.4 DME), then via ATC instructions.

TAKEOFF RWY 13L: Climb on heading 135° to intercept CBM VORTAC R-132, direct MENE (CBM R-132/3.4 DME), then via ATC instructions.

TAKEOFF RWY 31C: Climb on heading 315° to intercept CBM VORTAC R-312, direct FILAM (CBM R-312/3.4 DME), then via ATC instructions.

TAKEOFF RWY 31R: Climb heading 315° to intercept CBM VORTAC R-318, direct JANHO (CBM R-318/3.4 DME), then via ATC instructions.

COLUMBUS FOUR DEPARTURE

COLUMBUS, MISSISSIPPI
 COLUMBUS AFB (KCBM)