

COLUMBUS, MISSISSIPPI

HI-ILS or LOC Z RWY 31C

LOC I-TBB 108.7	APCH CRS 315°	Rwy Ldg TDZE Arprt Elev	31C 12,004 213 218	31R 8001 218 218
---------------------------	-------------------------	-------------------------------	--	--

AL-91 [USAF]

COLUMBUS AFB (KCBM)

* When ALS inop, increase RVR to 40, vis to 3/4 mile.
 ** When ALS inop, increase vis to 1 1/4 mile.
 † When ALS inop, increase vis to 1 3/8 mile.



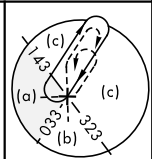
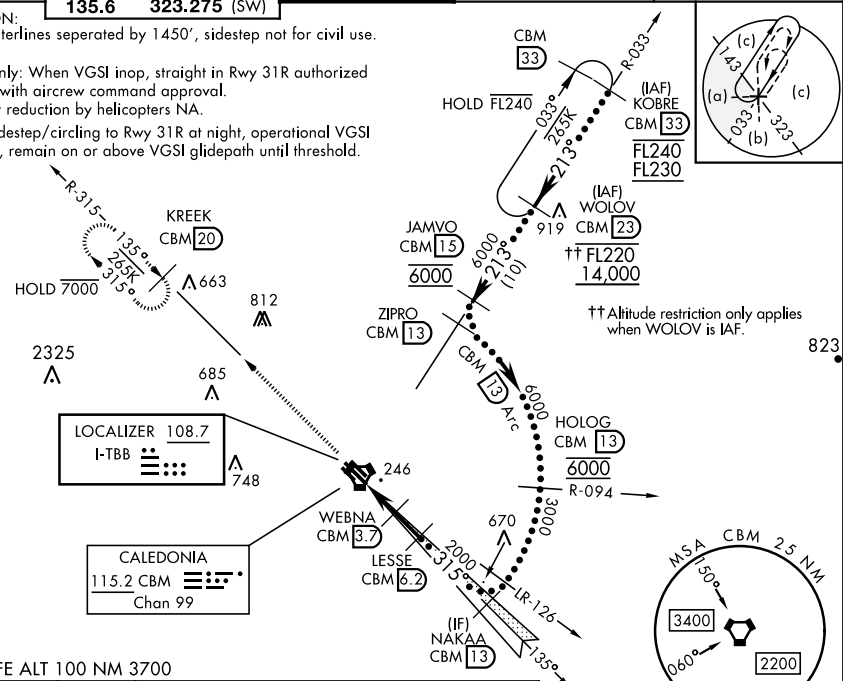
MISSED APPROACH: Climb heading 315° to intercept the VOR/TAC CBM R-315 outbound to KREEK (CBM R-315/20) and hold. Maintain 4000.

ATIS ★ 115.2 273.5	APP CON ★ 126.075 239.25 (N) 134.55 350.3 (SE) 135.6 323.275 (SW)	TOWER ★ 126.65 379.925	GND CON ★ 121.9 275.8	CLNC DEL ★ 269.55
------------------------------	---	----------------------------------	---------------------------------	-----------------------------

*** CAUTION:
 Rwy centerlines separated by 1450', sidestep not for civil use.

 USAF Only: When VGSI inop, straight in Rwy 31R authorized at night with aircrew command approval. Visibility reduction by helicopters NA.

 When sidestep/circling to Rwy 31R at night, operational VGSI required, remain on or above VGSI glidepath until threshold.

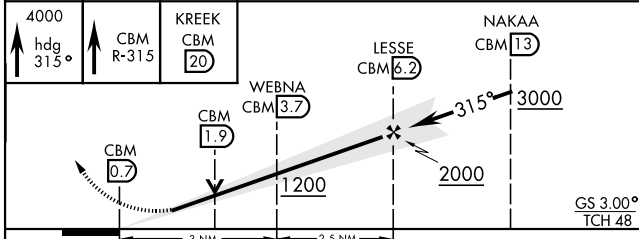


†† Altitude restriction only applies when WOLOV is IAF.

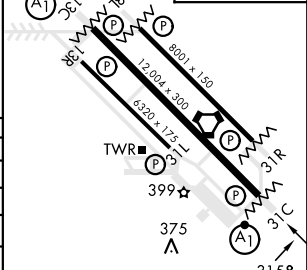
SC-4, 13 JUN 2024 to 11 JUL 2024

SC-4, 13 JUN 2024 to 11 JUL 2024

EMERG SAFE ALT 100 NM 3700



ELEV 218	TDZE 31C 213
	TDZE 31R 218



CATEGORY	C	D	E
S-ILS 31C*	413/24	200	(200-1/2)
S-LOC 31C**	640/40	427	(500-3/4)
SIDESTEP *** RWY 31R	640-1/4	422	(500-1/4)
C CIRCLING	740-1 1/2 522 (600-1 1/2)	880-2 662 (700-2)	1240-3 1022 (1100-3)
LOCAL ALTIMETER, WITHOUT LAST STEPDOWN FIX			
S-LOC 31C †	720/55	507	(600-1)
SIDESTEP *** RWY 31R	760-1 1/8	542	(600-1/8)
C CIRCLING	760-1 1/8 542 (600-1 1/8)	880-2 662 (700-2)	1240-3 1022 (1100-3)

MIRL Rwy 13R-31L					
MIRL Rwy 13C-31C, 13L-31R					
FAF to MAP 5.5 NM					
Knots	120	140	160	180	200
Min:Sec	2:45	2:21	2:04	1:50	1:39

COLUMBUS, MISSISSIPPI
Amdt 2 21APR22

33°39'N-88°27'W

COLUMBUS AFB (KCBM)

HI-ILS or LOC Z RWY 31C