

COLUMBUS, MISSISSIPPI

RNAV (GPS) RWY 13C

WAAS CH 53183 W13A	APCH CRS 135°	Rwy ldg 12,004	TDZE 196
		Arpt Elev 218	

AL-91 (USAF)

COLUMBUS AFB (KCBM)

RNP APCH

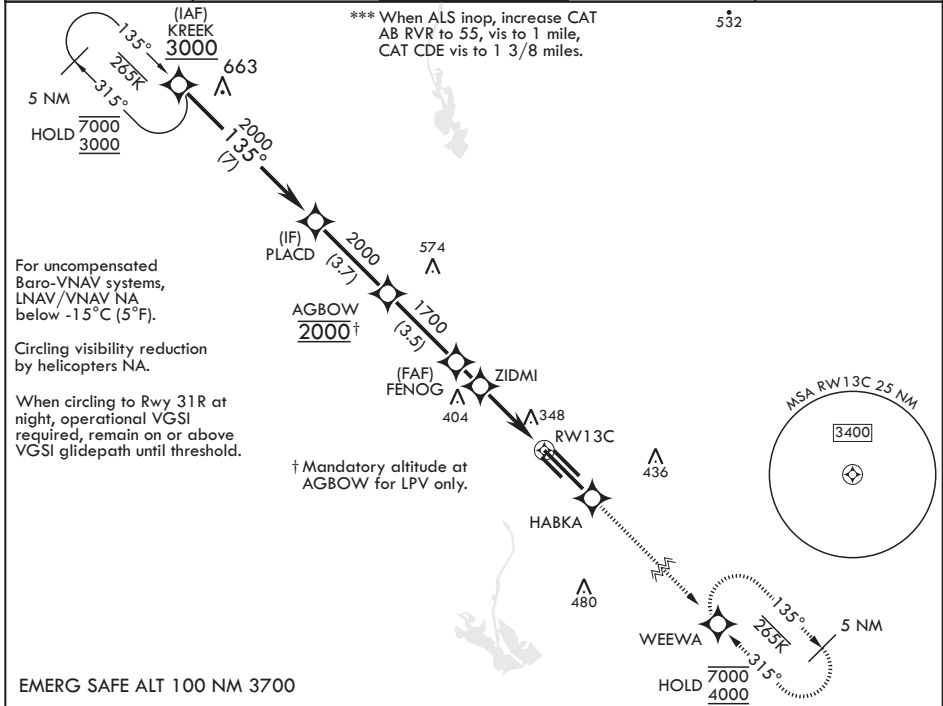
ALSF-1

MISSED APPROACH: Climb to 4000 direct HABKA, direct track to WEEWA and hold as published.

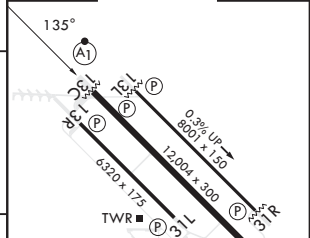
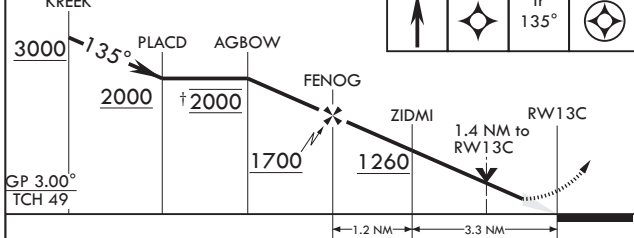
▼ * When ALS inop increase RVR to 40, vis to ¼ mile.
** When ALS inop, increase vis to 1 3/8 miles.



ATIS* 115.2 273.5	APP CON* 126.075 239.25 N 134.55 350.3 SE 135.6 323.275 SW	TOWER* 126.65 379.925	GND CON* 121.9 275.8	CLNC DEL* 269.55
----------------------	---	--------------------------	-------------------------	---------------------



KREEK	4000	HABKA	tr 135°	WEEWA	ELEV 218	TDZE 196
-------	------	-------	---------	-------	----------	----------



CATEGORY	A	B	C	D	E
LPV DA*	396/24		200	(200-½)	
LNAV/VNAV DA**	666/50		470	(500-1)	
LNAV MDA***	680/24	484 (500-½)	680/50	484	(500-1)
CIRCLING	700-1	720-1	740-1½	880-2	1240-3
	482 (500-1)	502 (600-1)	522 (600-½)	662 (700-2)	1022 (1100-3)



COLUMBUS, MISSISSIPPI

33°39'N - 88°27'W

COLUMBUS AFB (KCBM)

Amdt 4 07SEP23

RNAV (GPS) RWY 13C

SC-4, 13 JUN 2024 to 11 JUL 2024

SC-4, 13 JUN 2024 to 11 JUL 2024