

WAAS CH 82529 W03A	APP CRS 026°	Rwy Idg TDZE 1503 Apt Elev 1503
--	------------------------	---

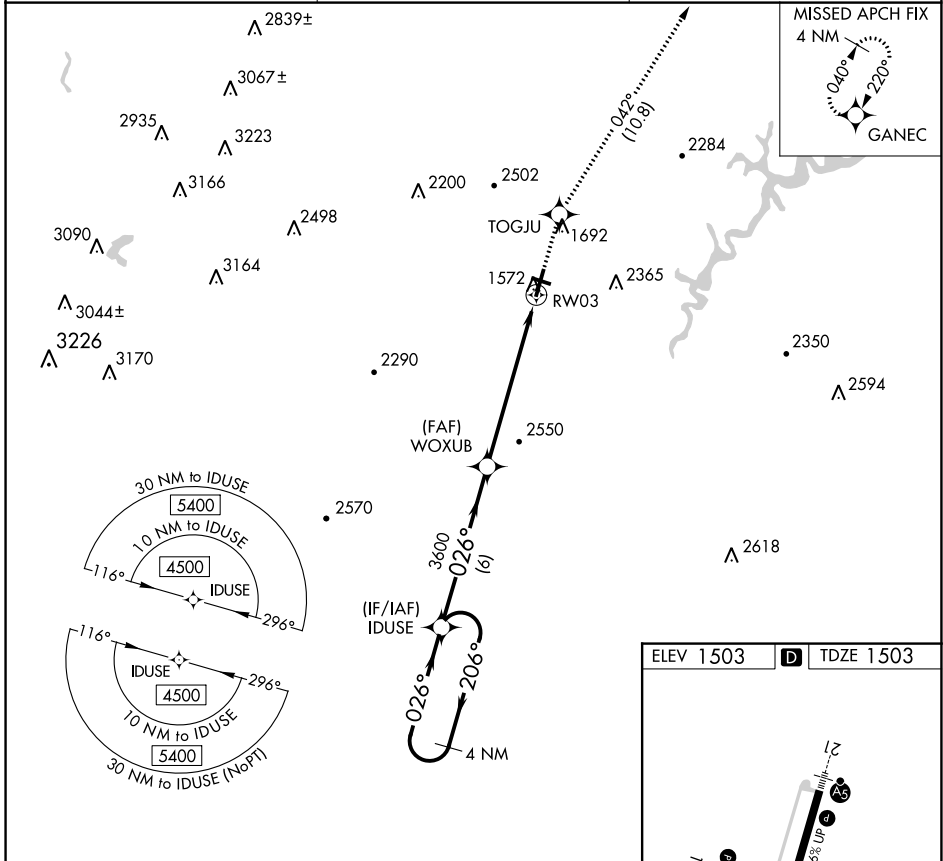
RNAV (GPS) Z RWY 3

ALTOONA/BLAIR COUNTY (A00)

▽ Rwy 3 helicopter visibility reduction below $\frac{3}{4}$ SM NA. DME/DME RNP-0.3 NA. When local altimeter setting not received, use Bedford County altimeter setting and increase all DA 84 feet, and increase all visibilities $\frac{3}{8}$ mile.

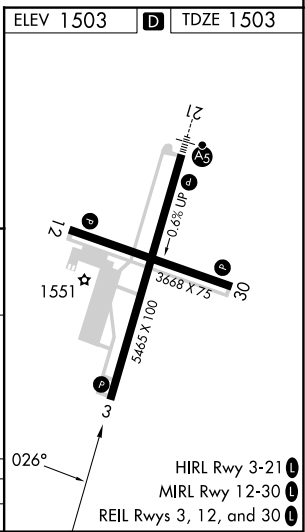
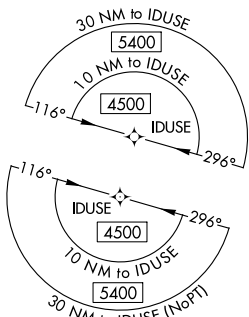
MISSED APPROACH: Climb to 5000 direct TOGJU and on track 042° to GANEC and hold, continue climb-in-hold to 5000.

ASOS 127.125	JOHNSTOWN APP CON ★ 121.2 299.2	CTAF 123.60
------------------------	---	-----------------------



NE-4, 13 JUN 2024 to 11 JUL 2024

NE-4, 13 JUN 2024 to 11 JUL 2024



VGSi and RNAV glidepath not coincident (VGSi Angle 3.00/TCH 43).				5000	TOGJU	tr 042°	GANEC
4 NM Holding Pattern	IDUSE	WOXUB	RW03				
4500 ← 206°	→ 026°	3600					
GP 3.00°	TCH 55	3600					
		6 NM	6.4 NM				
CATEGORY	A	B	C	D			
LPV DA	1828-1		325 (400-1)				