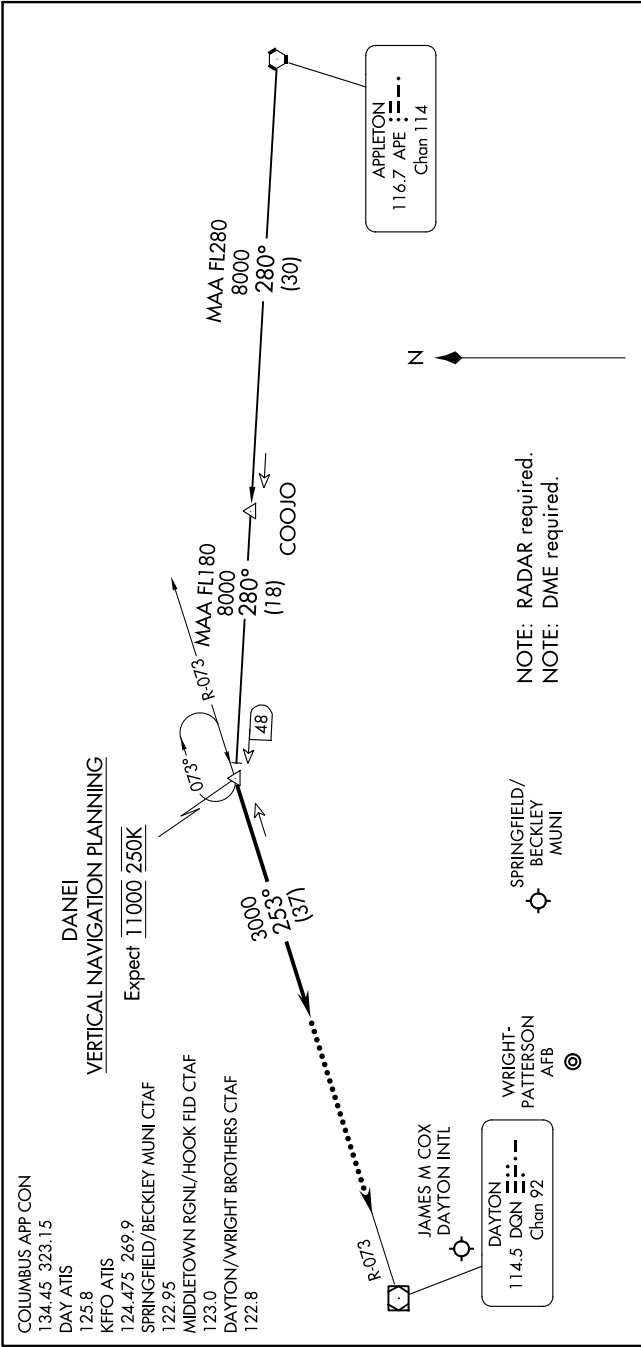


EC-2, 13 JUN 2024 to 11 JUL 2024



APPLETON TRANSITION (APE.DANEI3): From over APE VORTAC on APE R-280 to DANEI. Thence....

....From over DANEI on heading 253°. Expect RADAR vectors to final approach course.

LOST COMMUNICATIONS:

In the event of lost communications: At DANEI, proceed direct DQN VOR/DME maintain 3000' until DQN VOR/DME.

NOTE: Chart not to scale.

EC-2, 13 JUN 2024 to 11 JUL 2024