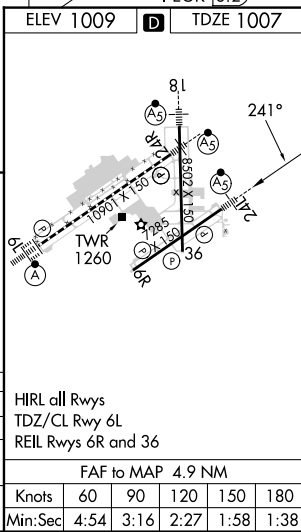
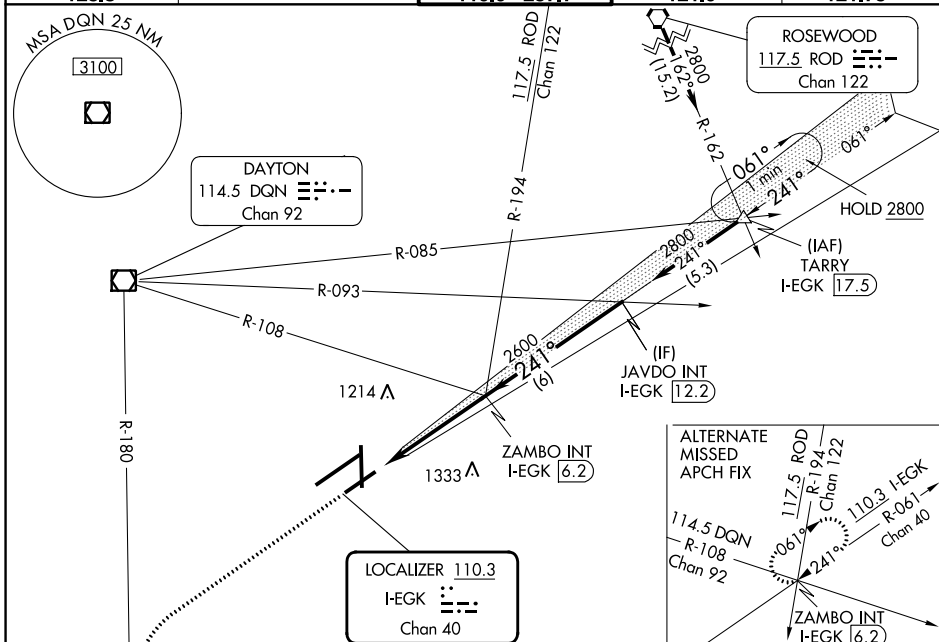


LOC I-EGK <b>110.3</b> Chan 40	APP CRS <b>241°</b>	Rwy ldg TDZE Apt Elev <b>7001</b> <b>1007</b> <b>1009</b>
--------------------------------------	------------------------	--

# ILS or LOC RWY 24L

JAMES M COX DAYTON INTL (DAY)

DME required.		MALSR	MISSED APPROACH: Climb to 3000 on heading 241° and DQN R-180 to MIMMS/DQN 18 DME and hold.	
Simultaneous approach authorized. # RVR 1800 authorized with use of FD or AP or HUD to DA.				
ATIS <b>125.8</b>	COLUMBUS APP CON <b>134.45 323.15</b>	DAYTON TOWER <b>119.9 257.7</b>	GND CON <b>121.9</b>	CLNC DEL <b>121.75</b>



3000	DQN R-180	MIMMS DQN [18]	VGSI and ILS glidepath not coincident (VGSI Angle 3.00/TCH 54).	
hdg 241°			ZAMBO INT I-EGK [6.2]	JAVDO INT I-EGK [12.2]
*LOC only.		*I-EGK [2.6]	2600	2800
			GS 3.00° TCH 50	
	1.2 NM	3.7 NM	6 NM	
CATEGORY	A	B	C	D
S-ILS 24L #	1207/24		200 (200-½)	
S-LOC 24L	1440/24 433 (500-½)		1440/40 433 (500-¾)	
CIRCLING	1580-1 571 (600-1)		1580-1½ 631 (700-2)	