

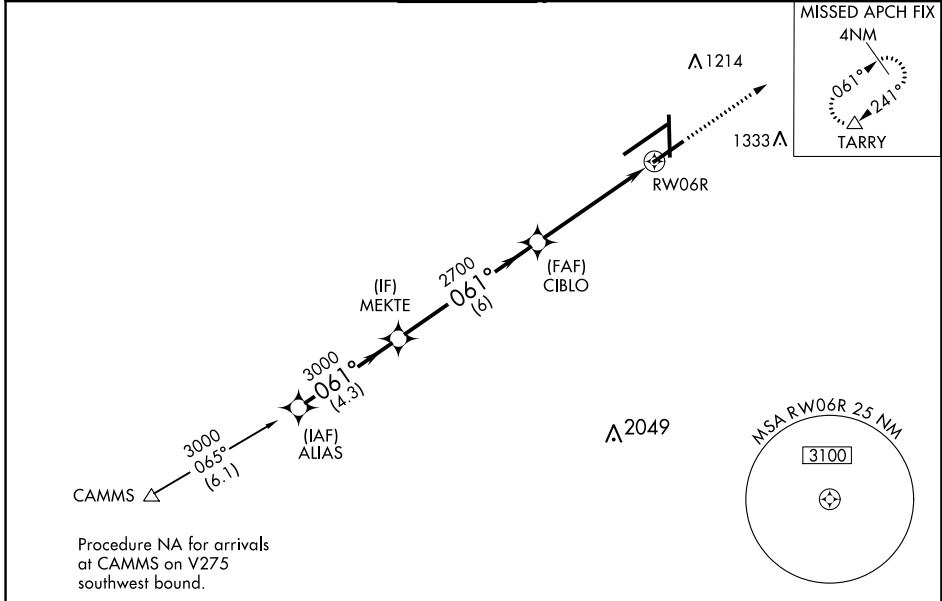
WAAS CH <b>90414</b> <b>W06B</b>	APP CRS <b>061°</b>	Rwy Idg TDZE Apt Elev	<b>7001</b> <b>1009</b> <b>1009</b>
--	------------------------	-----------------------------	---

# RNAV (GPS) RWY 6R

JAMES M COX DAYTON INTL (DAY)

RNP APCH - GPS.	<p>▼ For uncompensated Baro-VNAV systems, LNAV/VNAV NA below -19°C or above 54°C. Rwy 6R helicopter visibility reduction below 3/4 SM NA. Simultaneous approach authorized. LNAV procedure NA during simultaneous operations. Use of FD or AP required during simultaneous operations.</p>	MISSED APPROACH: Climb to 3000 direct TARRY and hold.
-----------------	--	---

ATIS <b>125.8</b>	COLUMBUS APP CON <b>134.45 323.15</b>	DAYTON TOWER <b>119.9 257.7</b>	GND CON <b>121.9</b>	CLNC DEL <b>121.75</b>
----------------------	--	------------------------------------	-------------------------	---------------------------

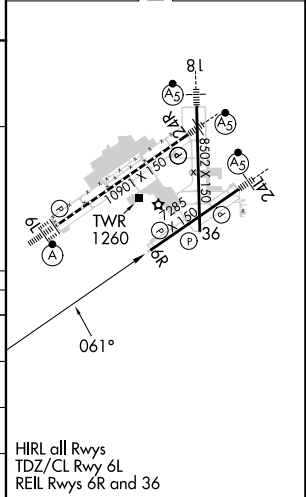


Procedure NA for arrivals at CAMMS on V275 southwest bound.

ELEV 1009	<b>D</b>	TDZE 1009
-----------	----------	-----------

VGSI and RNAV glidepath not coincident (VGSI Angle 3.00/TCH 50).

ALIAS	MEKTE	CIBLO	RWY 6R
3000	3000	2700	1.5 NM to RWY 6R
GP 3.00°			
TCH 53			
	4.3 NM	6 NM	3.6 NM
CATEGORY	A	B	C
LPV DA		1259-3/4	250 (300-3/4)
LNAV/ VNAV DA		1496-13/4	487 (500-13/4)
LNAV MDA	1520-1	511 (600-1)	1520-1 1/2
			511 (600-1 1/2)
CIRCLING	1580-1	571 (600-1)	1580-1 1/2
			571 (600-1 1/2)
			1640-2
			631 (700-2)



HIRL all Rwws  
TDZ/CL Rwy 6L  
REIL Rwws 6R and 36

EC-2, 13 JUN 2024 to 11 JUL 2024

EC-2, 13 JUN 2024 to 11 JUL 2024