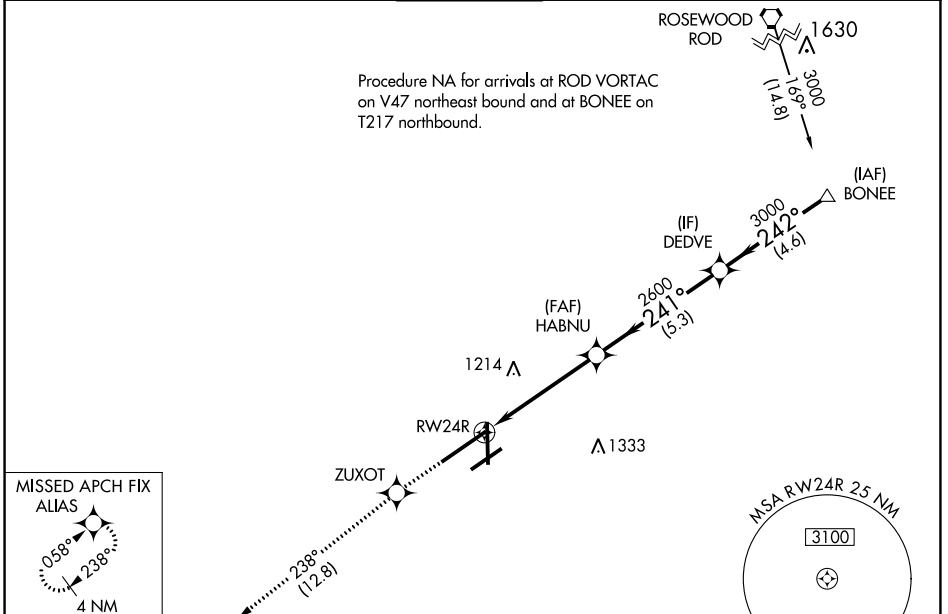


WAAS CH 66013 W24B	APP CRS 241°	Rwy Idg 10900 TDZE 997 Apt Elev 1009
----------------------------------------	------------------------	-----------------------------------------------------------------

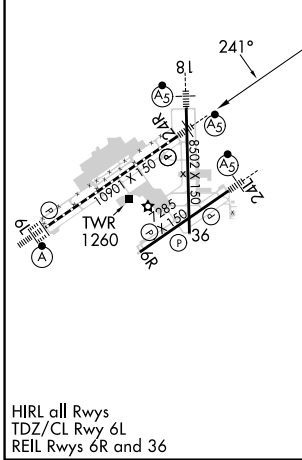
RNAV (GPS) Z RWY 24R

JAMES M COX DAYTON INTL (DAY)

RNP APCH.		For uncompensated Baro-VNAV systems, LNAV/VNAV NA below -19°C or above 54°C. Simultaneous approach authorized. LNAV procedure NA during simultaneous operations. Use of FD or AP required during simultaneous operations. For inop ALS, increase LNAV/VNAV all Cats visibility to RVR 4500.		MALSR 	MISSED APPROACH: Climb to 3000 direct ZUXOT and on track 238° to ALIAS and hold.
ATIS 125.8	COLUMBUS APP CON 134.45 323.15	DAYTON TOWER 119.9 257.7	GND CON 121.9	CLNC DEL 121.75	



ELEV 1009	D	TDZE 997
-----------	----------	----------



3000	ZUXOT	tr 238°	ALIAS				
	HABNU	2600	DEDVE	BONEE			
*LNAV only.		*1.2 NM to RWY 24R	2600	242°	3000	GP 3.00° TCH 55	
1.2 NM		3.7 NM	5.3 NM	4.6 NM			
CATEGORY	A	B	C	D			
LPV DA		1203/24	206 (200-½)				
LNAV/VNAV DA		1294/24	297 (300-½)				
LNAV MDA	1440/24	443 (500-½)	1440/45	443 (500-¾)			
C CIRCLING	1580-1	571 (600-1)	1580-1½ 571 (600-1½)	1640-2 631 (700-2)			

EC-2, 13 JUN 2024 to 11 JUL 2024

EC-2, 13 JUN 2024 to 11 JUL 2024