

LOC I-DFL **110.3**
 APCH CRS **128°**

Rwy Idg **8852 8316 6571**
 TDZE **1082 1078 1077**
 Arprt Elev **1082**

AL-111 [USAF]

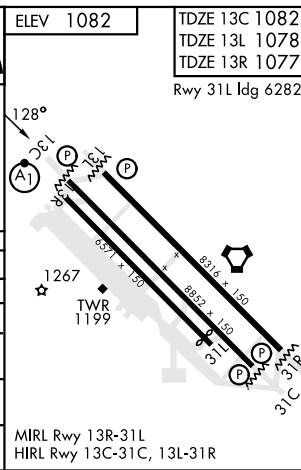
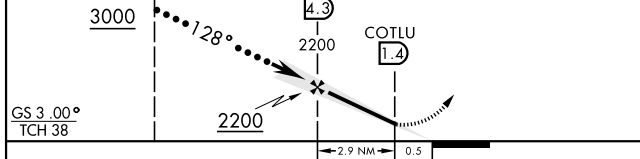
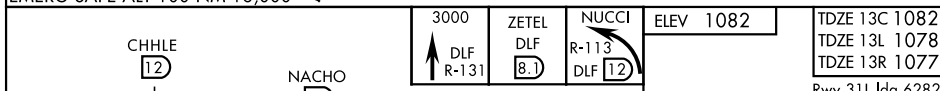
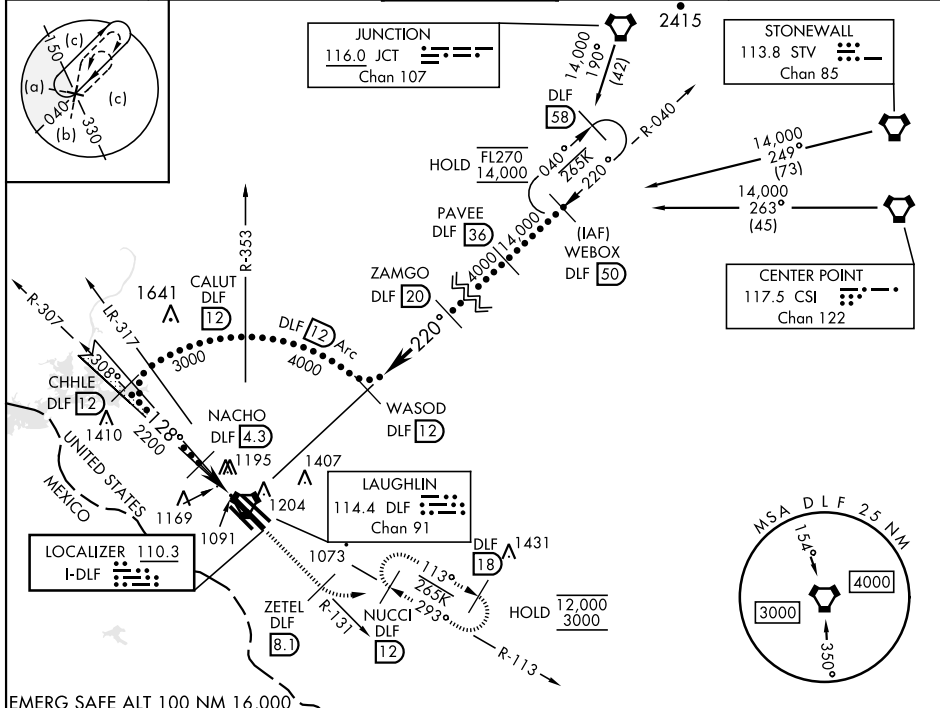
LAUGHLIN AFB (KDLF)

▽ * When ALS inop, increase RVR to 40 and vis to 3/4 mile.
 ** When ALS inop, increase CAT AB RVR to 55 and vis to 1 mile, CAT CDE RVR to 50 and vis to 1 mile.
 *** Circling W of Rwy 13R-31L not authorized.



MISSED APPROACH: Climb to 3000 on DLF VORTAC R-131 to 8.1 DME (ZETEL), then turn left to intercept DLF R-113 to 12 DME (NUCCI) and hold.

ATIS * 114.4 269.9	DEL RIO APP CON 119.6 259.1	TOWER * 125.2 307.375	GND CON 275.8	CLNC DEL 120.5 335.8
-------------------------------------	---------------------------------------	--	-------------------------	--------------------------------



CATEGORY	A	B	C	D	E
S-ILS 13C *	1282/24		200	(200-1/2)	
S-LOC 13C **	1420/24	338 (400-1/2)	1420/26	338	(400-1/2)
SIDESTEP 13L	1440-1	362 (400-1)	1440-1 1/2 362 (400-1 1/2)	1440-2	362 (400-2)
SIDESTEP 13R	1480-1	403 (400-1)	1480-1 1/2 403 (400-1 1/2)	1480-2	403 (400-2)
CIRCLING ***	1500-1 418 (500-1)	1540-1 458 (500-1)	1700-1 1/2 618(700-1 1/2)	1700-2 618 (700-2)	1740-2 1/4 658(700-2 1/4)

SC-3, 13 JUN 2024 to 11 JUL 2024

SC-3, 13 JUN 2024 to 11 JUL 2024