

DEL RIO, TEXAS

ILS or LOC/DME Y RWY 13C

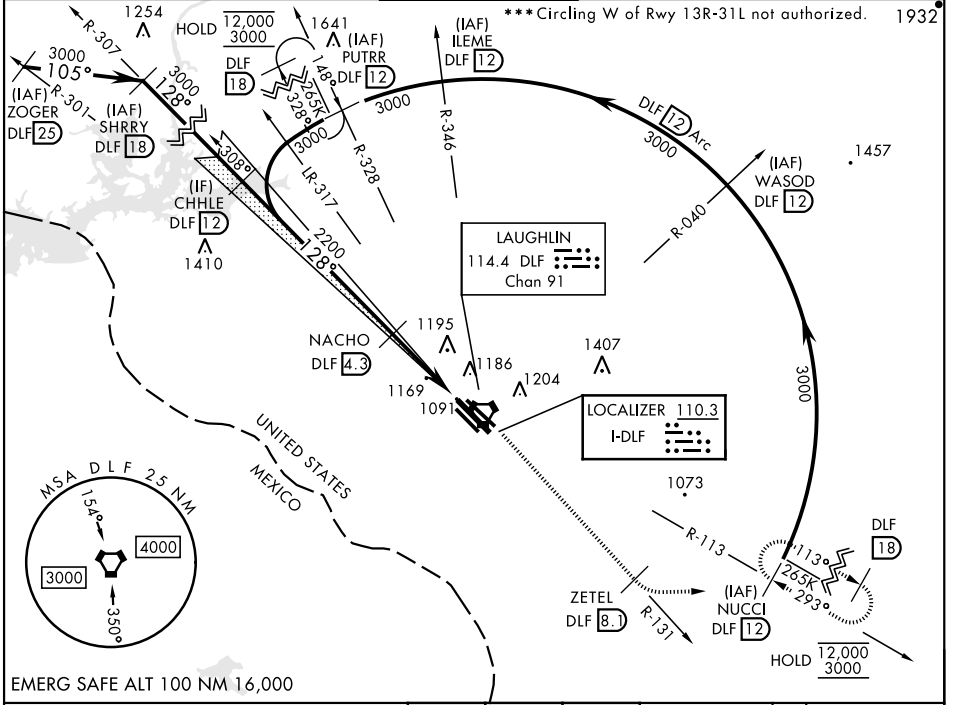
LOC I-DLF 110.3	APCH CRS 128°	Rwy Idg 8852 8316 6571	13C 1082	13L 1078	13R 1077
		TDZE 1082	Arprt Elev 1082		

AL-111 (USAF) LAUGHLIN AFB (KDLF)

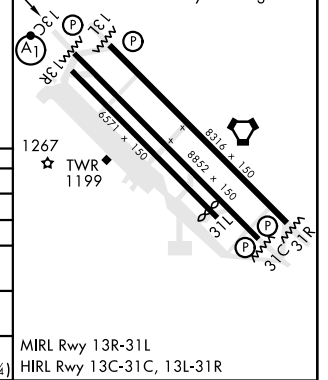
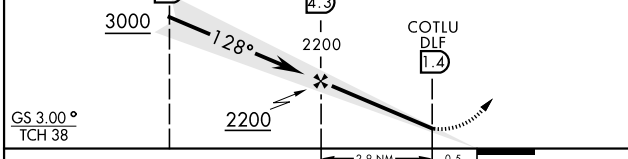
▼ * When ALS inop, increase RVR to 40 and vis to 3/4 mile.
 ** When ALS inop, increase CAT AB RVR to 55 and vis to 1 mile, CAT CDE RVR to 50 and vis to 1 mile.

ALSF-1 (A1) MISSED APPROACH: Climb to 3000 on DLF VORTAC R-131 to 8.1 DME (ZETEL), then turn left to intercept DLF R-113 to 12 DME (NUCCI) and hold.

ATIS ★ 114.4 269.9	DEL RIO APP CON 119.6 259.1	TOWER ★ 125.2 307.375	GND CON 275.8	CLNC DEL 120.5 335.8
------------------------------	---------------------------------------	---------------------------------	-------------------------	--------------------------------



CHHLE DLF 12	NACHO DLF 4.3	COTLU DLF 1.4	ZETEL DLF 8.1	NUCCI R-113 DLF 12	ELEV 1082	TDZE 13C 1082	TDZE 13L 1078	TDZE 13R 1077
						Rwy 31L Idg 6282'		



CATEGORY	A	B	C	D	E
S-ILS 13C*	1282/24		200	(200-1/2)	
S-LOC 13C**	1420/24	338 (400-1/2)	1420/26	338	(400-1/2)
SIDESTEP 13L	1440-1 362 (400-1)	1440-1 1/2 362(400-1 1/2)	1440-2 362 (400-2)		
SIDESTEP 13R	1480-1 403 (400-1)	1480-1 1/2 403(400-1 1/2)	1480-2 403 (400-2)		
CIRCLING ***	1500-1 418 (500-1)	1540-1 458 (500-1)	1700-1 3/4 618(700-1 3/4)	1700-2 618 (700-2)	1740-2 1/4 658 (700-2 1/4)

MIRL Rwy 13R-31L
 HIRL Rwy 13C-31C, 13L-31R

DEL RIO, TEXAS

29°22'N-100°47'W

LAUGHLIN AFB (KDLF)

Amdt 6 05OCT23

ILS or LOC/DME Y RWY 13C

SC-3, 13 JUN 2024 to 11 JUL 2024

SC-3, 13 JUN 2024 to 11 JUL 2024