

DEL RIO, TEXAS

# RNAV (GPS) B

APCH CRS <b>340°</b>	Rwy Idg TDZE Arprt Elev	N/A N/A <b>1082</b>
-------------------------	-------------------------------	---------------------------

AL-111 (USAF)

LAUGHLIN AFB (KDLF)

RNP APCH - GPS	MISSED APPROACH: Climbing left turn to 4000 direct ZOBUS, cross SCIFI at 4000, expect radar vectors.
RADAR required	

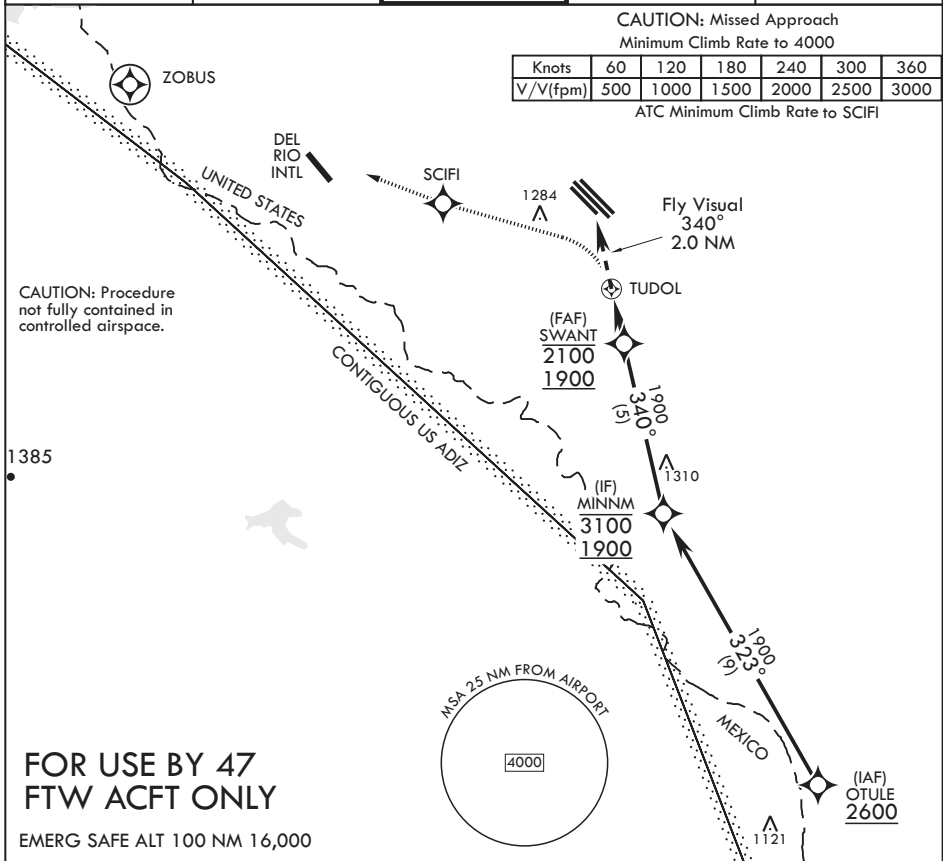
⚠ \* Circling not authorized in sector NE of Rwy 13R-31L.

ATIS ★ <b>114.4 269.9</b>	DEL RIO APP CON <b>119.6 259.1</b>	TOWER ★ <b>125.2 307.375</b>	GND CON <b>275.8</b>	CLNC DEL <b>120.5 335.8</b>
------------------------------	---------------------------------------	---------------------------------	-------------------------	--------------------------------

CAUTION: Missed Approach  
Minimum Climb Rate to 4000

Knots	60	120	180	240	300	360
V/V(fpm)	500	1000	1500	2000	2500	3000

ATC Minimum Climb Rate to SCIFI

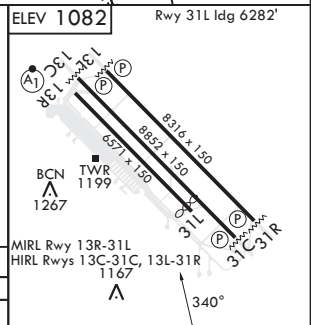
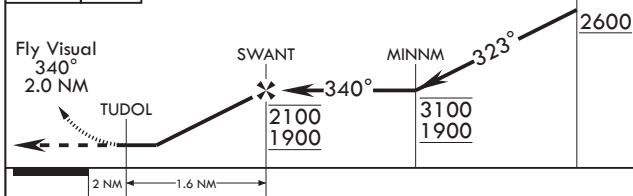


CAUTION: Procedure not fully contained in controlled airspace.

## FOR USE BY 47 FTW ACFT ONLY

EMERG SAFE ALT 100 NM 16,000

4000	SCIFI	ELEV 1082	Rwy 31L Idg 6282'
------	-------	-----------	-------------------



CATEGORY	A	B	C	D
Ⓢ CIRCULING*	1600-3	518	(1000-3)	NA

DEL RIO, TEXAS

29°22'N - 100°47'W

LAUGHLIN AFB (KDLF)

Amdt 6 07SEP23

# RNAV (GPS) B

SC-3, 13 JUN 2024 to 11 JUL 2024

SC-3, 13 JUN 2024 to 11 JUL 2024