

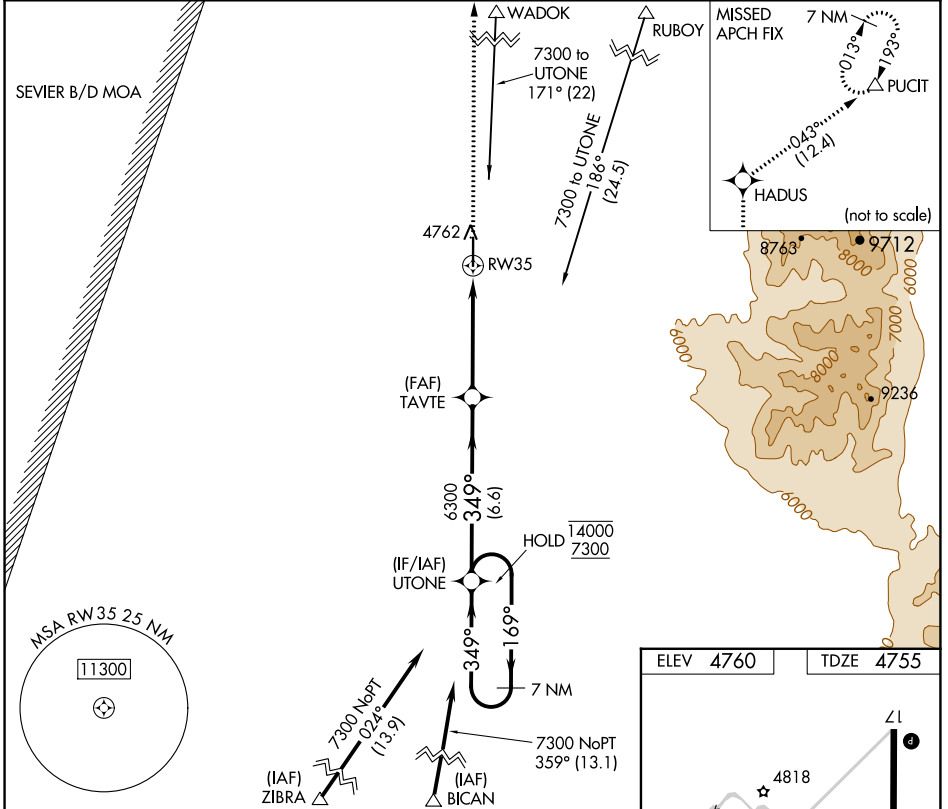
WAAS CH <b>61124</b> <b>W35A</b>	APP CRS <b>349°</b>	Rwy Idg TDZE Apt Elev	<b>6065</b> <b>4755</b> <b>4760</b>
--	------------------------	-----------------------------	---

# RNAV (GPS) RWY 35

DELTA MUNI (DTA)

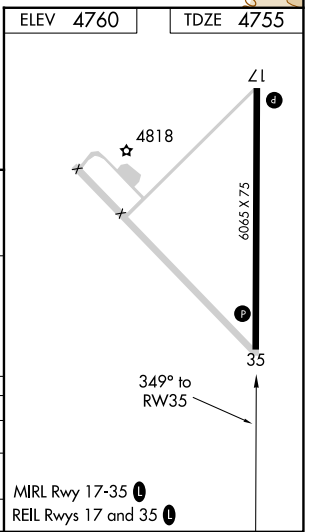
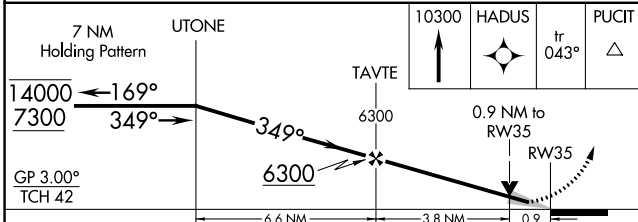
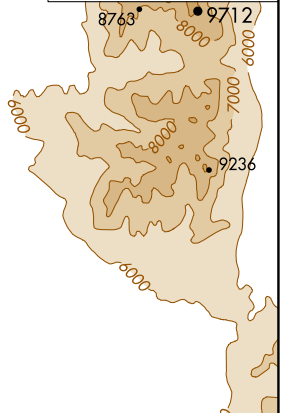
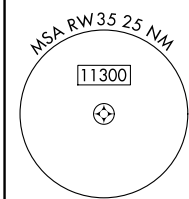
RNP APCH-GPS.	MISSED APPROACH: Climb to 10300 direct HADUS and on track 043° to PUCIT and hold.
▼ For uncompensated Baro-VNAV systems, LNAV/VNAV NA below -24°C or above 54°C.	

AWOS-3 <b>127.75</b>	SALT LAKE CENTER <b>127.825 239.025</b>	UNICOM <b>122.8 (CTAF) 0</b>
-------------------------	--	---------------------------------



SW-4, 13 JUN 2024 to 11 JUL 2024

SW-4, 13 JUN 2024 to 11 JUL 2024



7 NM Holding Pattern	UTONE	TAVTE	10300	HADUS	PUCIT
14000 ← 169°	7300 → 349°	6300	↑	☉	△
GP 3.00°				0.9 NM to RW35	
	6.6 NM	3.8 NM		0.9	
CATEGORY	A	B	C	D	
LPV DA		4955-1	200 (200-1)		
LNAV/VNAV DA		5005-1	250 (300-1)		
LNAV MDA		5080-1	325 (400-1)		

MIRL Rwy 17-35 0  
REIL Rwy 17 and 35 0