

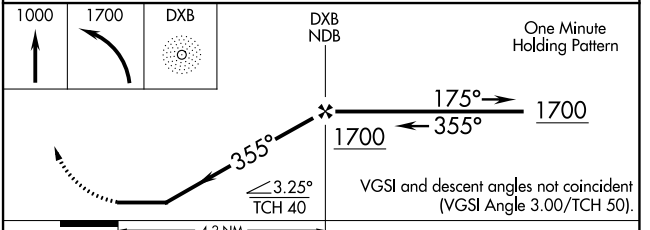
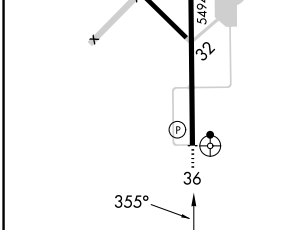
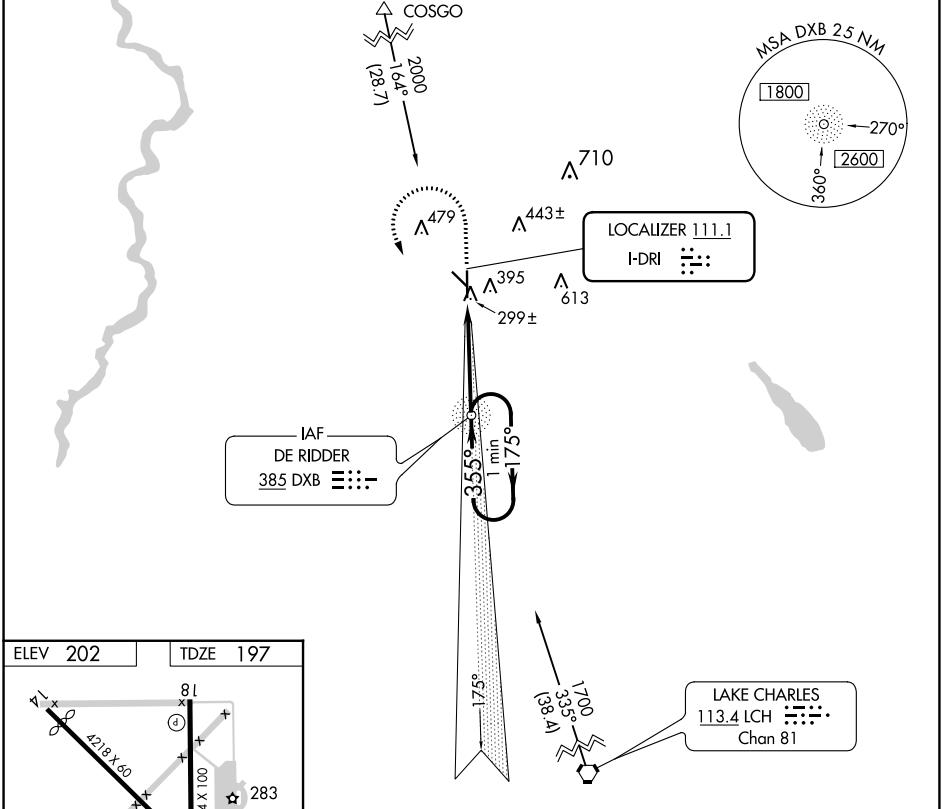
LOC I-DRI <b>111.1</b>	APP CRS <b>355°</b>	Rwy Idg TDZE Apt Elev	<b>5494</b> <b>197</b> <b>202</b>
---------------------------	------------------------	-----------------------------	---

**LOC RWY 36**  
BEAUREGARD RGNL (DRI)

**NA** Inoperative table does not apply. ADF required. Visibility reduction by helicopters NA. When local altimeter setting not received, use Fort Polk altimeter setting and increase all MDAs 60 feet and S-36 visibility Cat C ½ SM and Circling Cats C/D visibility ¼ SM.

**ODALS**  
MISSED APPROACH: Climb to 1000 then climbing left turn to 1700 direct DXB NDB and hold.

AWOS-3PT <b>118.225</b>	POLK APP CON <b>123.7 261.3</b>	UNICOM <b>122.8 (CTAF)</b>
----------------------------	------------------------------------	-------------------------------



ELEV 202	TDZE 197
REIL Rwy 18 MIRL Rwy 18-36	
FAF to MAP 4.2 NM	
Knots	60 90 120 150 180
Min:Sec	4:12 2:48 2:06 1:41 1:24

CATEGORY	A	B	C	D
S-36	560-1 363 (400-1)			560-1¼ 363 (400-1¼)
CIRCLING	720-1 518 (600-1)		780-1½ 578 (600-1½)	1000-2½ 798 (800-2½)

SC-4, 13 JUN 2024 to 11 JUL 2024

SC-4, 13 JUN 2024 to 11 JUL 2024